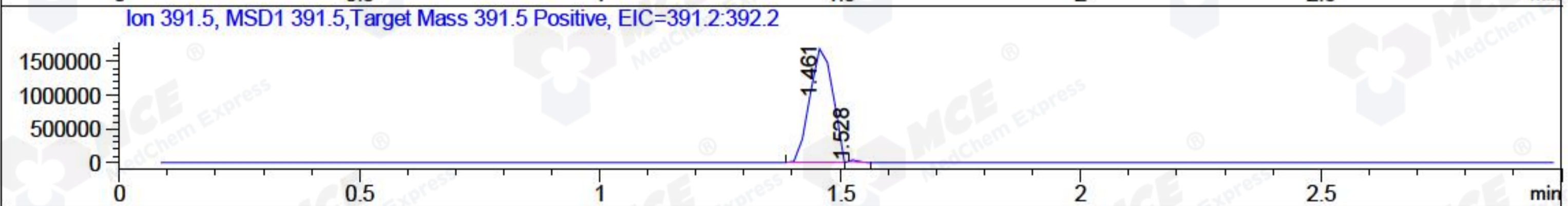
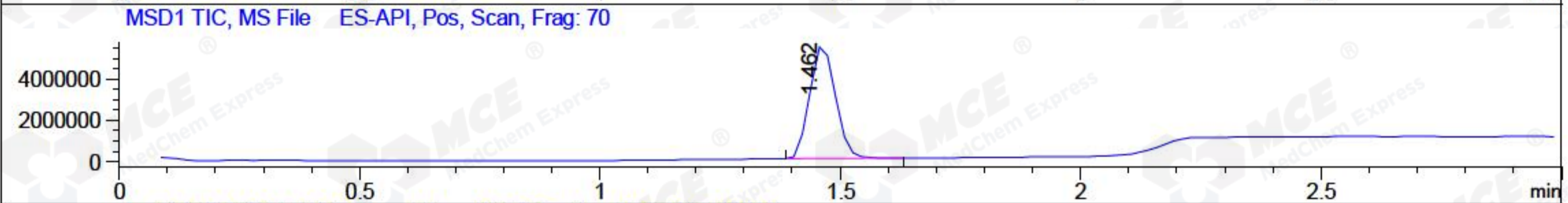
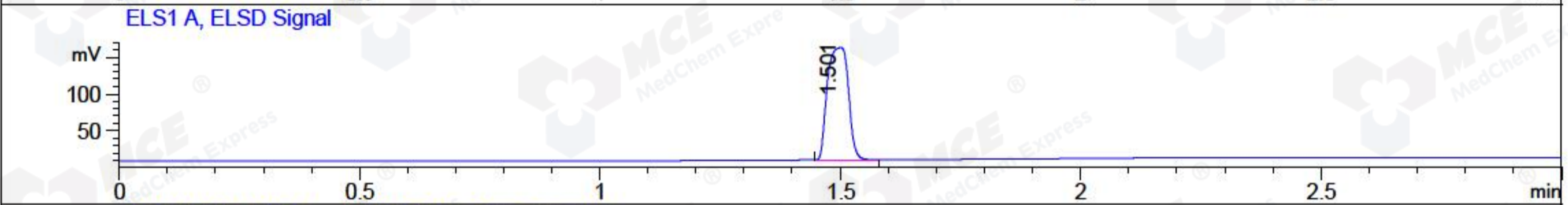
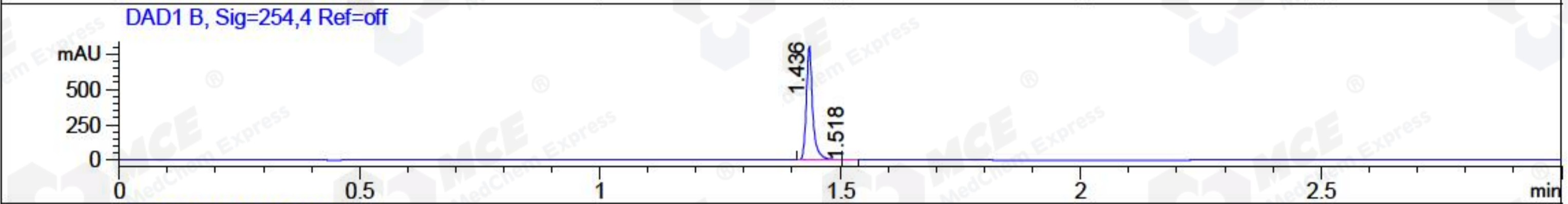
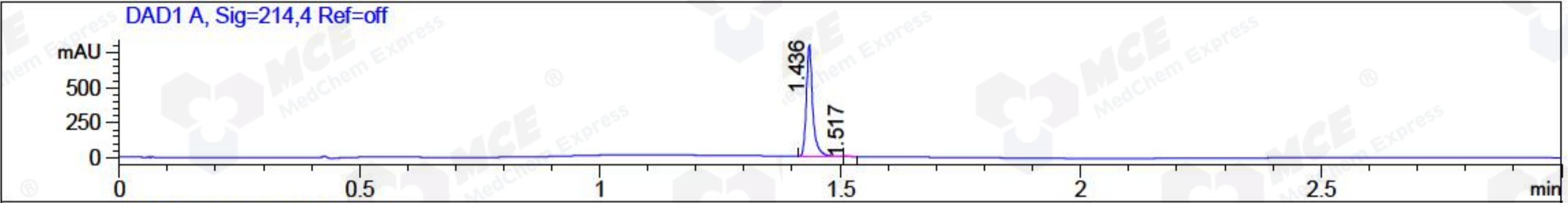


File ..ata\20170925\20170925 1\CPK2017-925-09317.D Tgt Mass (CHM):
 Injection Date : 25 Sep 17 7:48 pm +0800 Seq. Line : 121
 Sample Name : CPK2017-925-09317 Location : P2-C-02
 Acq. Operator : SYSTEM Inj : 1
 Spec. Reported : MS Integration Inj Volume : 1 ul
 Acq. Method : D:\LCMS03\Data\20170925\20170925 1\1-POS-3MIN.M
 Analysis Method : D:\LCMS03\Data\20170925\20170925 1\1-POS-3MIN.M
 Catalog No : HY-50876 Batch#09317
 Method Info : Mobile Phase: A: water(0.01%TFA) B:ACN(0.01%TFA)
 Gradient: 5% to 95%B within 1.3 min
 Flow Rate : 1.8ml/min
 Column :SunFire C18, 4.6*50mm,3.5um A-RP-186
 Oven Temperature : 45C



Integration Results for DAD1 A, Sig=214,4 Ref=off

RetTim	Width	Area	Height	Area%	MS (+)
1.44	0.01	736.48	789.79	99.91	197
1.52	0.01	0.69	0.85	0.09	197

Integration Results for DAD1 B, Sig=254,4 Ref=off

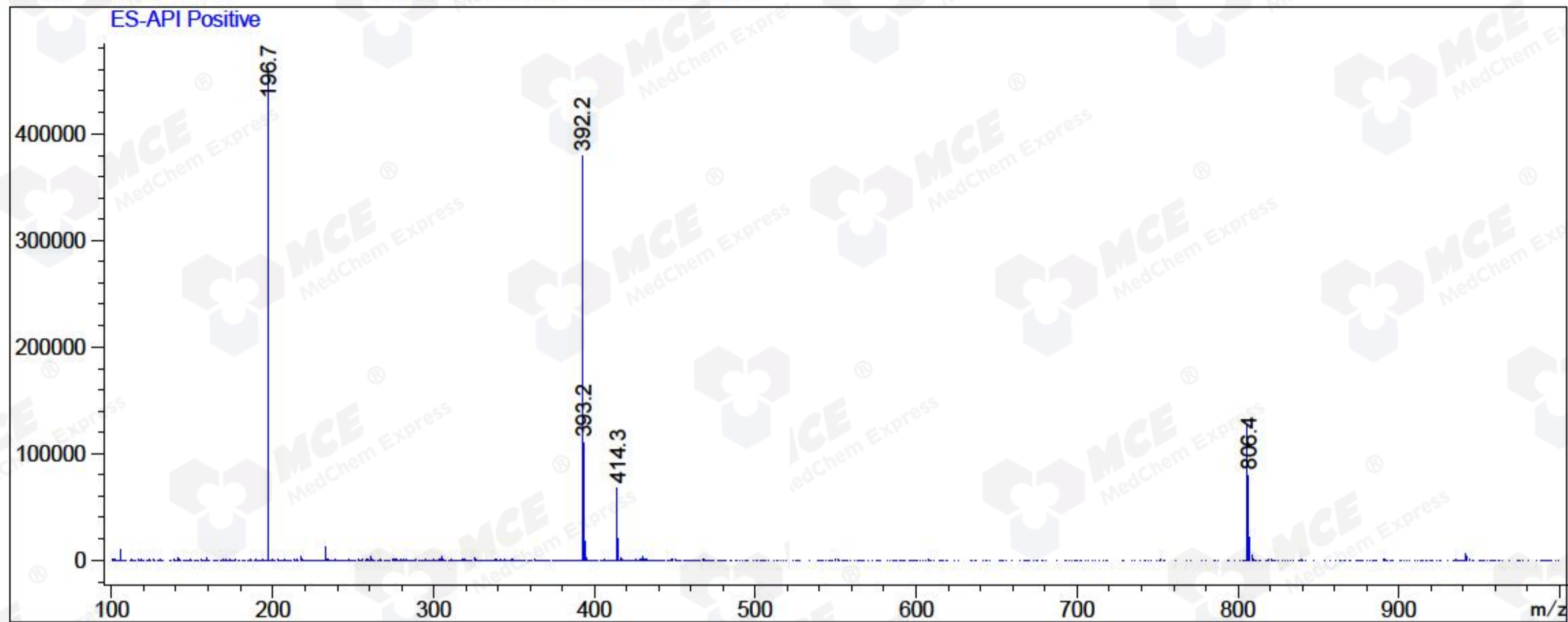
RetTim	Width	Area	Height	Area%	MS (+)
1.44	0.01	742.43	798.94	99.90	197
1.52	0.01	0.71	0.86	0.10	197

Integration Results for MSD1 TIC, MS File

RetTim	Width	Area	Height	Area%	MS (+)
1.46	0.06	20519766.00	5500059.50	100.00	197

Ret. Time: 1.46

<<<< POSITIVE SPECTRA >>>>



*** End of Report ***