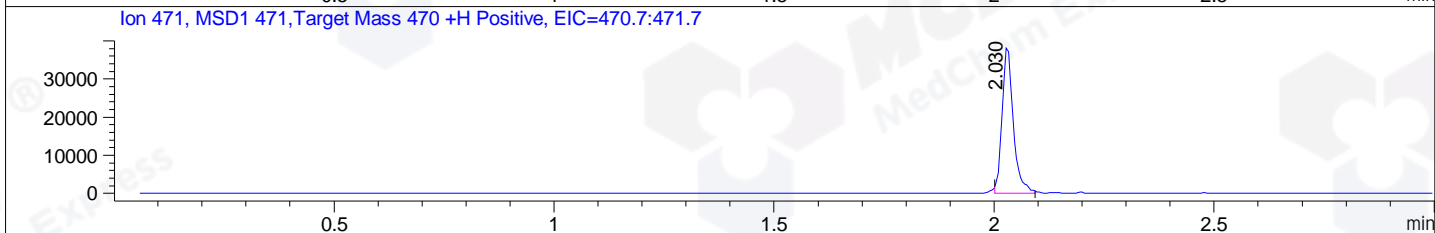
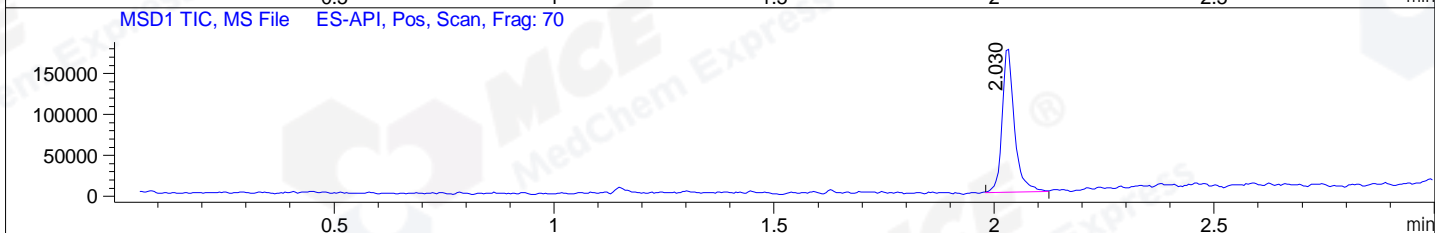
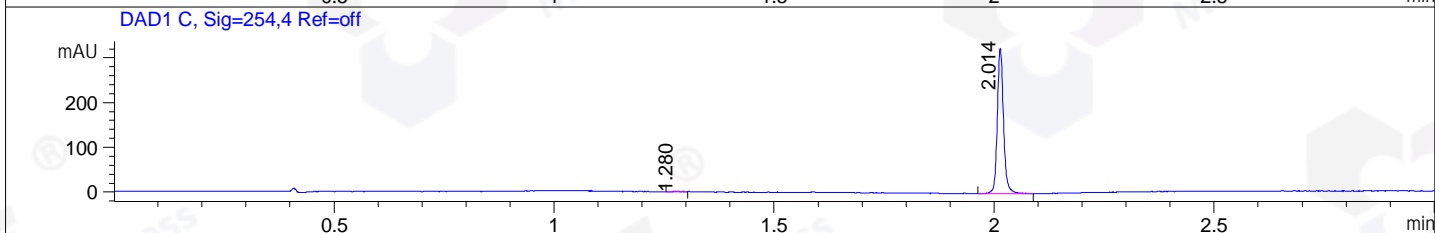
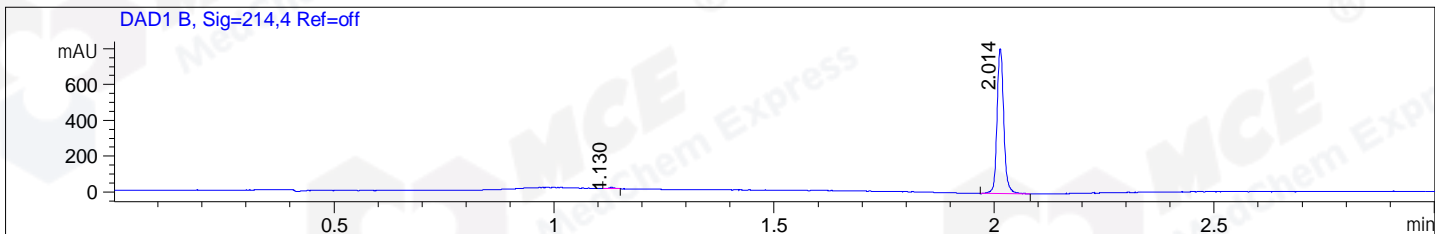


File ..\DATA\2020\20200807\1065\BIZ2020-805-WLQ3.D Tgt Mass (CHM):  
Injection Date : 7 Aug 20 9:05 am +0800 Seq. Line : 5  
Sample Name : BIZ2020-805-WLQ3 Location : P1-C-08  
Acq. Operator : zyj\_1547 Inj : 1  
Spec. Reported : MS Integration Inj Volume : 1 ul  
Acq. Method : D:\Chem32\1\data\2020\20200807\1065\1-POS-3MIN.M  
Analysis Method : D:\CHEM32\1\DATA\2020\20200807\1065\1-POS-3MIN.M  
Catalog No : HY-50882  
Method Info : Mobile Phase: A: water(0.01%TFA) B:ACN(0.01%TFA)  
Gradient: 5% to 95%B within 1.3 min  
Flow Rate :1.8ml/min  
Column :SunFire C18, 4.6\*50mm,3.5um A-RP-607  
Oven Temperature : 45C



Integration Results for DAD1 B, Sig=214,4 Ref=off

| RetTim | Width | Area   | Height | Area% | MS (+) |
|--------|-------|--------|--------|-------|--------|
| 1.13   | 0.01  | 5.79   | 6.52   | 0.67  | ND     |
| 2.01   | 0.02  | 863.56 | 810.66 | 99.33 | 473    |

Integration Results for DAD1 C, Sig=254,4 Ref=off

| RetTim | Width | Area   | Height | Area% | MS (+) |
|--------|-------|--------|--------|-------|--------|
| 1.28   | 0.02  | 1.31   | 1.14   | 0.41  | ND     |
| 2.01   | 0.02  | 319.02 | 325.39 | 99.59 | 473    |

Integration Results for MSD1 TIC, MS File

| RetTim | Width | Area      | Height    | Area%  | MS (+) |
|--------|-------|-----------|-----------|--------|--------|
| 2.03   | 0.03  | 338170.84 | 177892.23 | 100.00 | 473    |

Ret. Time: 2.03

<<<< POSITIVE SPECTRA >>>>

ES-API Positive

