

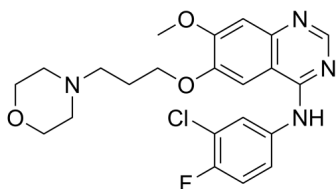
## Gefitinib

Cat. No.: HY-50895  
Batch No.: 160485  
CAS No.: 184475-35-2  
Molecular Formula: C<sub>22</sub>H<sub>24</sub>ClFN<sub>4</sub>O<sub>3</sub>

### ANALYTICAL DATA

Theoretical: C(59.13%)、H(5.41%)、N(12.54%)  
Result: C(58.88%)、H(5.28%)、N(12.50%)

Chemical Structure:



Caution: Product has not been fully validated for medical applications. For research use only.

Tel: 609-228-6898

Fax: 609-228-5909

E-mail: [tech@MedChemExpress.com](mailto:tech@MedChemExpress.com)

Address: 1 Deer Park Dr, Suite Q, Monmouth Junction, NJ 08852, USA