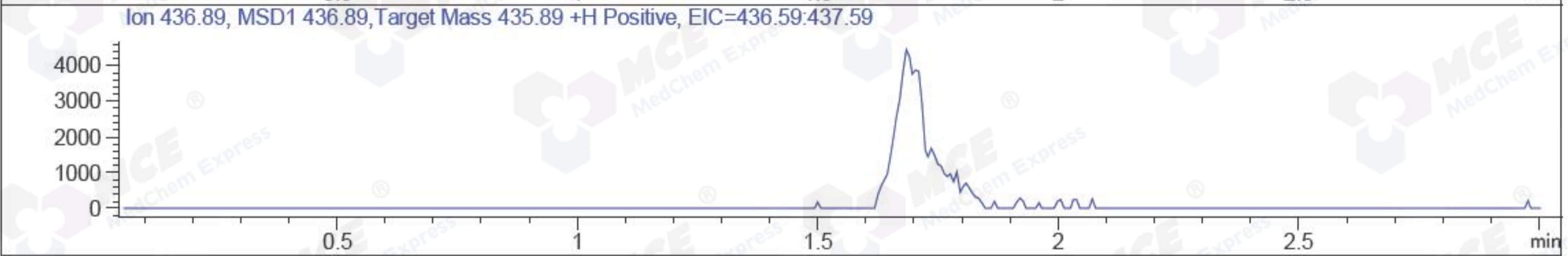
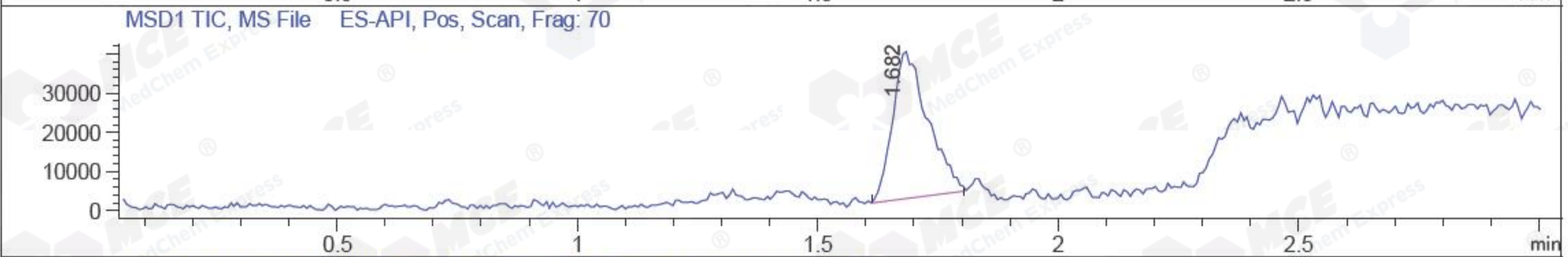
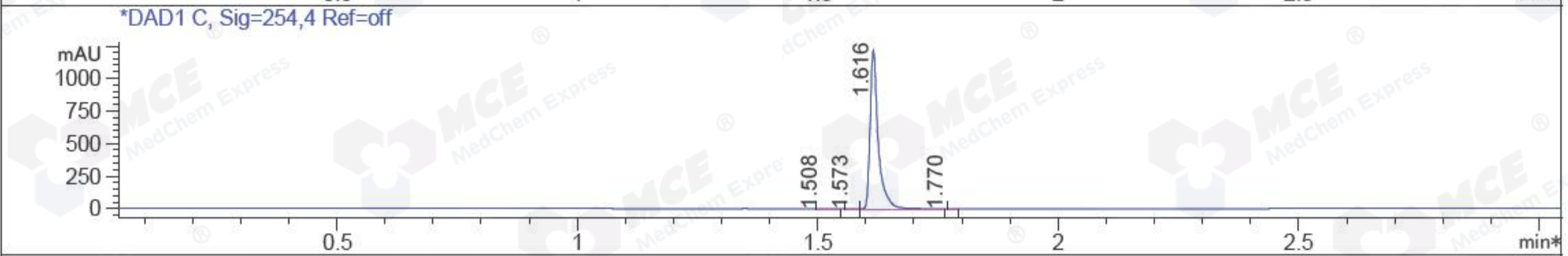
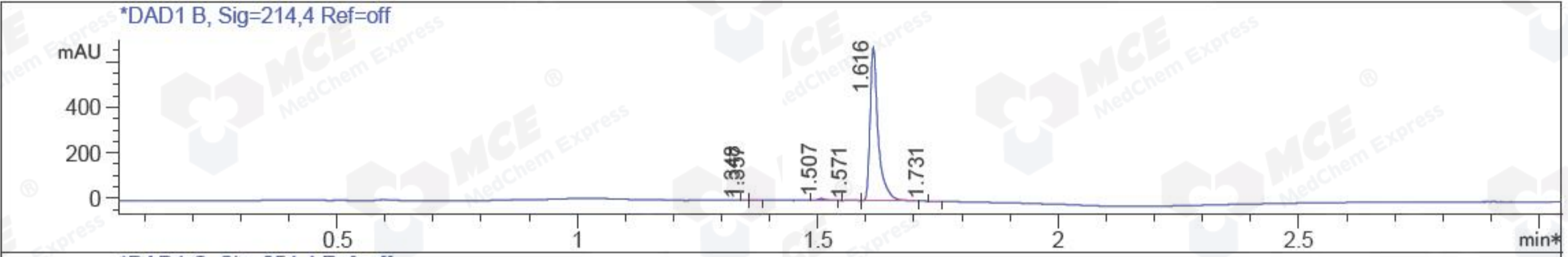


File D:\CHEM32\1\DATA\CPK\CPK2017-307-04896.D Tgt Mass (EZX): 435.89
 Injection Date : 7 Mar 17 2:52 pm +0800 Seq. Line : 0
 Sample Name : CPK2017-307-04896 Location : P1-A-06
 Acq. Operator : GZZ_718 Inj : 1
 Spec. Reported : MS Integration Inj Volume : 1 ul
 Acq. Method : D:\Chem32\1\METHODS\1-POS-3MIN.M
 Analysis Method : D:\CHEM32\1\METHODS\1-POS-3MIN-PROSRSS.M
 Catalog No: HY-50903 Batch#04896 Easy-Access Method: '1-POS-3MIN' 435.89
 Method Info : Mobile Phase: A: water(0.01%TFA) B:ACN(0.01%TFA)
 Gradient: 5% to 95%B within 1.3 min
 Flow Rate :1.8ml/min
 Column :SunFire C18, 4.6*50mm,3.5um A-RP-186
 Oven Temperature : 45C



Integration Results for DAD1 B, Sig=214,4 Ref=off

RetTim	Width	Area	Height	Area%	MS (+)
1.35	0.01	0.31	0.42	0.04	ND
1.36	0.02	0.63	0.36	0.08	ND
1.51	0.02	10.66	8.82	1.32	ND
1.57	0.02	2.02	1.85	0.25	ND
1.62	0.02	794.19	679.88	98.24	436
1.73	0.02	0.65	0.20	0.08	436

Integration Results for DAD1 C, Sig=254,4 Ref=off

RetTim	Width	Area	Height	Area%	MS (+)
1.51	0.02	0.72	0.56	0.05	ND
1.57	0.01	0.46	0.57	0.03	ND
1.62	0.02	1431.29	1229.03	99.91	436
1.77	0.01	0.13	0.04	0.01	436

Ret. Time: 1.68

<<<< POSITIVE SPECTRA >>>>

