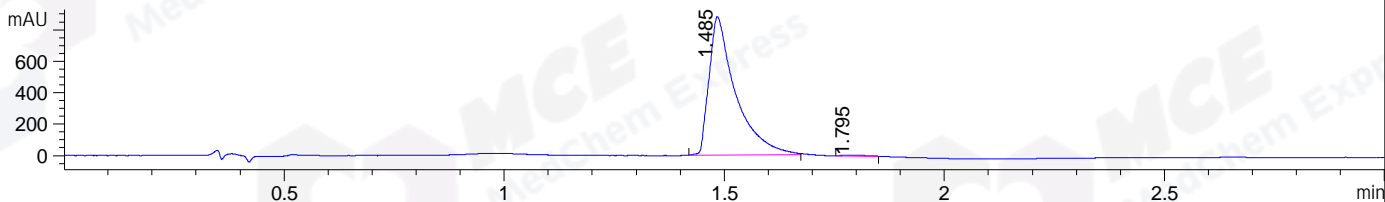
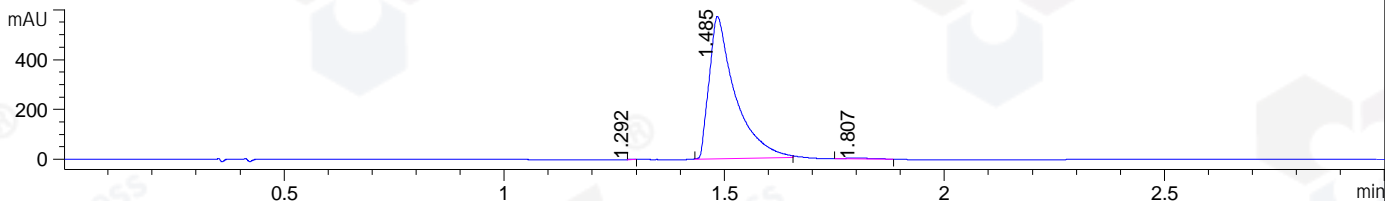


File ..ATA\2019\20190131\557\CPK2019-130-04753-1.D Tgt Mass (CHM):  
 Injection Date : 31 Jan 19 11:43 am +0800 Seq. Line : 17  
 Sample Name : CPK2019-130-04753 Location : P2-C-09  
 Acq. Operator : LQ\_1052 Inj : 1  
 Spec. Reported : MS Integration Inj Volume : 5 ul  
 Acq. Method : D:\Chem32\1\data\2019\20190131\557\1-POS-3MIN-1.M  
 Analysis Method : D:\CHEM32\1\DATA\2019\20190131\557\1-POS-3MIN-1.M  
 Catalog No : HY-50907 Batch#04753  
 Method Info : Mobile Phase: A: water(0.01%TFA) B:ACN(0.01%TFA)  
 Gradient: 5% to 95%B within 1.3 min  
 Flow Rate :1.8ml/min  
 Column :SunFire C18, 4.6\*50mm,3.5um A-RP-314  
 Oven Temperature : 45

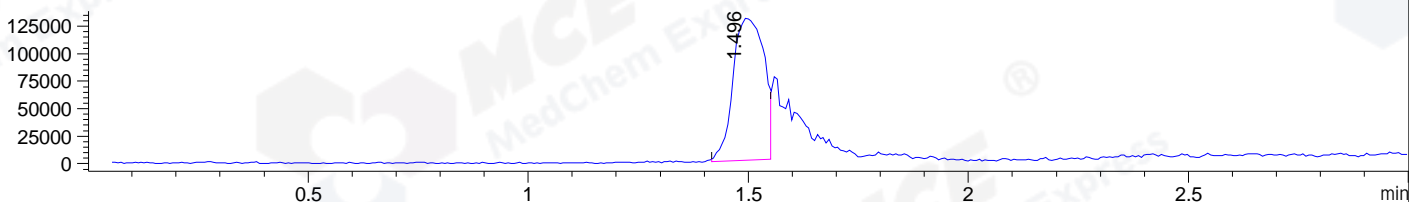
DAD1 B, Sig=214,4 Ref=off



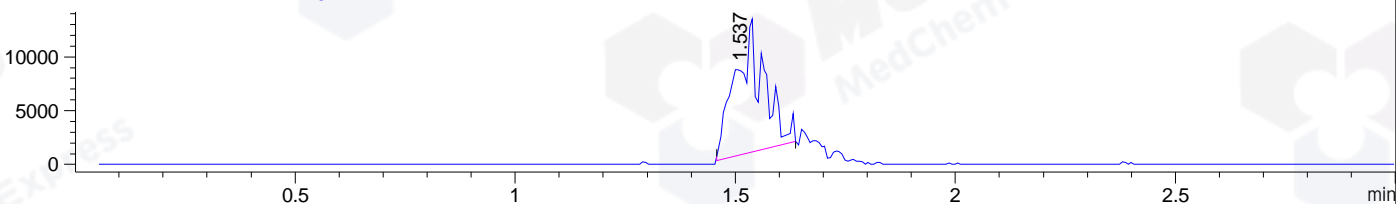
DAD1 C, Sig=254,4 Ref=off



MSD1 TIC, MS File ES-API, Pos, Scan, Frag: 70



Ion 814.4, MSD1 814.4, Target Mass 813.4 +H Positive, EIC=814.1:815.1



## Integration Results for DAD1 B, Sig=214,4 Ref=off

RetTim	Width	Area	Height	Area%	MS (+)
1.48	0.06	3702.40	882.27	99.59	407
1.79	0.06	15.13	4.38	0.41	518

## Integration Results for DAD1 C, Sig=254,4 Ref=off

RetTim	Width	Area	Height	Area%	MS (+)
1.29	0.01	0.50	0.63	0.02	ND
1.48	0.06	2343.14	571.70	99.31	407
1.81	0.07	15.77	3.51	0.67	ND

## Integration Results for MSD1 TIC, MS File

RetTim	Width	Area	Height	Area%	MS (+)
1.50	0.07	628679.31	129555.41	100.00	407

Ret. Time: 1.50

<<<< POSITIVE SPECTRA >>>>

ES-API Positive

