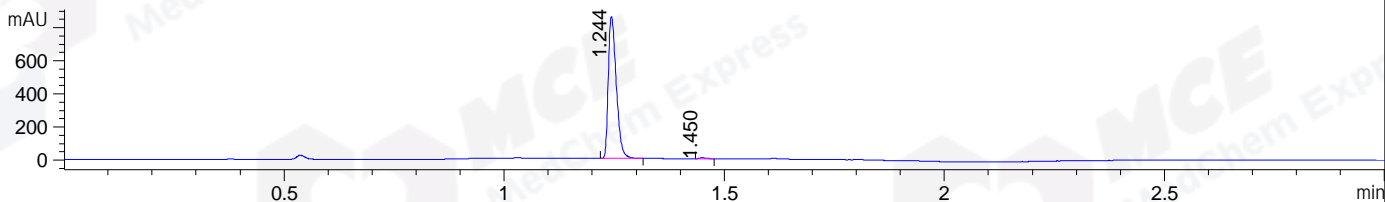
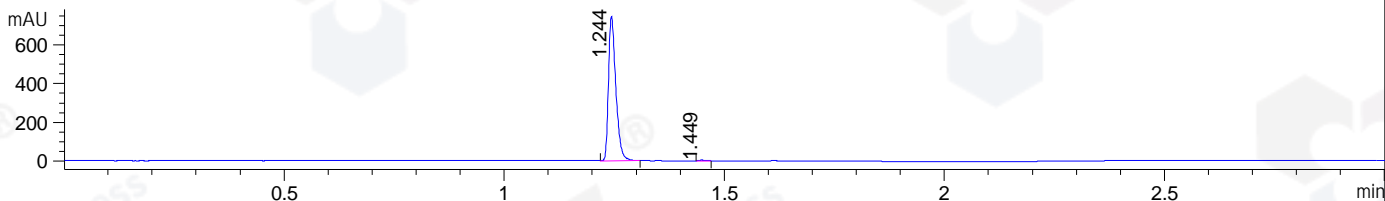


File ..\DATA\2019\20190903\715\CPK2019-902-13611.D Tgt Mass (CHM):
Injection Date : 3 Sep 19 12:11 pm +0800 Seq. Line : 48
Sample Name : CPK2019-902-13611 Location : P1-D-03
Acq. Operator : ZJ_1432 Inj : 1
Spec. Reported : MS Integration Inj Volume : 1 ul
Acq. Method : D:\Chem32\1\data\2019\20190903\715\1-POS-3MIN.M
Analysis Method : D:\CHEM32\1\DATA\2019\20190903\715\1-POS-3MIN.M
catalog No : HY-50934 Batch# 13611
Method Info : Mobile Phase: A: water(0.01%TFA) B:ACN(0.01%TFA)
Gradient: 5% to 95%B within 1.3 min
Flow Rate :1.8ml/min
Column :SunFire C18, 4.6*50mm,3.5um A-RP-433
Oven Temperature : 45

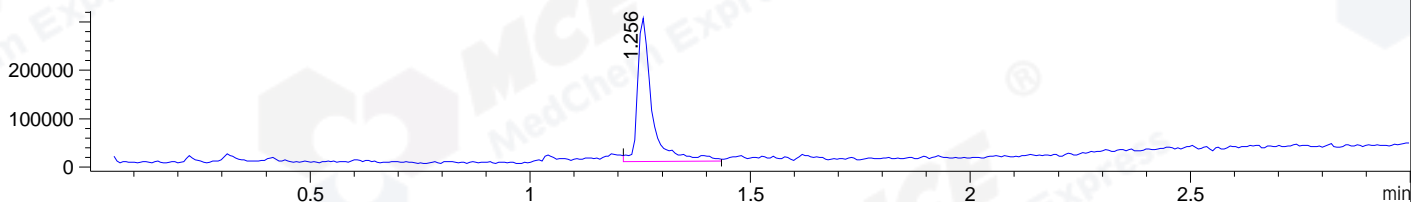
DAD1 B, Sig=214,4 Ref=off



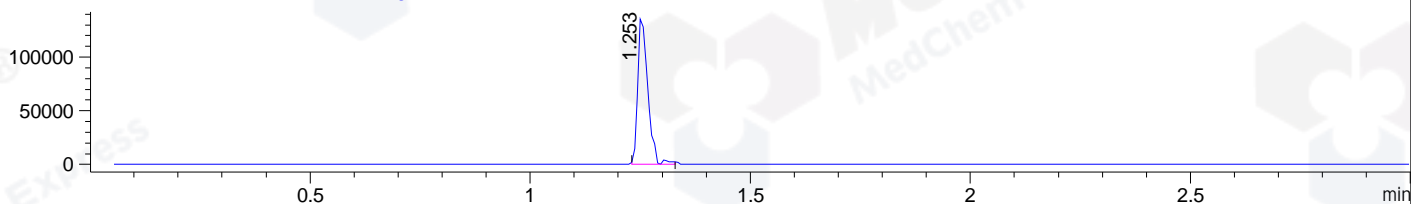
DAD1 C, Sig=254,4 Ref=off



MSD1 TIC, MS File ES-API, Pos, Scan, Frag: 70



Ion 270.3057, MSD1 270.3057, Target Mass 269.3057 +H Positive, EIC=270.01:271.01



Integration Results for DAD1 B, Sig=214,4 Ref=off

RetTim	Width	Area	Height	Area%	MS (+)
1.24	0.02	1081.36	859.05	99.36	270
1.45	0.02	6.95	5.57	0.64	152

Integration Results for DAD1 C, Sig=254,4 Ref=off

RetTim	Width	Area	Height	Area%	MS (+)
1.24	0.02	865.54	748.13	99.51	270
1.45	0.02	4.27	3.96	0.49	152

Integration Results for MSD1 TIC, MS File

RetTim	Width	Area	Height	Area%	MS (+)
1.26	0.03	675244.25	296337.75	100.00	270

Ret. Time: 1.26

<<<< POSITIVE SPECTRA >>>>

ES-API Positive

