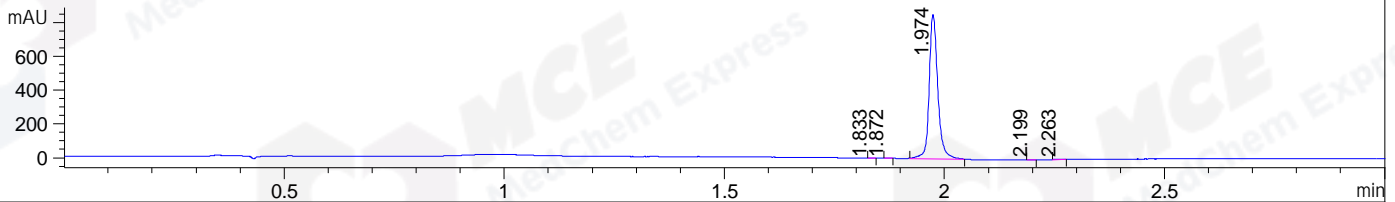


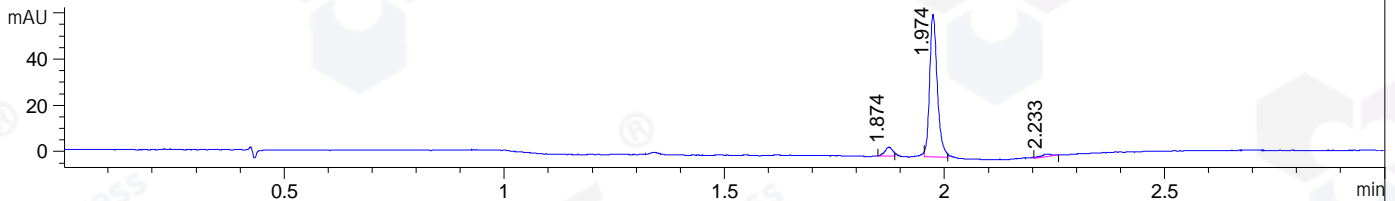
File ..1\DATA\2019\20190222\559\BIZ2019-221-WYQ7.D Tgt Mass (CHM):

Injection Date : 22 Feb 19 12:15 pm +0800 Seq. Line : 37  
 Sample Name : BIZ2019-221-WYQ7 Location : P2-B-05  
 Acq. Operator : LQ\_1052 Inj : 1  
 Spec. Reported : MS Integration Inj Volume : 1 ul  
 Acq. Method : D:\Chem32\1\data\2019\20190222\559\1-POS-3MIN-1.M  
 Analysis Method : D:\CHEM32\1\DATA\2019\20190222\559\1-POS-3MIN-1.M  
 Catalog No : HY-50935 Batch#37691  
 Method Info : Mobile Phase: A: water(0.01%TFA) B:ACN(0.01%TFA)  
 Gradient: 5% to 95%B within 1.3 min  
 Flow Rate :1.8ml/min  
 Column :SunFire C18, 4.6\*50mm,3.5um A-RP-314  
 Oven Temperature : 45□

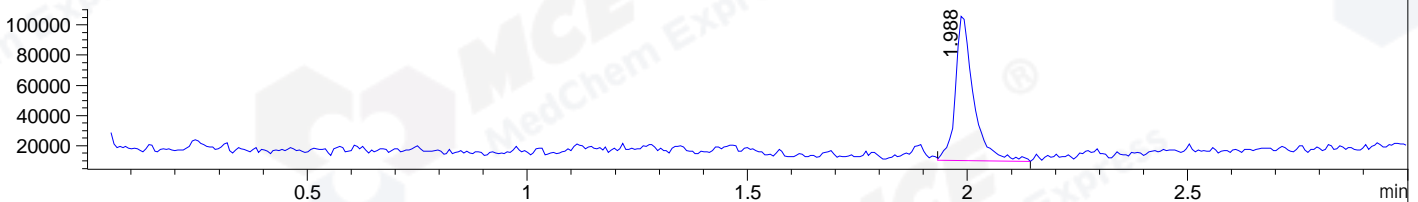
DAD1 B, Sig=214,4 Ref=off



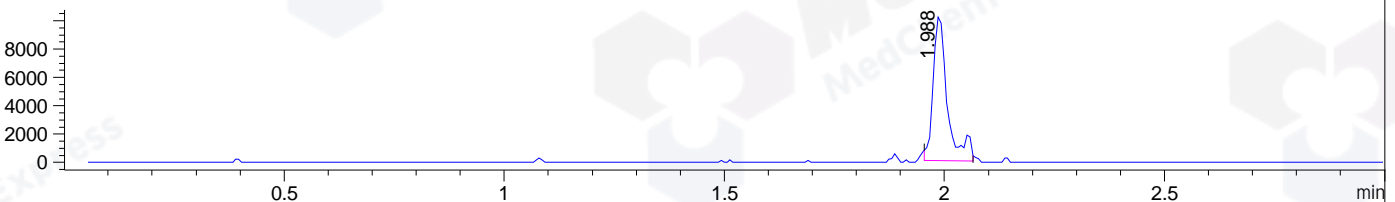
DAD1 C, Sig=254,4 Ref=off



MSD1 TIC, MS File ES-API, Pos, Scan, Frag: 70



Ion 442.6, MSD1 442.6, Target Mass 441.6 +H Positive, EIC=442.3:443.3



## Integration Results for DAD1 B, Sig=214,4 Ref=off

| RetTim | Width | Area    | Height | Area% | MS (+) |
|--------|-------|---------|--------|-------|--------|
| 1.83   | 0.01  | 0.66    | 0.91   | 0.06  | 249    |
| 1.87   | 0.01  | 1.34    | 1.64   | 0.11  | 440    |
| 1.97   | 0.02  | 1169.95 | 854.40 | 99.53 | 442    |
| 2.20   | 0.01  | 0.96    | 1.10   | 0.08  | 142    |
| 2.26   | 0.02  | 2.58    | 2.23   | 0.22  | 142    |

## Integration Results for DAD1 C, Sig=254,4 Ref=off

| RetTim | Width | Area  | Height | Area% | MS (+) |
|--------|-------|-------|--------|-------|--------|
| 1.87   | 0.02  | 4.59  | 3.75   | 5.67  | 440    |
| 1.97   | 0.02  | 74.44 | 61.78  | 91.90 | 442    |
| 2.23   | 0.03  | 1.97  | 1.16   | 2.44  | 142    |

## Integration Results for MSD1 TIC, MS File

| RetTim | Width | Area      | Height   | Area%  | MS (+) |
|--------|-------|-----------|----------|--------|--------|
| 1.99   | 0.04  | 273804.78 | 97323.29 | 100.00 | 442    |

Ret. Time: 1.99

<<<< POSITIVE SPECTRA >>>>

ES-API Positive

