

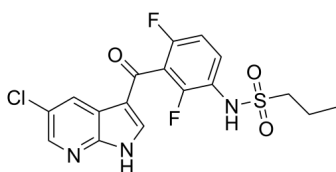
PLX-4720

Cat. No.: HY-51424
Batch No.: 280880
CAS No.: 918505-84-7
Molecular Formula: C₁₇H₁₄ClF₂N₃O₃S

ANALYTICAL DATA

Theoretical: C(46.7%)、H(3.83%)、N(9.61%)
Result: C(46.78%)、H(3.61%)、N(9.665%)

Chemical Structure:



Caution: Product has not been fully validated for medical applications. For research use only.

Tel: 609-228-6898

Fax: 609-228-5909

E-mail: tech@MedChemExpress.com

Address: 1 Deer Park Dr, Suite Q, Monmouth Junction, NJ 08852, USA