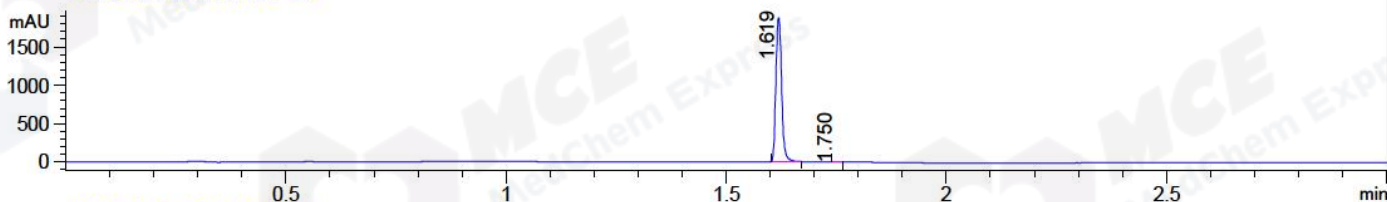


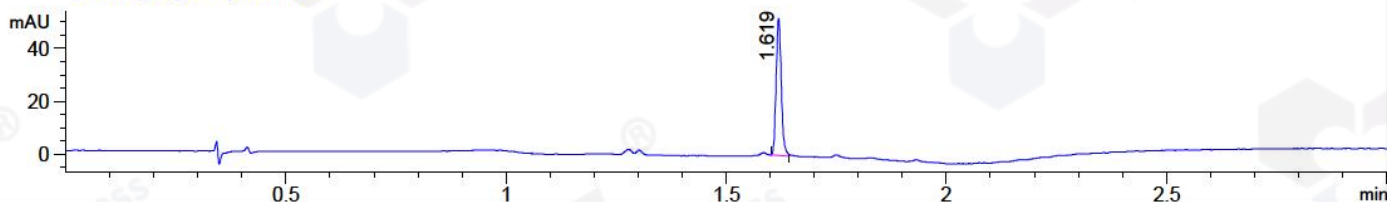
File D:\CHEM32\1\DATA\2018\306\CPK2018-709-01521.D Tgt Mass (CHM):

Injection Date : 10 Jul 18 1:20 pm +0800 Seq. Line : 10  
 Sample Name : CPK2018-709-01521 Location : P1-E-04  
 Acq. Operator : LQ\_1052 Inj : 1  
 Spec. Reported : MS Integration Inj Volume : 1 ul  
 Acq. Method : D:\Chem32\1\data\2018\306\1-POS-3MIN-1.M  
 Analysis Method : D:\CHEM32\1\DATA\2018\306\1-POS-3MIN-1.M  
 Catalog No : HY-70005 Batch#01521 A-RP-314  
 Method Info : Mobile Phase: A: water(0.01%TFA) B:ACN(0.01%TFA)  
 Gradient: 5% to 95%B within 1.3 min  
 Flow Rate :1.8ml/min  
 Column :SunFire C18, 4.6\*50mm,3.5um A-RP-314  
 Oven Temperature : 45□

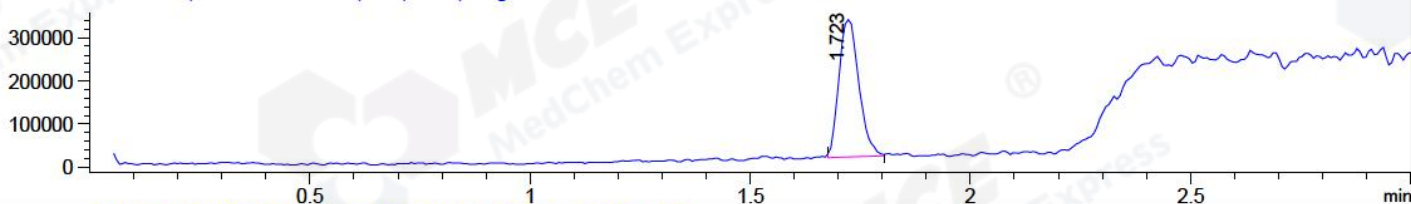
DAD1 B, Sig=214,4 Ref=off



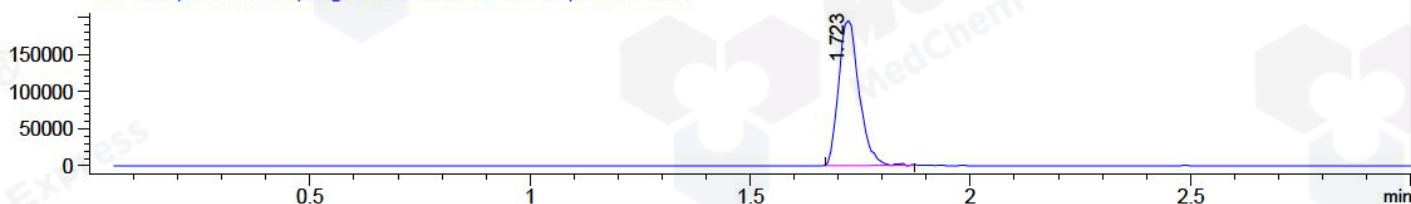
DAD1 C, Sig=254,4 Ref=off



MSD1 TIC, MS File ES-API, Pos, Scan, Frag: 70



Ion 314.3, MSD1 314.3, Target Mass 313.3 +H Positive, EIC=314:315



Integration Results for DAD1 B, Sig=214,4 Ref=off

RetTim	Width	Area	Height	Area%	MS (+)
1.62	0.01	1701.97	1875.83	99.90	235
1.75	0.01	1.64	1.85	0.10	314

Integration Results for DAD1 C, Sig=254,4 Ref=off

RetTim	Width	Area	Height	Area%	MS (+)
1.62	0.01	41.70	51.57	100.00	235

Integration Results for MSD1 TIC, MS File

RetTim	Width	Area	Height	Area%	MS (+)
1.72	0.05	1009325.44	318812.75	100.00	314

Ret. Time: 1.72

<<<< POSITIVE SPECTRA >>>>

