

File ..\Data\20171010\20171010\CPK2017-009-13437.D Tgt Mass (CHM):

Injection Date : 10 Oct 17 4:02 pm +0800 Seq. Line : 84

Sample Name : CPK2017-009-13437 Location : P1-E-01

Acq. Operator : SYSTEM Inj : 1

Spec. Reported : MS Integration Inj Volume : 1.2 ul

Acq. Method : D:\LCMS03\Data\20171010\20171010\1-POS-3MIN.M

Analysis Method : D:\LCMS03\Data\20171010\20171010\1-POS-3MIN.M

Catalog No : HY-70044 Batch#13437

Method Info : Mobile Phase: A: water(0.01%TFA) B:ACN(0.01%TFA)

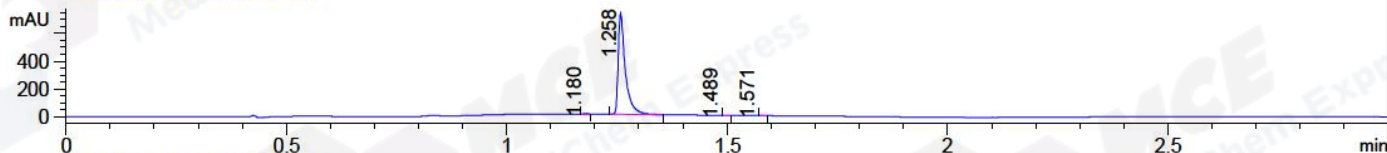
Gradient: 5% to 95%B within 1.3 min

Flow Rate :1.8ml/min

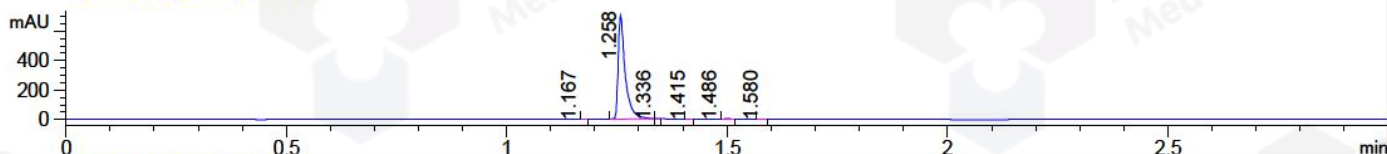
Column :SunFire C18, 4.6*50mm,3.5um A-RP-186

Oven Temperature : 45C

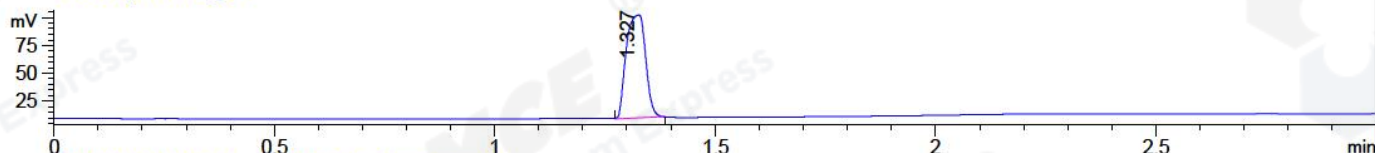
DAD1 A, Sig=214,4 Ref=off



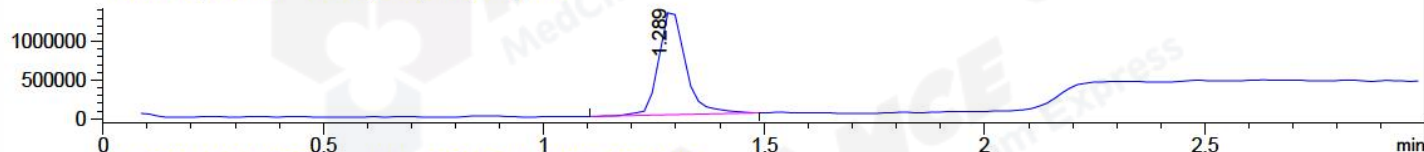
DAD1 B, Sig=254,4 Ref=off



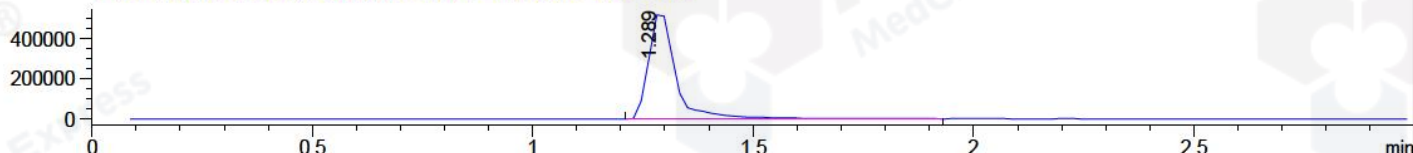
ELS1 A, ELSD Signal



MSD1 TIC, MS File ES-API, Pos, Scan, Frag: 70



Ion 507.6, MSD1 507.6, Target Mass 507.6 Positive, EIC=507.3:508.3



Integration Results for DAD1 A, Sig=214,4 Ref=off

RetTim	Width	Area	Height	Area%	MS (+)
1.18	0.01	3.66	5.20	0.45	114
1.26	0.02	811.79	723.13	99.36	508
1.49	0.01	0.55	0.01	0.07	508
1.57	0.01	1.00	0.47	0.12	130

Integration Results for DAD1 B, Sig=254,4 Ref=off

RetTim	Width	Area	Height	Area%	MS (+)
1.17	0.01	0.69	0.05	0.09	130
1.26	0.02	779.71	700.41	99.55	508
1.34	0.01	0.79	1.78	0.10	508
1.41	0.01	0.19	0.26	0.02	508
1.49	0.02	1.40	0.02	0.18	508
1.58	0.01	0.49	0.72	0.06	130

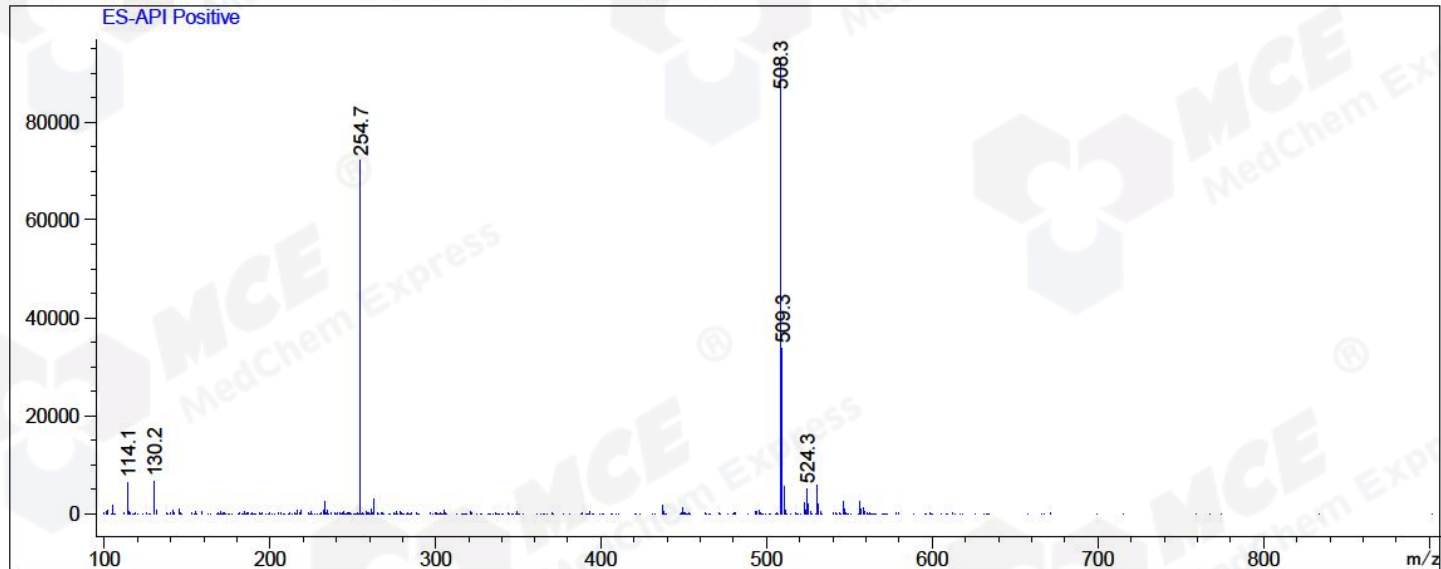
Integration Results for MSD1 TIC, MS File

RetTim	Width	Area	Height	Area%	MS (+)
--------	-------	------	--------	-------	--------

-----|-----|-----|-----|-----|-----|
1.29 0.06 5752108.50 1373282.13 100.00 508

Ret. Time: 1.29

<<<< POSITIVE SPECTRA >>>>



*** End of Report ***