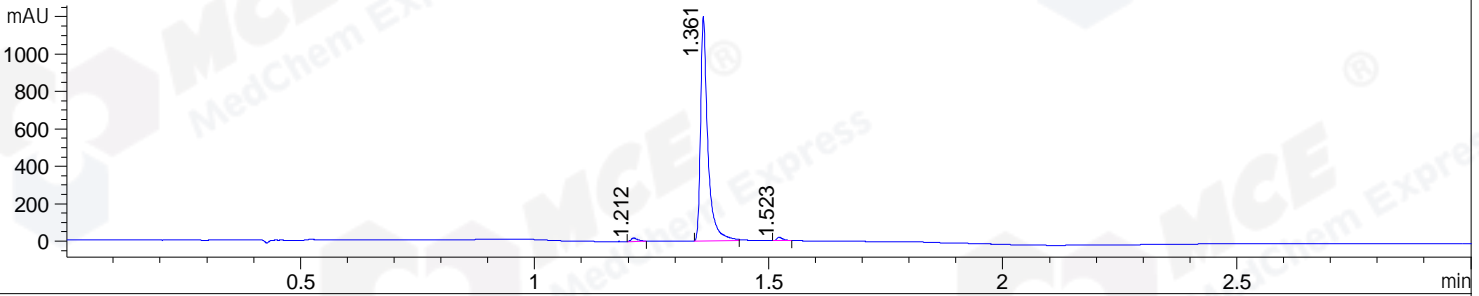
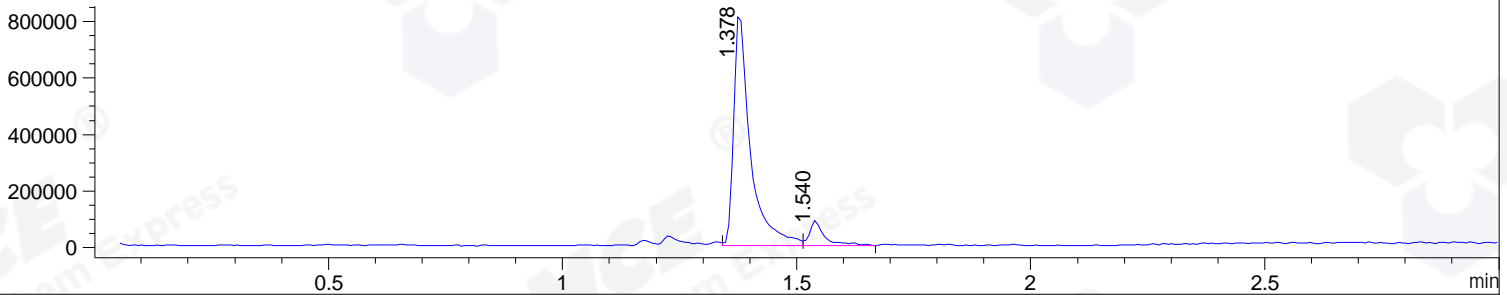


File ..\DATA\2019\20190304\544\CPK2019-228-10258.D Tgt Mass (CHM):
 Injection Date : 4 Mar 19 4:39 pm +0800 Seq. Line : 48
 Sample Name : CPK2019-228-10258 Location : P2-D-06
 Acq. Operator : LQ_1052 Inj : 1
 Spec. Reported : MS Integration Inj Volume : 1 ul
 Acq. Method : D:\Chem32\1\data\2019\20190304\544\1-POS-3MIN-1.M
 Analysis Method : D:\CHEM32\1\DATA\2019\20190304\544\1-POS-3MIN-1.M
 Catalog No : HY-70053 Batch#10258
 Method Info : Mobile Phase: A: water(0.01%TFA) B:ACN(0.01%TFA)
 Gradient: 5% to 95%B within 1.3 min
 Flow Rate :1.8ml/min
 Column :SunFire C18, 4.6*50mm,3.5um A-RP-314
 Oven Temperature : 45

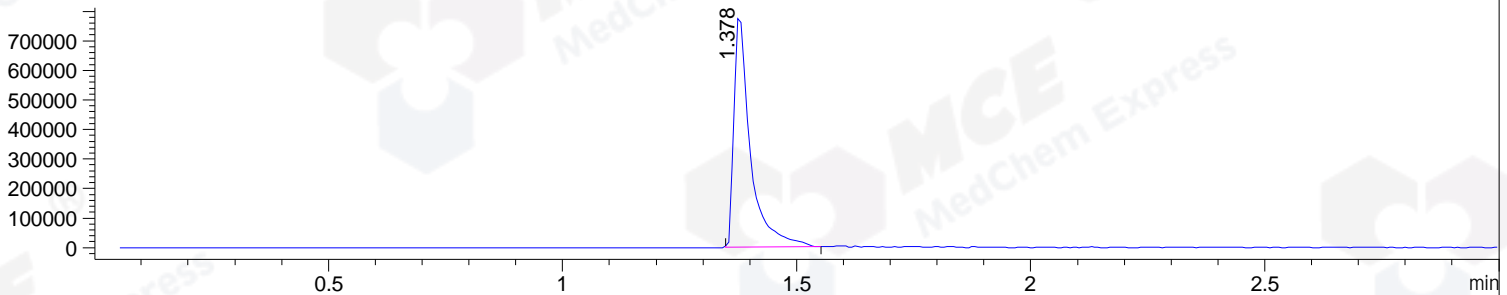
DAD1 B, Sig=214,4 Ref=off



MSD1 TIC, MS File ES-API, Pos, Scan, Frag: 70



Ion 412.6, MSD1 412.6, Target Mass 411.6 +H Positive, EIC=412.3:413.3



Integration Results for DAD1 B, Sig=214,4 Ref=off

RetTim	Width	Area	Height	Area%	MS (+)
1.21	0.01	18.87	18.62	1.42	342
1.36	0.02	1295.13	1199.12	97.26	412
1.52	0.01	17.59	18.88	1.32	482

Integration Results for MSD1 TIC, MS File

RetTim	Width	Area	Height	Area%	MS (+)
1.38	0.04	2031872.63	829226.06	90.93	412
1.54	0.03	202659.30	88849.57	9.07	482

Ret. Time: 1.38

<<<< POSITIVE SPECTRA >>>>

ES-API Positive



Ret. Time: 1.54

ES-API Positive

