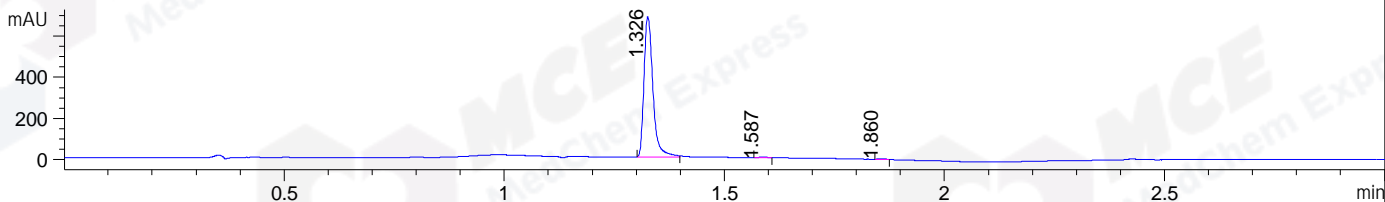
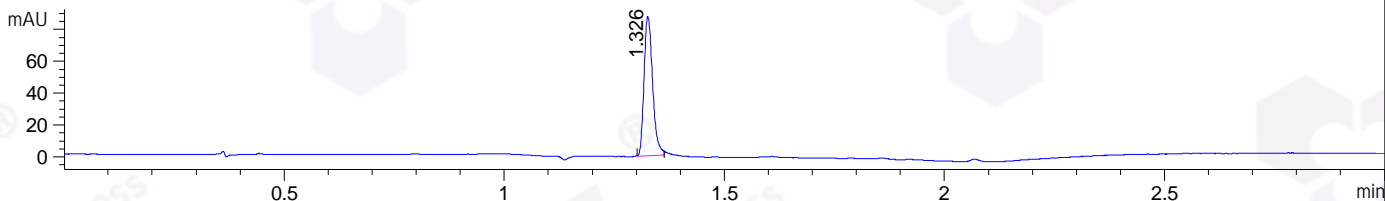


File ..32\1\DATA\2019\20190404\559\FSD6180-038-3.D Tgt Mass (CHM):  
 Injection Date : 4 Apr 19 10:53 am +0800 Seq. Line : 23  
 Sample Name : FSD6180-038-3 Location : P2-D-04  
 Acq. Operator : LQ\_1052 Inj : 1  
 Spec. Reported : MS Integration Inj Volume : 1 ul  
 Acq. Method : D:\Chem32\1\data\2019\20190404\559\1-POS-3MIN-1.M  
 Analysis Method : D:\CHEM32\1\DATA\2019\20190404\559\1-POS-3MIN-1.M  
 Catalog No : HY-70059 Batch# 39673  
 Method Info : Mobile Phase: A: water(0.01%TFA) B:ACN(0.01%TFA)  
 Gradient: 5% to 95%B within 1.3 min  
 Flow Rate :1.8ml/min  
 Column :SunFire C18, 4.6\*50mm,3.5um A-RP-314  
 Oven Temperature : 45□

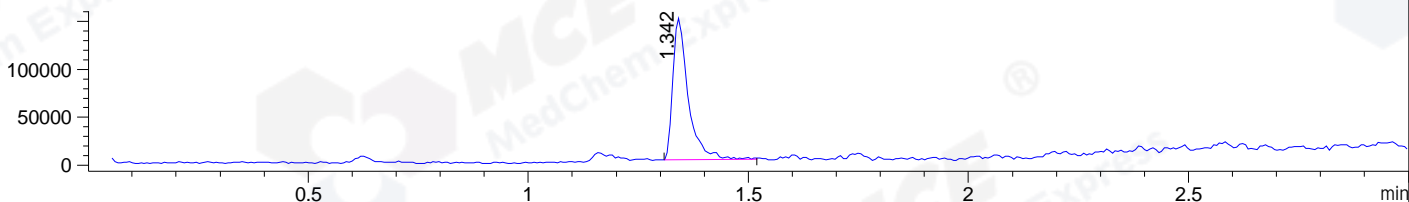
DAD1 B, Sig=214,4 Ref=off



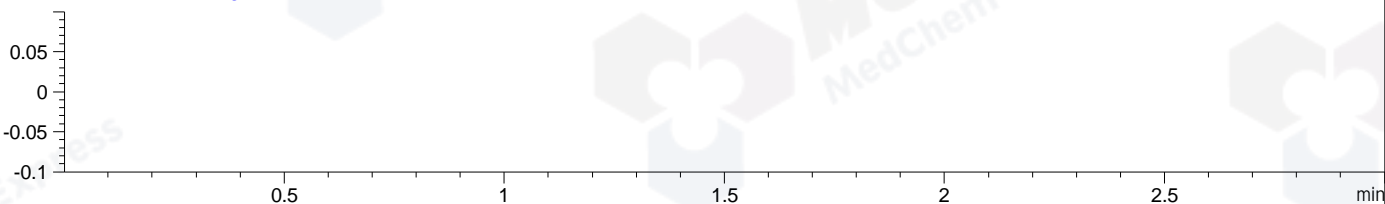
DAD1 C, Sig=254,4 Ref=off



MSD1 TIC, MS File ES-API, Pos, Scan, Frag: 70



Ion 1, MSD1 1, Target Mass 0 +H Positive, EIC=0.7:1.7



Integration Results for DAD1 B, Sig=214,4 Ref=off

RetTim	Width	Area	Height	Area%	MS (+)
1.33	0.02	965.51	683.58	99.11	354
1.59	0.02	5.20	4.49	0.53	ND
1.86	0.02	3.52	3.09	0.36	ND

Integration Results for DAD1 C, Sig=254,4 Ref=off

RetTim	Width	Area	Height	Area%	MS (+)
1.33	0.02	118.11	87.48	100.00	354

Integration Results for MSD1 TIC, MS File

RetTim	Width	Area	Height	Area%	MS (+)
1.34	0.04	361666.09	148028.47	100.00	354

Ret. Time: 1.34

<<<< POSITIVE SPECTRA >>>>

ES-API Positive

