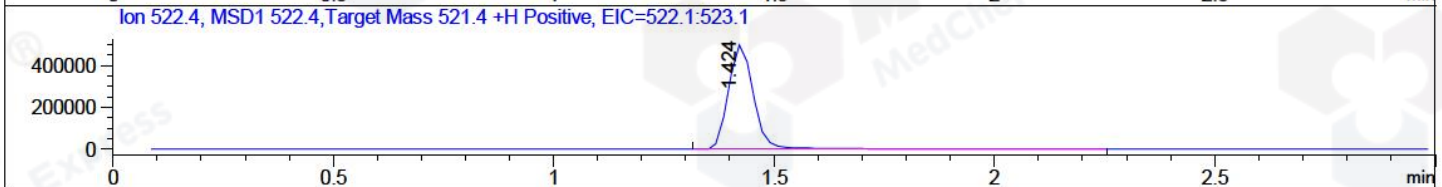
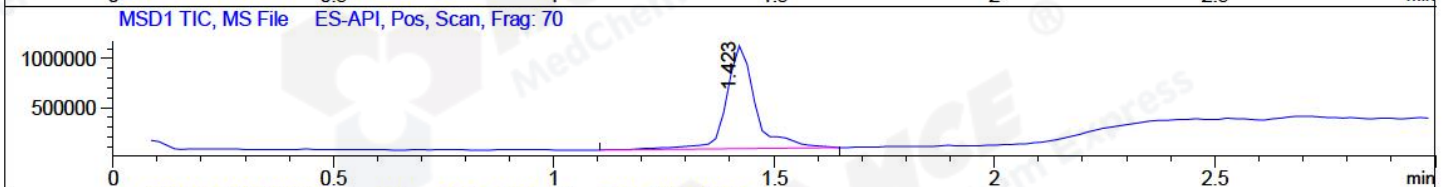
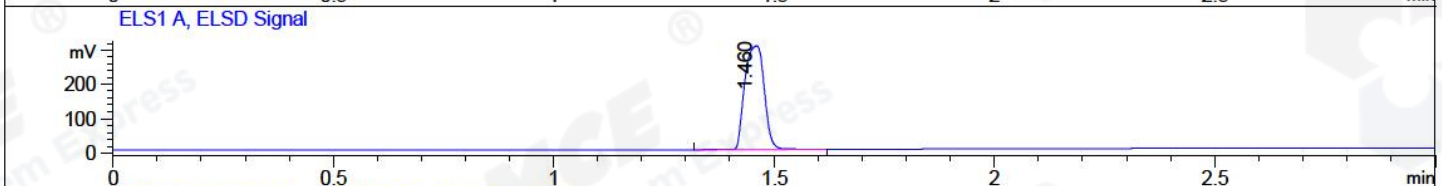
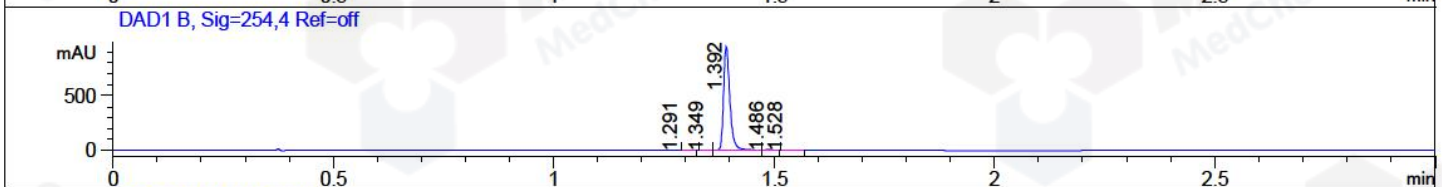
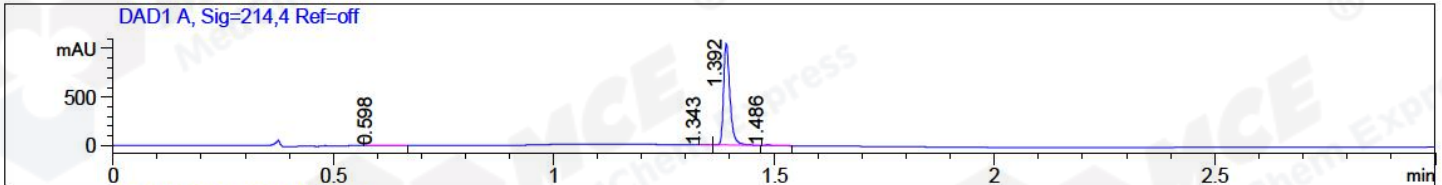


File ..\2018\20180601\20180601\CPK2018-601-02767.D Tgt Mass (CHM):
Injection Date : 1 Jun 18 7:02 pm +0800 Seq. Line : 124
Sample Name : CPK2018-601-02767 Location : P2-B-09
Acq. Operator : SYSTEM Inj : 1
Spec. Reported : MS Integration Inj Volume : 2 ul
Acq. Method : D:\LCMS03\Data\2018\20180601\20180601\1-POS-3MIN.M
Analysis Method : D:\LCMS03\Data\2018\20180601\20180601\1-POS-3MIN.M
Catalog No : HY-70073 Batch#02767
Method Info : Mobile Phase: A: water(0.01%TFA) B:ACN(0.01%TFA)
Gradient: 5% to 95%B within 1.3 min
Flow Rate :1.8ml/min
Column :SunFire C18, 4.6*50mm,3.5um A-RP-186
Oven Temperature : 45C



Integration Results for DAD1 A, Sig=214,4 Ref=off

RetTim	Width	Area	Height	Area%	MS (+)
0.60	0.05	6.31	1.92	0.60	279
1.34	0.02	1.57	1.59	0.15	521
1.39	0.02	1040.15	1044.77	98.81	523
1.49	0.01	4.65	4.75	0.44	535

Integration Results for DAD1 B, Sig=254,4 Ref=off

RetTim	Width	Area	Height	Area%	MS (+)
1.29	0.02	0.60	0.04	0.06	204
1.35	0.02	1.16	1.00	0.12	521
1.39	0.02	930.87	941.28	99.28	523
1.49	0.01	3.91	4.25	0.42	523
1.53	0.02	1.08	0.94	0.12	535

Integration Results for ELS1 A, ELSD Signal

RetTim	Width	Area	Height	Area%	MS (+)
--------	-------	------	--------	-------	--------

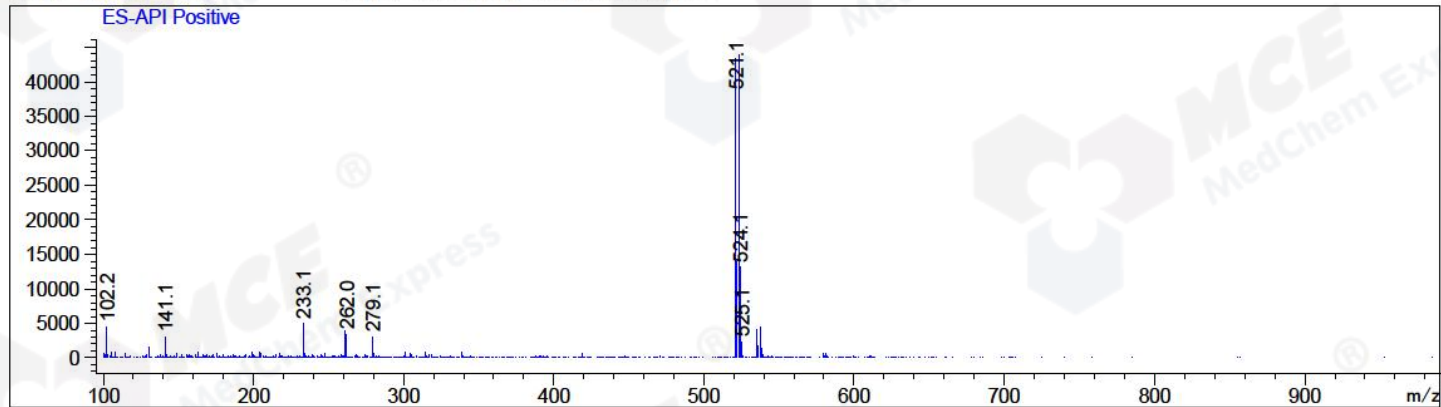
1.46 0.05 925.45 301.96 100.00 523

Integration Results for MSD1 TIC, MS File

RetTime	Width	Area	Height	Area%	MS(+)
1.42	0.07	4768401.00	1045397.19	100.00	523

Ret. Time: 1.42

<<<< POSITIVE SPECTRA >>>>



*** End of Report ***