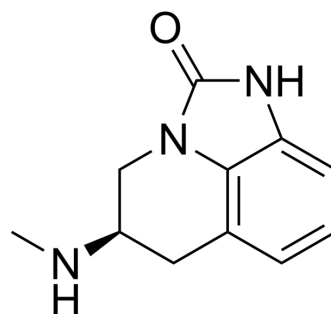


Sumanirole

Cat. No.:	HY-70081
CAS No.:	179386-43-7
Molecular Formula:	C ₁₁ H ₁₃ N ₃ O
Molecular Weight:	203.24
Target:	Dopamine Receptor
Pathway:	GPCR/G Protein; Neuronal Signaling
Storage:	Please store the product under the recommended conditions in the Certificate of Analysis.



BIOLOGICAL ACTIVITY

Description	Sumanirole (PNU-95666E) is a highly selective D ₂ receptor full agonist with an ED ₅₀ of about 46 nM. Sumanirole plays an important role in the research of Parkinson's disease and restless leg syndrome ^[1] .
IC ₅₀ & Target	D ₂ Receptor

CUSTOMER VALIDATION

- Biomed Pharmacother. 2021, 111500.

See more customer validations on www.MedChemExpress.com

REFERENCES

[1]. Arthur G. Romero, et al. Synthesis of the Selective D₂ Receptor Agonist PNU-95666E from D-Phenylalanine Using a Sequential Oxidative Cyclization Strategy. J. Org. Chem. 1997, 62, 6582-6587

Caution: Product has not been fully validated for medical applications. For research use only.

Tel: 609-228-6898

Fax: 609-228-5909

E-mail: tech@MedChemExpress.com

Address: 1 Deer Park Dr, Suite Q, Monmouth Junction, NJ 08852, USA