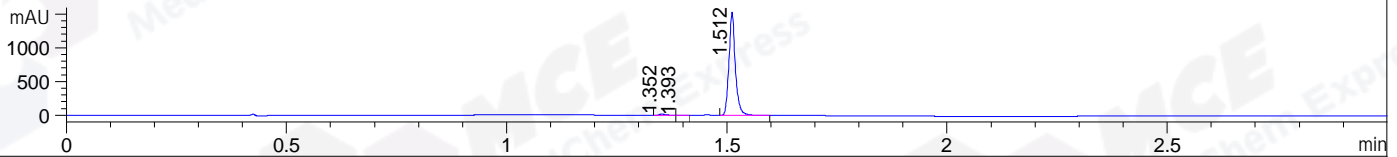
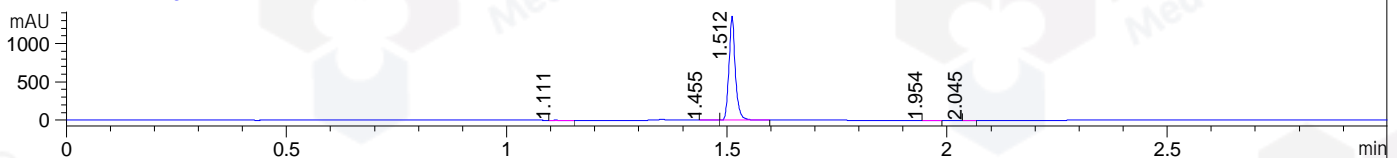


File ..MS03\Data\20190304\20190304\FSD6424-003-2.D Tgt Mass (CHM):
Injection Date : 4 Mar 19 1:54 pm +0800 Seq. Line : 58
Sample Name : FSD6424-003-2 Location : P1-E-09
Acq. Operator : SYSTEM Inj : 1
Spec. Reported : MS Integration Inj Volume : 1 ul
Acq. Method : D:\LCMS03\Data\20190304\20190304\1-POS-3MIN.M
Analysis Method : D:\LCMS03\Data\20190304\20190304\1-POS-3MIN.M
Catalog No : HY-75385 Batch# 39106-20190304
Method Info : Mobile Phase: A: water(0.01%TFA) B:ACN(0.01%TFA)
Gradient: 5% to 95%B within 1.3 min
Flow Rate :1.8ml/min
Column :SunFire C18, 4.6*50mm,3.5um A-RP-392
Oven Temperature : 45C

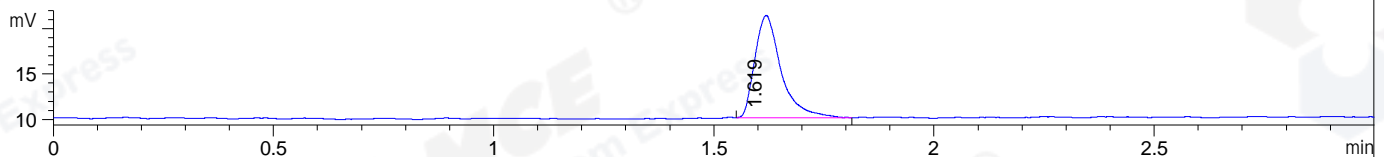
DAD1 A, Sig=214,4 Ref=off



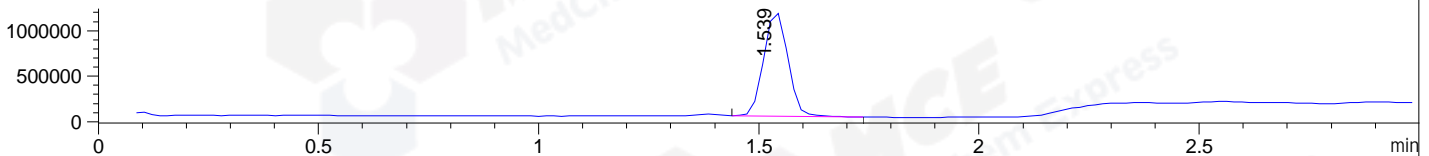
DAD1 B, Sig=254,4 Ref=off



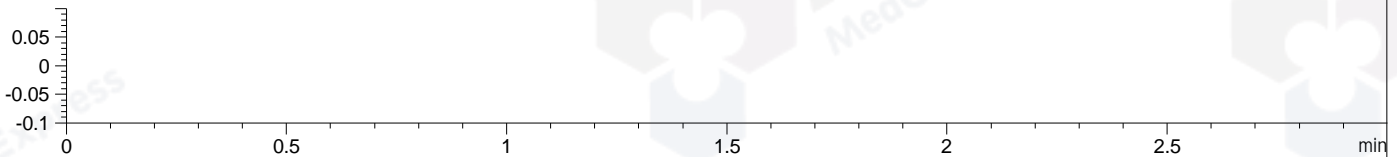
ELS1 A, ELSD Signal



MSD1 TIC, MS File ES-API, Pos, Scan, Frag: 70



Ion 1, MSD1 1, Target Mass 0 +H Positive, EIC=0.7:1.7



Integration Results for DAD1 A, Sig=214,4 Ref=off

RetTim	Width	Area	Height	Area%	MS (+)
1.35	0.01	13.91	15.28	0.90	102
1.39	0.01	0.59	0.77	0.04	102
1.51	0.02	1533.85	1528.64	99.06	551

Integration Results for DAD1 B, Sig=254,4 Ref=off

RetTim	Width	Area	Height	Area%	MS (+)
1.11	0.02	0.23	0.21	0.02	102
1.45	0.01	4.15	4.44	0.30	551
1.51	0.01	1357.79	1348.83	99.66	551
1.95	0.02	0.22	0.20	0.02	114
2.04	0.01	0.09	0.10	0.01	114

Integration Results for ELS1 A, ELSD Signal

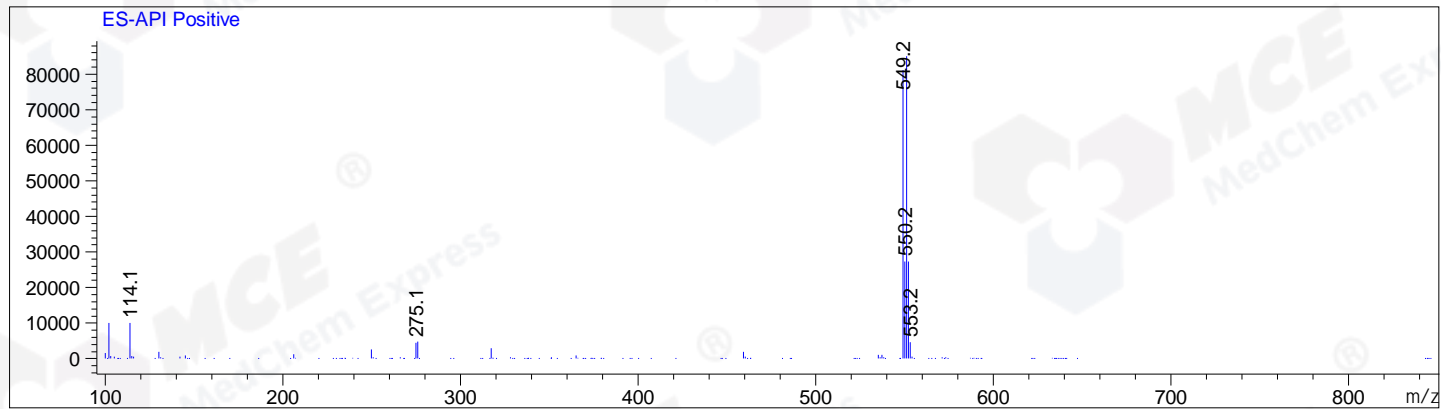
RetTim	Width	Area	Height	Area%	MS (+)
1.62	0.06	46.64	11.23	100.00	551

Integration Results for MSD1 TIC, MS File

RetTim	Width	Area	Height	Area%	MS (+)
1.54	0.06	4329694.50	1150445.00	100.00	551

Ret. Time: 1.54

<<<< POSITIVE SPECTRA >>>>



*** End of Report ***