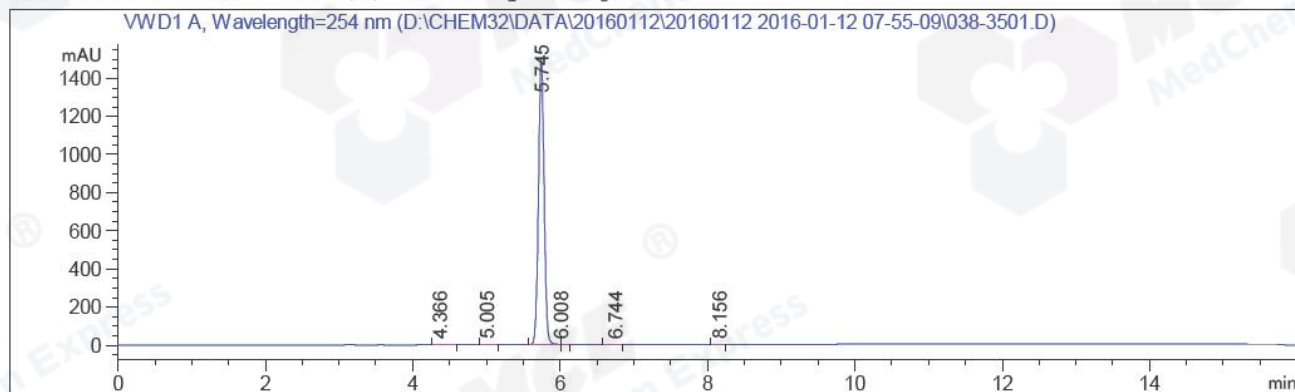


=====  
Acq. Operator : CYL(HPLC-09) Seq. Line : 35  
Acq. Instrument : Instrument 1 Location : Vial 38  
Injection Date : 1/12/2016 6:11:11 PM Inj : 1  
Inj Volume : 5.000 µl  
Acq. Method : D:\CHEM32\DATA\20160112\20160112 2016-01-12 07-55-09\30-90A,254NM.M  
Last changed : 1/12/2016 5:52:26 PM by CYL(HPLC-09)  
(modified after loading)  
Analysis Method : D:\CHEM32\METHODS\RP-HPLC\10-80A(210NM).M  
Last changed : 1/13/2016 8:40:59 AM by CYL(HPLC-09)  
(modified after loading)  
Catalog No : HY-78695 Batch#19234  
A-RP-93

Additional Info : Peak(s) manually integrated



=====  
Area Percent Report  
=====

Sorted By : Signal  
Multiplier: : 1.0000  
Dilution: : 1.0000  
Use Multiplier & Dilution Factor with ISTDs

Signal 1: VWD1 A, Wavelength=254 nm

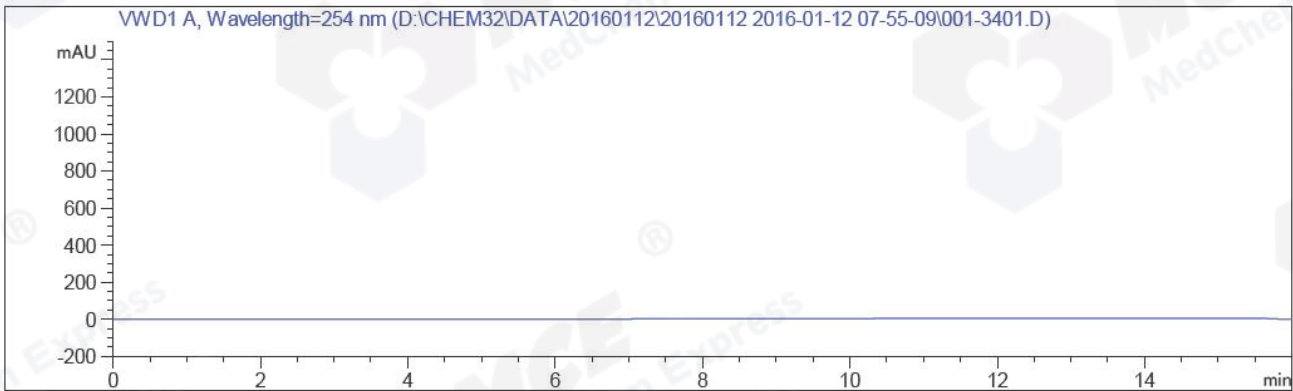
Peak #	RetTime [min]	Type	Width [min]	Area [mAU*s]	Height [mAU]	Area %
1	4.366	BB	0.1179	9.21406	1.29746	0.1142
2	5.005	BB	0.0800	10.52095	2.04559	0.1304
3	5.745	MF	0.0888	8025.61377	1506.60828	99.4874
4	6.008	FM	0.0680	5.66664	1.28937	0.0702
5	6.744	MF	0.1261	9.35119	1.23623	0.1159
6	8.156	MF	0.1182	6.59792	9.30306e-1	0.0818

Totals : 8066.96454 1513.40723

=====  
\*\*\* End of Report \*\*\*

=====  
Acq. Operator : CYL(HPLC-09) Seq. Line : 34  
Acq. Instrument : Instrument 1 Location : Vial 1  
Injection Date : 1/12/2016 5:53:44 PM Inj : 1  
Inj Volume : 5.000 µl  
Acq. Method : D:\CHEM32\DATA\20160112\20160112 2016-01-12 07-55-09\30-90A,254NM.M  
Last changed : 1/12/2016 5:52:26 PM by CYL(HPLC-09)  
(modified after loading)  
Analysis Method : D:\CHEM32\METHODS\RP-HPLC\10-80A(210NM).M  
Last changed : 1/13/2016 8:41:17 AM by CYL(HPLC-09)  
(modified after loading)  
Catalog No : HY-78695 Batch#19234  
A-RP-93

Additional Info : Peak(s) manually integrated



=====  
Area Percent Report  
=====

Sorted By : Signal  
Multiplier: : 1.0000  
Dilution: : 1.0000  
Use Multiplier & Dilution Factor with ISTDs

No peaks found

=====  
\*\*\* End of Report \*\*\*