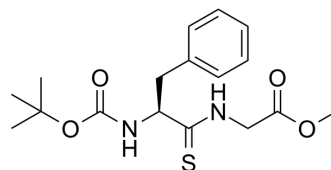


Glycine, N-[(1,1-dimethylethoxy)carbonyl]thio-L-phenylalanyl-, methyl ester

Cat. No.:	HY-78824
CAS No.:	128421-85-2
Molecular Formula:	C ₁₇ H ₂₄ N ₂ O ₄ S
Molecular Weight:	352.45
Target:	Others
Pathway:	Others
Storage:	Please store the product under the recommended conditions in the Certificate of Analysis.



BIOLOGICAL ACTIVITY

Description

Glycine, N-[(1,1-dimethylethoxy)carbonyl]thio-L-phenylalanyl-, methyl ester (compound 3b) is a polypeptide compound containing sulfamide, can be used to synthesis peptide-agent coupling compounds^[1].

REFERENCES

[1]. Xuefeng Jiang, et al. Polypeptide compound containing sulfamide and synthesis method thereof. (CN113912524A)

Caution: Product has not been fully validated for medical applications. For research use only.

Tel: 609-228-6898

Fax: 609-228-5909

E-mail: tech@MedChemExpress.com

Address: 1 Deer Park Dr, Suite Q, Monmouth Junction, NJ 08852, USA