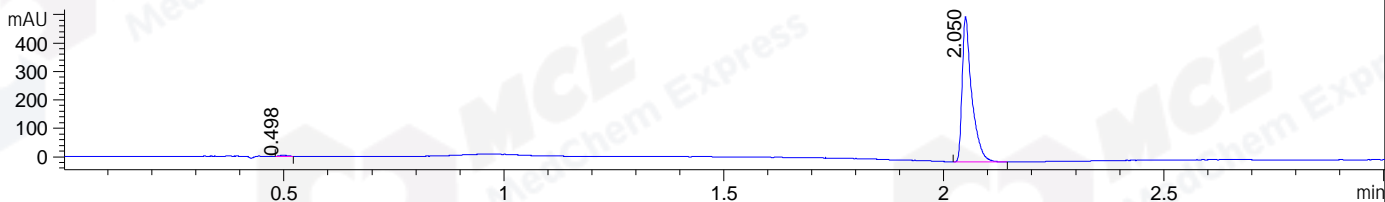
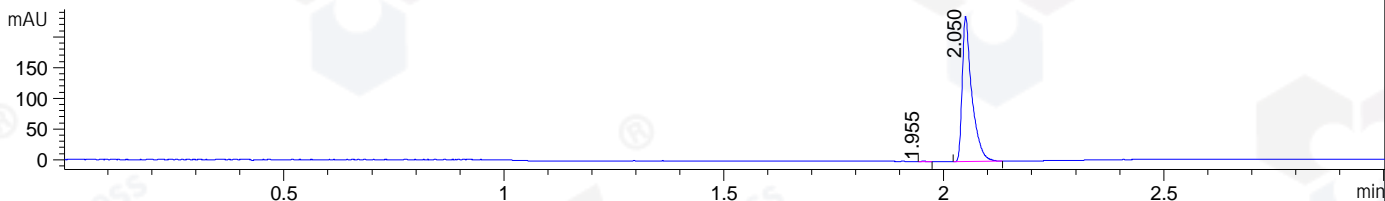


File ..\DATA\2019\20191008\720\CPK2019-008-23354.D Tgt Mass (CHM):
 Injection Date : 8 Oct 19 5:41 pm +0800 Seq. Line : 91
 Sample Name : CPK2019-008-23354 Location : P1-E-03
 Acq. Operator : ZJ_1432 Inj : 1
 Spec. Reported : MS Integration Inj Volume : 1 ul
 Acq. Method : D:\Chem32\1\data\2019\20191008\720\1-POS-3MIN.M
 Analysis Method : D:\CHEM32\1\DATA\2019\20191008\720\1-POS-3MIN.M
 Catalog No : HY-79593 Batch#23354
 Method Info : Mobile Phase: A: water(0.01%TFA) B:ACN(0.01%TFA)
 Gradient: 5% to 95%B within 1.3 min
 Flow Rate :1.8ml/min
 Column :SunFire C18, 4.6*50mm,3.5um A-RP-433
 Oven Temperature : 45□

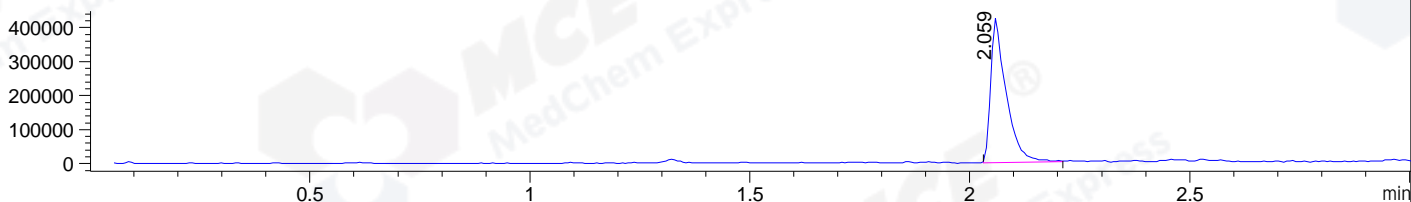
DAD1 B, Sig=214,4 Ref=off



DAD1 C, Sig=254,4 Ref=off



MSD1 TIC, MS File ES-API, Pos, Scan, Frag: 70



Ion 420.22089, MSD1 420.22089, Target Mass 419.22089 +H Positive, EIC=419.92:420.92



Integration Results for DAD1 B, Sig=214,4 Ref=off

RetTim	Width	Area	Height	Area%	MS (+)
0.50	0.02	4.25	3.88	0.54	ND
2.05	0.03	776.88	511.91	99.46	420

Integration Results for DAD1 C, Sig=254,4 Ref=off

RetTim	Width	Area	Height	Area%	MS (+)
1.95	0.02	0.32	0.32	0.09	ND
2.05	0.03	360.95	236.91	99.91	420

Integration Results for MSD1 TIC, MS File

RetTim	Width	Area	Height	Area%	MS (+)
2.06	0.03	1035358.13	426345.13	100.00	420

Ret. Time: 2.06

<<<< POSITIVE SPECTRA >>>>

ES-API Positive

