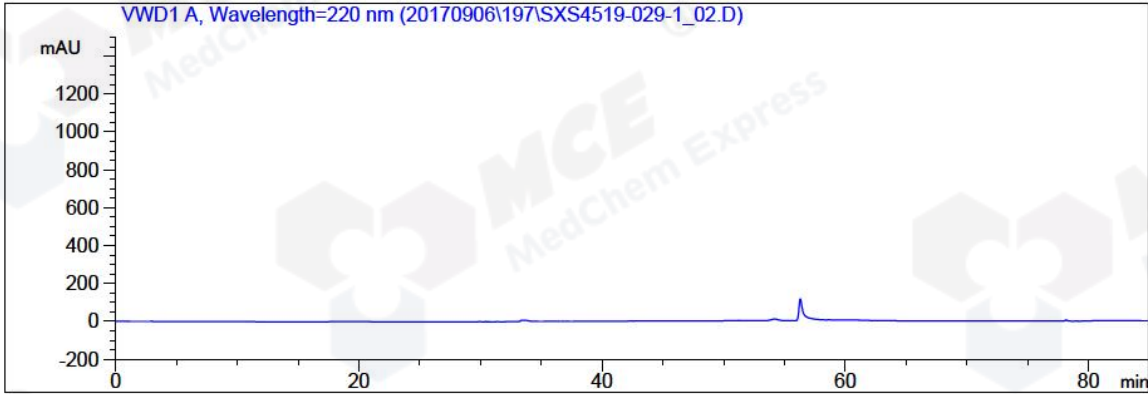


=====

Acq. Operator	: LCY (HPLC-21)	Seq. Line	: 1
Acq. Instrument	: HPLC-21	Location	: Vial 48
Injection Date	: 9/6/2017 6:31:42 PM	Inj	: 2
		Inj Volume	: 5 µl
Acq. Method	: D:\AGILENT CHEM32\DATA\20170906\197\HY-A0036-20170527,CD,C1.M		
Last changed	: 9/6/2017 3:19:30 PM by LCY (HPLC-21)		
Analysis Method	: D:\AGILENT CHEM32\METHODS\WASH 90H2O,,BC,C1.M		
Last changed	: 9/7/2017 9:00:17 AM by LCY (HPLC-21)		
	(modified after loading)		
Catalog No	: HY-A0036 Batch#26265		



=====
Area Percent Report
=====

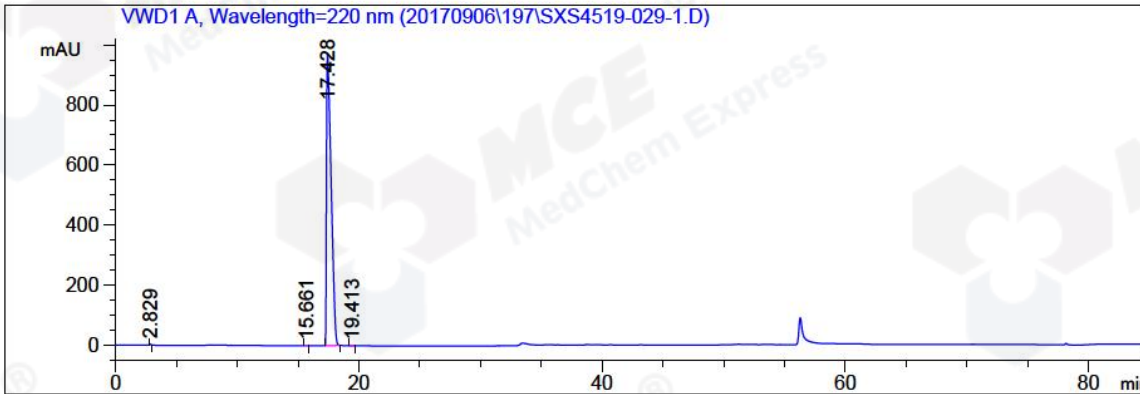
Sorted By : Signal
Multiplier: : 1.0000
Dilution: : 1.0000
Use Multiplier & Dilution Factor with ISTDs

No peaks found

=====
*** End of Report ***
=====

=====

Acq. Operator	: LCY (HPLC-21)	Seq. Line	: 2
Acq. Instrument	: HPLC-21	Location	: Vial 49
Injection Date	: 9/6/2017 7:57:25 PM	Inj	: 1
		Inj Volume	: 5 µl
Acq. Method	: D:\AGILENT CHEM32\DATA\20170906\197\HY-A0036-20170527,CD,C1.M		
Last changed	: 9/6/2017 3:19:30 PM by LCY (HPLC-21)		
Analysis Method	: D:\AGILENT CHEM32\METHODS\WASH 90H2O,,BC,C1.M		
Last changed	: 9/7/2017 9:00:51 AM by LCY (HPLC-21)		
	(modified after loading)		
Catalog No	: HY-A0036 Batch#26265		
	A-RP-173		



=====
Area Percent Report
=====

Sorted By : Signal
Multiplier: : 1.0000
Dilution: : 1.0000
Use Multiplier & Dilution Factor with ISTDs

Signal 1: VWD1 A, Wavelength=220 nm

Peak #	RetTime [min]	Type	Width [min]	Area mAU *s	Height [mAU]	Area %
1	2.829	MF	0.0697	17.38797	4.15492	0.0671
2	15.661	MF	0.1722	6.70614	6.49053e-1	0.0259
3	17.428	BB	0.3900	2.58652e4	973.80823	99.8842
4	19.413	MM	0.2042	5.89762	4.81275e-1	0.0228

Totals : 2.58952e4 979.09348

=====
*** End of Report ***