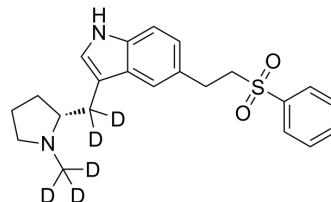


## Eletriptan-d5

<b>Cat. No.:</b>	HY-A0039S1
<b>CAS No.:</b>	1126745-65-0
<b>Molecular Formula:</b>	C <sub>22</sub> H <sub>21</sub> D <sub>5</sub> N <sub>2</sub> O <sub>2</sub> S
<b>Molecular Weight:</b>	387.55
<b>Target:</b>	5-HT Receptor
<b>Pathway:</b>	GPCR/G Protein; Neuronal Signaling
<b>Storage:</b>	Please store the product under the recommended conditions in the Certificate of Analysis.



### BIOLOGICAL ACTIVITY

<b>Description</b>	Eletriptan-d <sub>5</sub> is the deuterium labeled Eletriptan[1]. Eletriptan (UK-116044) is a highly selective and orally active serotonin 5-HT <sub>1B</sub> and 5-HT <sub>1D</sub> receptor agonist, with pK <sub>i</sub> values of 8.0 and 8.9, respectively. Eletriptan has inhibitory effects on markers of neurogenic inflammation in rats. Eletriptan can be used for researching migraine[2].
<b>In Vitro</b>	Stable heavy isotopes of hydrogen, carbon, and other elements have been incorporated into drug molecules, largely as tracers for quantitation during the drug development process. Deuteration has gained attention because of its potential to affect the pharmacokinetic and metabolic profiles of drugs <sup>[1]</sup> . MCE has not independently confirmed the accuracy of these methods. They are for reference only.

### REFERENCES

- [1]. Russak EM, et al. Impact of Deuterium Substitution on the Pharmacokinetics of Pharmaceuticals. *Ann Pharmacother*. 2019 Feb;53(2):211-216.
- [2]. McCormack PL, Keating GM. Eletriptan: a review of its use in the acute treatment of migraine. *Drugs*. 2006;66(8):1129-49.
- [3]. Willems E, et al. Porcine carotid vascular effects of eletriptan (UK-116,044): a new 5-HT<sub>1B/1D</sub> receptor agonist with anti-migraine activity. *Naunyn Schmiedebergs Arch Pharmacol*. 1998 Aug;358(2):212-9.

**Caution: Product has not been fully validated for medical applications. For research use only.**

Tel: 609-228-6898

Fax: 609-228-5909

E-mail: tech@MedChemExpress.com

Address: 1 Deer Park Dr, Suite Q, Monmouth Junction, NJ 08852, USA