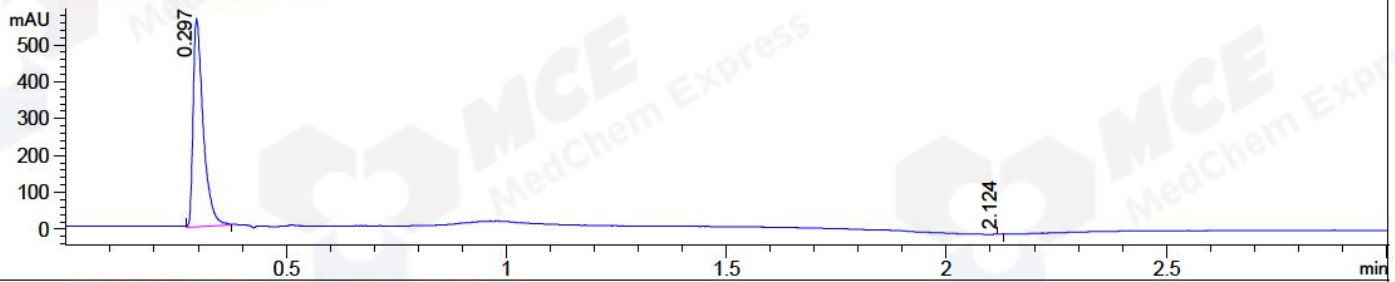


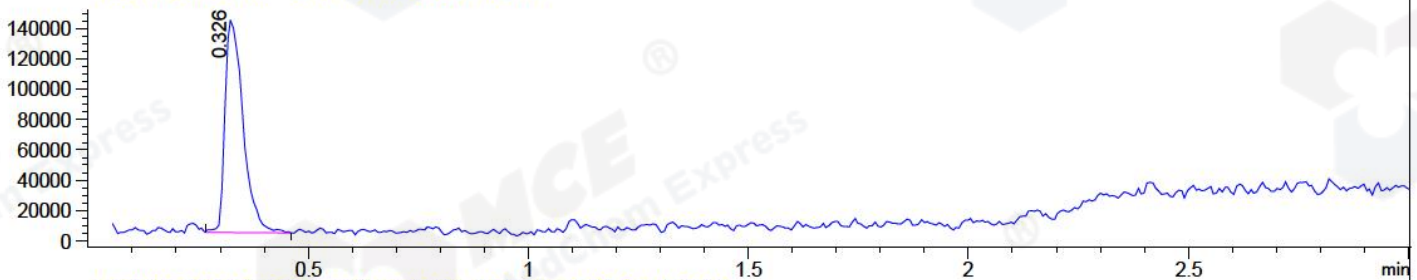
File ..ATA\2018\20181226\548\CPK2018-D25-10231-1.D Tgt Mass (CHM):

Injection Date : 26 Dec 18 10:05 am +0800 Seq. Line : 12
 Sample Name : CPK2018-D25-10231 Location : P2-C-09
 Acq. Operator : LQ_1052 Inj : 1
 Spec. Reported : MS Integration Inj Volume : 0.5 ul
 Acq. Method : D:\Chem32\1\data\2018\20181226\548\1-POS-3MIN-1.M
 Analysis Method : D:\CHEM32\1\DATA\2018\20181226\548\1-POS-3MIN-1.M
 Catalog No : HY-A0063 Batch#10231
 Method Info : Mobile Phase: A: water(0.01%TFA) B:ACN(0.01%TFA)
 Gradient: 5% to 95%B within 1.3 min
 Flow Rate :1.8ml/min
 Column :SunFire C18, 4.6*50mm,3.5um A-RP-314
 Oven Temperature : 45□

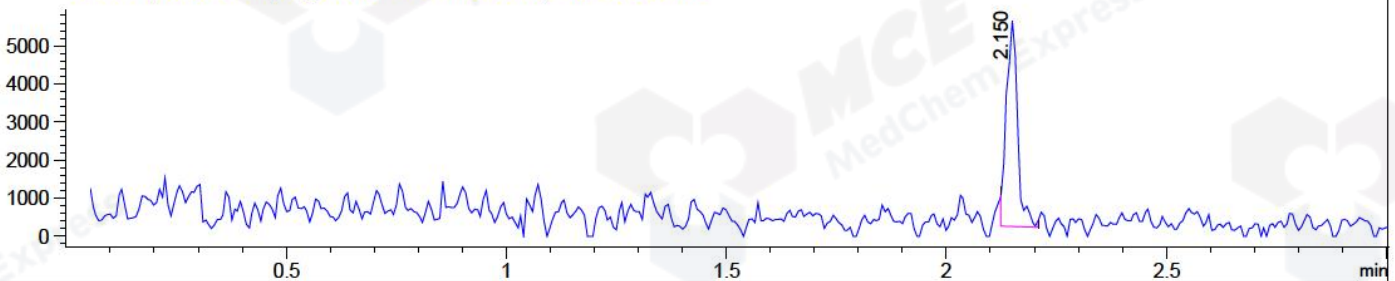
DAD1 B, Sig=214,4 Ref=off



MSD1 TIC, MS File ES-API, Pos, Scan, Frag: 70



Ion 280.1, MSD1 280.1, Target Mass 279.1 +H Positive, EIC=279.8:280.8



Integration Results for DAD1 B, Sig=214,4 Ref=off

RetTim	Width	Area	Height	Area%	MS (+)
0.30	0.03	899.53	562.54	99.94	243
2.12	0.01	0.57	0.88	0.06	159

Integration Results for MSD1 TIC, MS File

RetTim	Width	Area	Height	Area%	MS (+)
0.33	0.05	403726.59	139860.17	100.00	243

Ret. Time: 0.33

<<<< POSITIVE SPECTRA >>>>

ES-API Positive

