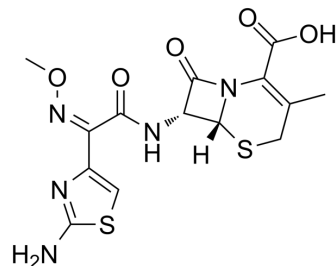


Cefetamet

| | | |
|--------------------|------------------------------------------------------------------------------|----------------|
| Cat. No.: | HY-A0111 | |
| CAS No.: | 65052-63-3 | |
| Molecular Formula: | C ₁₄ H ₁₅ N ₅ O ₅ S ₂ | |
| Molecular Weight: | 397.43 | |
| Target: | Antibiotic; Bacterial | |
| Pathway: | Anti-infection | |
| Storage: | Powder | -20°C 3 years |
| | In solvent | -80°C 6 months |
| | | -20°C 1 month |



SOLVENT & SOLUBILITY

| | | | | | |
|-------------------------------------------------------------------------------|------------------------------------------------------------------------------------------------------------------------------------------|--------------------------|-----------|------------|------------|
| In Vitro | DMSO : 25 mg/mL (62.90 mM; Need ultrasonic) | | | | |
| | | Solvent Concentration | Mass | | |
| | Preparing Stock Solutions | | 1 mg | 5 mg | 10 mg |
| | | 1 mM | 2.5162 mL | 12.5808 mL | 25.1617 mL |
| | | 5 mM | 0.5032 mL | 2.5162 mL | 5.0323 mL |
| | 10 mM | 0.2516 mL | 1.2581 mL | 2.5162 mL | |
| Please refer to the solubility information to select the appropriate solvent. | | | | | |
| In Vivo | 1. Add each solvent one by one: 10% DMSO >> 40% PEG300 >> 5% Tween-80 >> 45% saline Solubility: ≥ 2.5 mg/mL (6.29 mM); Clear solution | | | | |
| | 2. Add each solvent one by one: 10% DMSO >> 90% (20% SBE-β-CD in saline) Solubility: ≥ 2.5 mg/mL (6.29 mM); Clear solution | | | | |
| | 3. Add each solvent one by one: 10% DMSO >> 90% corn oil Solubility: ≥ 2.5 mg/mL (6.29 mM); Clear solution | | | | |

BIOLOGICAL ACTIVITY

| | |
|---------------------------|--------------------------------------------------------------------------------------------------------------------------------------------------------------------------------|
| Description | Cefetamet is a cephalosporin antibiotic. Cefetamet has the potential for the research of both upper and lower community-acquired respiratory tract infections ^[1] . |
| IC ₅₀ & Target | β-lactam |

REFERENCES

Caution: Product has not been fully validated for medical applications. For research use only.

Tel: 609-228-6898

Fax: 609-228-5909

E-mail: tech@MedChemExpress.com

Address: 1 Deer Park Dr, Suite Q, Monmouth Junction, NJ 08852, USA