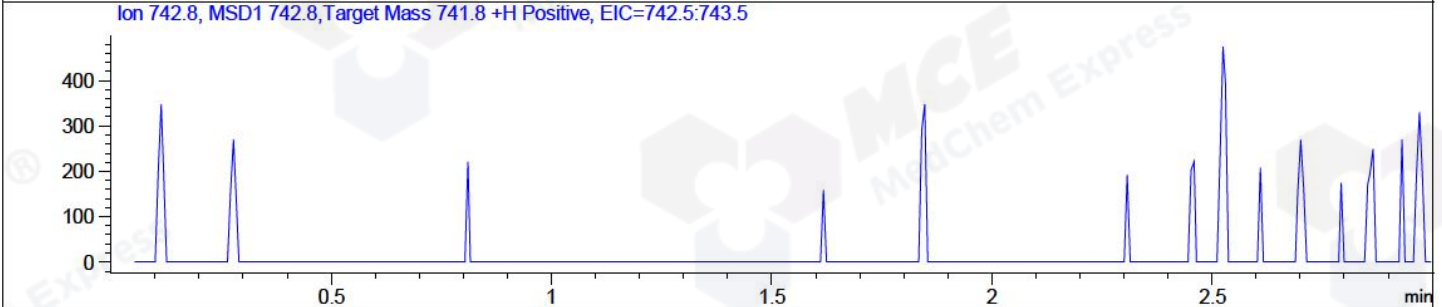
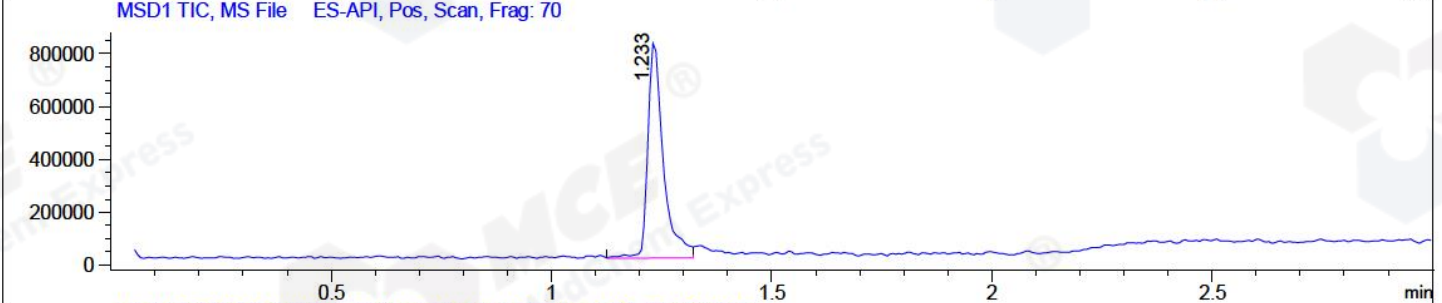
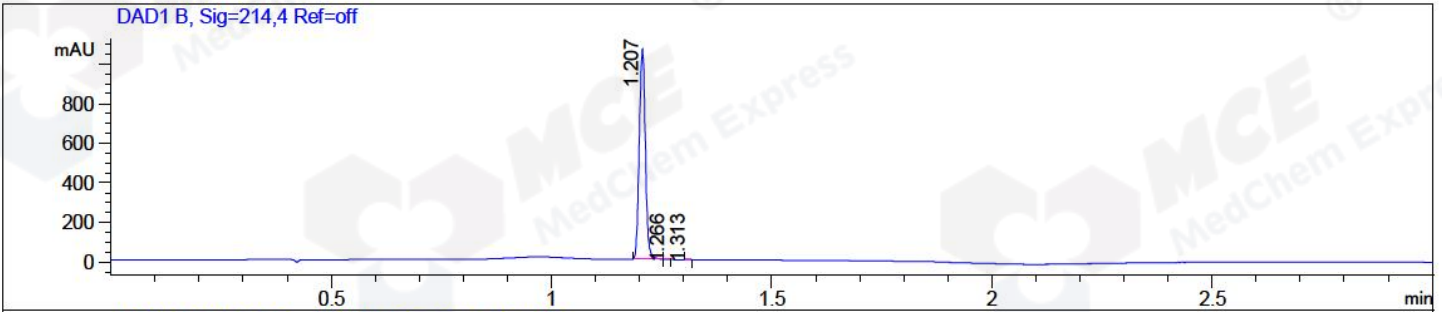


File ..\DATA\2018\20181203\506\CPK2018-D03-19419.D Tgt Mass (CHM):
Injection Date : 3 Dec 18 4:54 pm +0800 Seq. Line : 5
Sample Name : CPK2018-D03-19419 Location : P2-D-02
Acq. Operator : LQ_1052 Inj : 1
Spec. Reported : MS Integration Inj Volume : 1 ul
Acq. Method : D:\Chem32\1\data\2018\20181203\506\1-POS-3MIN-1.M
Analysis Method : D:\CHEM32\1\DATA\2018\20181203\506\1-POS-3MIN-1.M
Catalog No : HY-A0118A Batch#19419 A-RP-314
Method Info : Mobile Phase: A: water(0.01%TFA) B:ACN(0.01%TFA)
Gradient: 5% to 95%B within 1.3 min
Flow Rate :1.8ml/min
Column :SunFire C18, 4.6*50mm,3.5um A-RP-314
Oven Temperature : 45□



Integration Results for DAD1 B, Sig=214,4 Ref=off

RetTim	Width	Area	Height	Area%	MS (+)
1.21	0.01	1021.62	1060.49	99.90	327
1.27	0.01	0.66	0.98	0.06	327
1.31	0.01	0.38	0.59	0.04	652

Integration Results for MSD1 TIC, MS File

RetTim	Width	Area	Height	Area%	MS (+)
1.23	0.04	1997395.75	823267.00	100.00	327

Ret. Time: 1.23

<<<< POSITIVE SPECTRA >>>>

ES-API Positive

