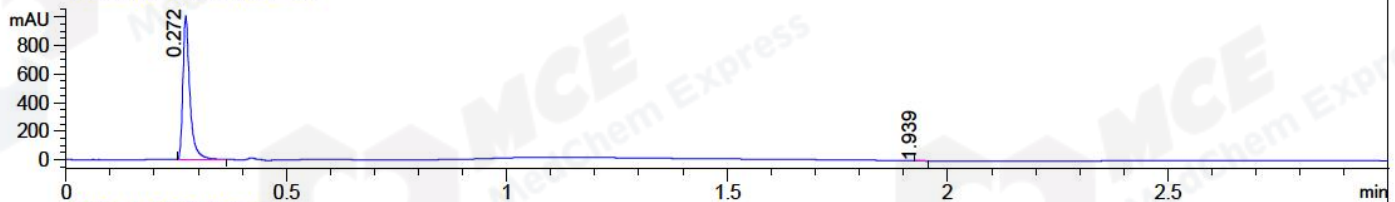
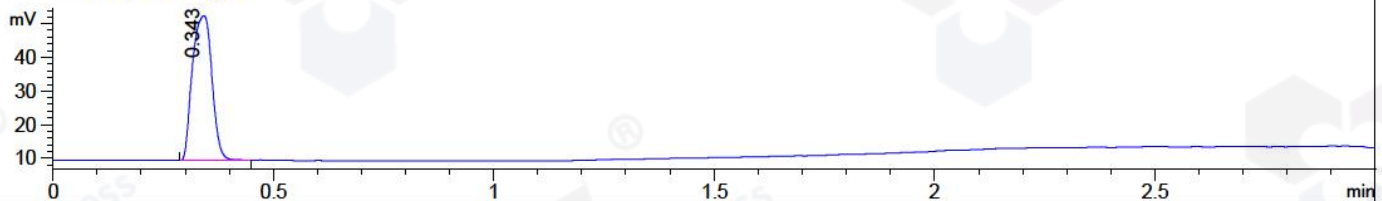


File ..18\20180326\20180326-4 1\BIZ2018-326-WYQ5.D Tgt Mass (CHM):
 Injection Date : 27 Mar 18 12:03 am +0800 Seq. Line : 48
 Sample Name : BIZ2018-326-WYQ5 Location : P2-E-08
 Acq. Operator : SYSTEM Inj : 1
 Spec. Reported : MS Integration Inj Volume : 1 ul
 Acq. Method : D:\LCMS03\Data\2018\20180326\20180326-4 1\1-POS-3MIN.M
 Analysis Method : D:\LCMS03\Data\2018\20180326\20180326-4 1\1-POS-3MIN.M
 Catalog No : HY-A0124A Batch#29227
 Method Info : Mobile Phase: A: water(0.01%TFA) B:ACN(0.01%TFA)
 Gradient: 5% to 95%B within 1.3 min
 Flow Rate :1.8ml/min
 Column :SunFire C18, 4.6*50mm,3.5um A-RP-186
 Oven Temperature : 45C

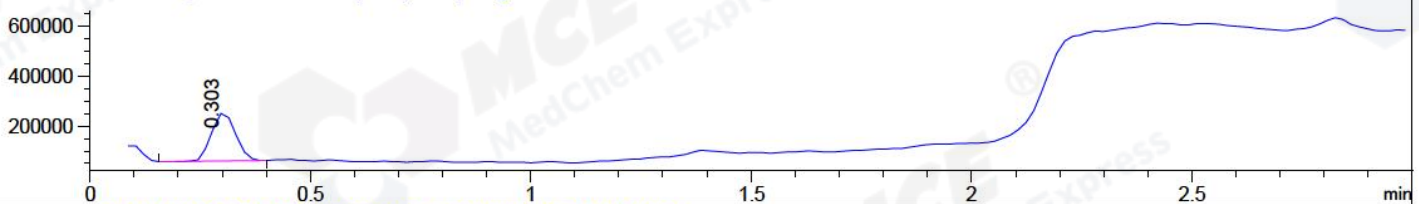
DAD1 A, Sig=214,4 Ref=off



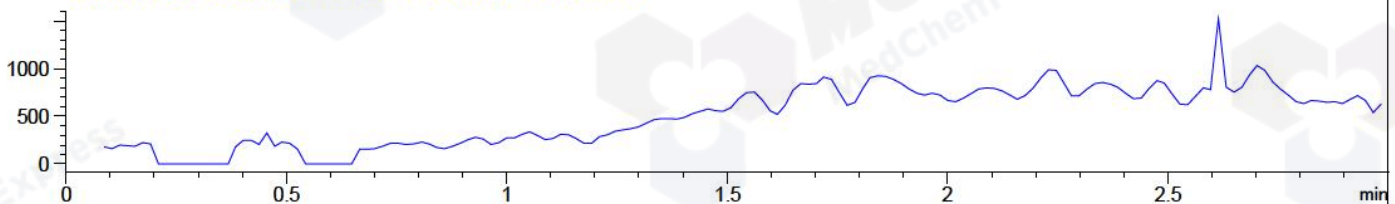
ELS1 A, ELSD Signal



MSD1 TIC, MS File ES-API, Pos, Scan, Frag: 70



Ion 314, MSD1 314, Target Mass 313 +H Positive, EIC=313.7:314.7



Integration Results for DAD1 A, Sig=214,4 Ref=off

RetTim	Width	Area	Height	Area%	MS (+)
0.27	0.02	1100.19	1002.47	99.97	242
1.94	0.02	0.36	0.34	0.03	130

Integration Results for ELS1 A, ELSD Signal

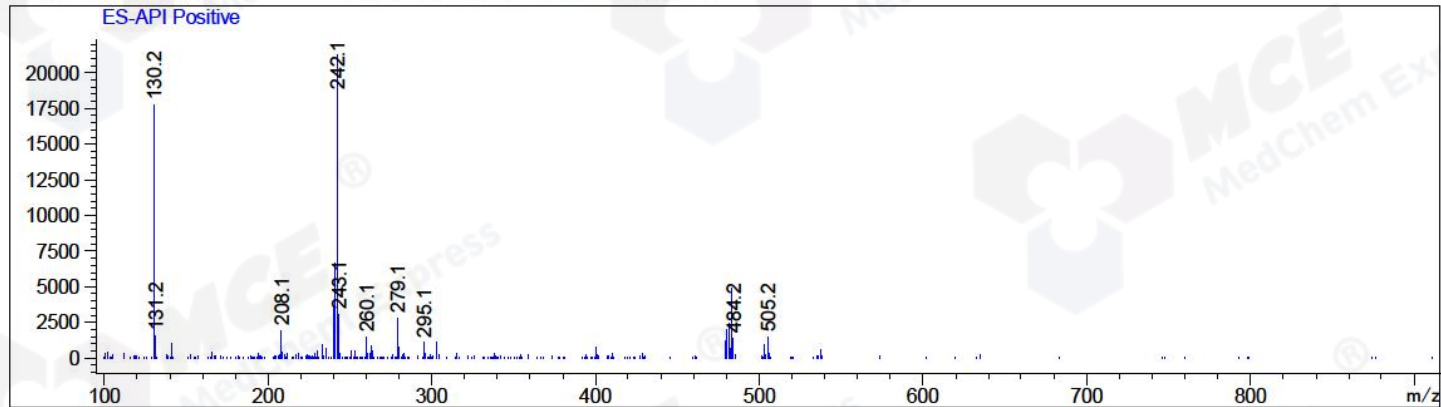
RetTim	Width	Area	Height	Area%	MS (+)
0.34	0.05	132.41	43.03	100.00	242

Integration Results for MSD1 TIC, MS File

RetTim	Width	Area	Height	Area%	MS (+)
0.30	0.06	729423.31	193933.14	100.00	242

Ret. Time: 0.30

<<<< POSITIVE SPECTRA >>>>



*** End of Report ***