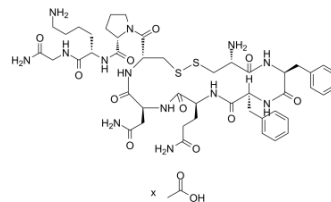


Felypressin acetate

Cat. No.:	HY-A0182A
CAS No.:	914453-97-7
Molecular Formula:	C ₄₆ H ₆₅ N ₁₃ O ₁₁ S ₂ .xC ₂ H ₄ O ₂
Sequence:	Cys-Phe-Phe-Gln-Asn-Cys-Pro-Lys-Gly-NH ₂ (Disulfide bridge: Cys1-Cys6)
Sequence Shortening:	CFFQNCPKG-NH ₂ (Disulfide bridge: Cys1-Cys6)
Target:	Vasopressin Receptor
Pathway:	GPCR/G Protein
Storage:	Please store the product under the recommended conditions in the Certificate of Analysis.



BIOLOGICAL ACTIVITY

Description	Felypressin acetate (PLV-2 acetate) is a non-catecholamine vasoconstrictor and a vasopressin 1 agonist. Felypressin acetate is widely used in dental procedures ^{[1][2]} .
IC₅₀ & Target	Vasopressin 1 ^[2]
In Vitro	Felypressin is a synthetic hormone of the posterior pituitary lobe characterized by vasoconstrictor properties that is widely used in dental procedures. The vasoconstrictor action of Felypressin seems to be mediated by V1 receptors of the blood vessel smooth muscle cells ^[1] . MCE has not independently confirmed the accuracy of these methods. They are for reference only.
In Vivo	Felypressin can reduce toxicity during dental procedures. Felypressin increases the diastolic blood pressure of hypertensive patients with controlled blood pressure ^[1] . Cardiovascular effects of Felypressin (240 ng/kg; intravenous injection) are studied in Wistar rats. Felypressin induces a pressor effect. Felypressin depends on V1 receptors to induce pressor and bradycardic effects, and that it produces a high relationship between bradycardia and mean arterial pressure variation depending on area postrema and central V1 receptors ^[2] . MCE has not independently confirmed the accuracy of these methods. They are for reference only.

REFERENCES

- [1]. Bronzo AL et al. Felypressin increases blood pressure during dental procedures in hypertensive patients. *Arq Bras Cardiol.* 2012 Aug;99(2):724-31.
- [2]. Cecanho R et al. Cardiovascular effects of felypressin. *Anesth Prog.* 2006 Winter;53(4):119-25.

Caution: Product has not been fully validated for medical applications. For research use only.

Tel: 609-228-6898

Fax: 609-228-5909

E-mail: tech@MedChemExpress.com

Address: 1 Deer Park Dr, Suite Q, Monmouth Junction, NJ 08852, USA