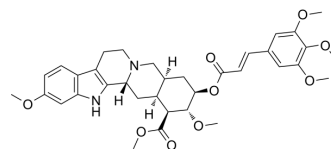


Rescinnamine

Cat. No.:	HY-A0220
CAS No.:	24815-24-5
Molecular Formula:	C ₃₅ H ₄₂ N ₂ O ₉
Molecular Weight:	634.72
Target:	Others
Pathway:	Others
Storage:	Please store the product under the recommended conditions in the Certificate of Analysis.



BIOLOGICAL ACTIVITY

Description

Rescinnamine is a derivative of the indole alkaloid reserpine. Rescinnamine shows sedative effects. Rescinnamine can be used for hypertension research^{[1][2]}.

REFERENCES

[1]. AbdelHafez EM, et al. Computational and synthetic studies towards improving rescinnamine as an inducer of MSH2-dependent apoptosis in cancer treatment. *Mol Cancer Biol.* 2013;1(1):44.

[2]. CRONHEIM G, et al. Pharmacological studies with rescinnamine, a new alkaloid isolated from *Rauwolfia serpentina*. *Proc Soc Exp Biol Med.* 1954 May;86(1):120-4.

Caution: Product has not been fully validated for medical applications. For research use only.

Tel: 609-228-6898

Fax: 609-228-5909

E-mail: tech@MedChemExpress.com

Address: 1 Deer Park Dr, Suite Q, Monmouth Junction, NJ 08852, USA