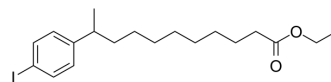


## Iophendylate

Cat. No.:	HY-A0223
CAS No.:	99-79-6
Molecular Formula:	C <sub>19</sub> H <sub>29</sub> IO <sub>2</sub>
Molecular Weight:	416.34
Target:	Biochemical Assay Reagents
Pathway:	Others
Storage:	Please store the product under the recommended conditions in the Certificate of Analysis.



### BIOLOGICAL ACTIVITY

#### Description

Iophendylate (Pantopaque) is a highly lipophilic substance, and can be used as a contrast medium. Iophendylate is mainly for brain and spinal cord visualization<sup>[1][2]</sup>.

### REFERENCES

[1]. Leeds NE, et al. Evolution of diagnostic neuroradiology from 1904 to 1999. *Radiology*. 2000 Nov;217(2):309-18.

[2]. Widlus DM, et al. In vivo evaluation of iophendylate-cyanoacrylate mixtures. *Radiology*. 1992 Oct;185(1):269-73.

**Caution: Product has not been fully validated for medical applications. For research use only.**

Tel: 609-228-6898

Fax: 609-228-5909

E-mail: [tech@MedChemExpress.com](mailto:tech@MedChemExpress.com)

Address: 1 Deer Park Dr, Suite Q, Monmouth Junction, NJ 08852, USA