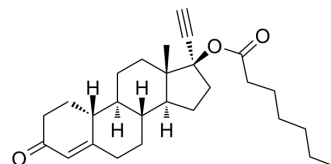


Norethisterone enanthate

Cat. No.:	HY-A0285		
CAS No.:	3836-23-5		
Molecular Formula:	C ₂₇ H ₃₈ O ₃		
Molecular Weight:	410.59		
Target:	Progesterone Receptor		
Pathway:	Others		
Storage:	Powder	-20°C	3 years
		4°C	2 years
	In solvent	-80°C	6 months
		-20°C	1 month



SOLVENT & SOLUBILITY

In Vitro

DMSO : 250 mg/mL (608.88 mM; Need ultrasonic)

Concentration	Solvent	Mass		
		1 mg	5 mg	10 mg
Preparing Stock Solutions	1 mM	2.4355 mL	12.1776 mL	24.3552 mL
	5 mM	0.4871 mL	2.4355 mL	4.8710 mL
	10 mM	0.2436 mL	1.2178 mL	2.4355 mL

Please refer to the solubility information to select the appropriate solvent.

BIOLOGICAL ACTIVITY

Description

Norethisterone enanthate is a long-acting parenteral progestogen. Norethisterone enanthate is orally active^{[1][2][3]}.

In Vitro

Norethisterone enanthate can be used as an intramuscular contraceptive agent^[1].

MCE has not independently confirmed the accuracy of these methods. They are for reference only.

In Vivo

Norethisterone enanthate (20-60 mg; p.o.;5 days) inhibits fertility in female rats^[3].

MCE has not independently confirmed the accuracy of these methods. They are for reference only.

Animal Model:	Female adult albino rats (Wistar/NIN) weighing around 160-180 g ^[1]
Dosage:	20, 30, 40, 50, 60 mg
Administration:	P.o.; 5 days
Result:	A significant reduction in fertility was seen with doses 30 to 60 mg in rats.

REFERENCES

- [1]. Kesserü-Koós E, Larrañaga-Legufa A, Hurtado-Koo H, Scharff HJ. Fertility control with norethindrone enanthate, a long-acting parenteral progestogen. *Acta Eur Fertil.* 1973;4(4):203-221.
- [2]. Ravinder P, Shatrugna V, Nair KM, Sivakumar B. Pharmacokinetics of orally administered norethisterone enanthate in rabbit, monkey, and women. *Contraception.* 1997;55(6):373-379.
- [3]. Ravinder P, Nair KM, Sivakumar B. Biological efficacy and plasma norethisterone levels of orally administered norethisterone enanthate in rat and hamster. *Indian J Physiol Pharmacol.* 1998;42(4):485-490.
-

Caution: Product has not been fully validated for medical applications. For research use only.

Tel: 609-228-6898

Fax: 609-228-5909

E-mail: tech@MedChemExpress.com

Address: 1 Deer Park Dr, Suite Q, Monmouth Junction, NJ 08852, USA