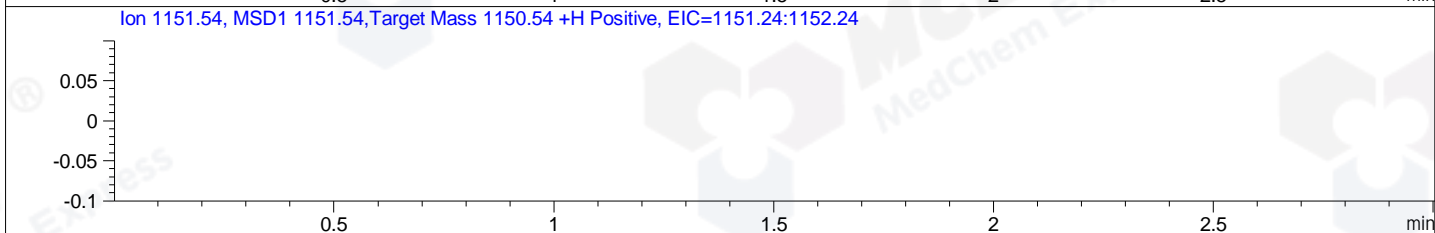
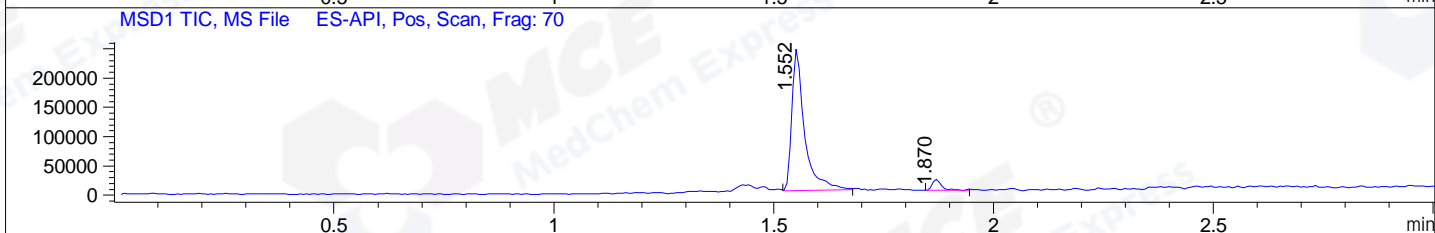
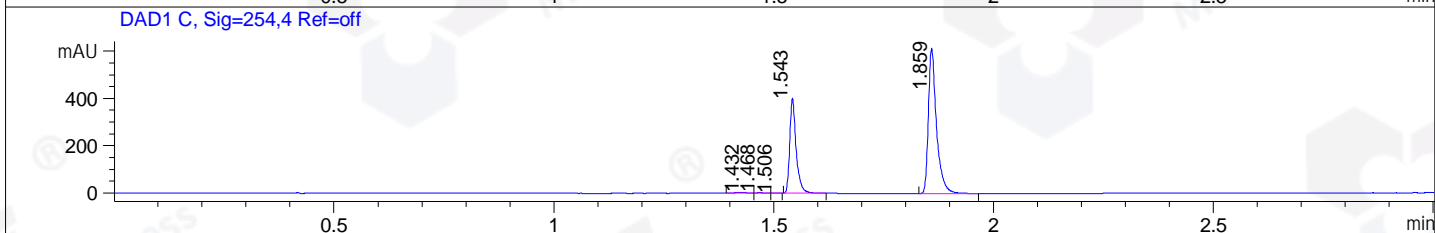
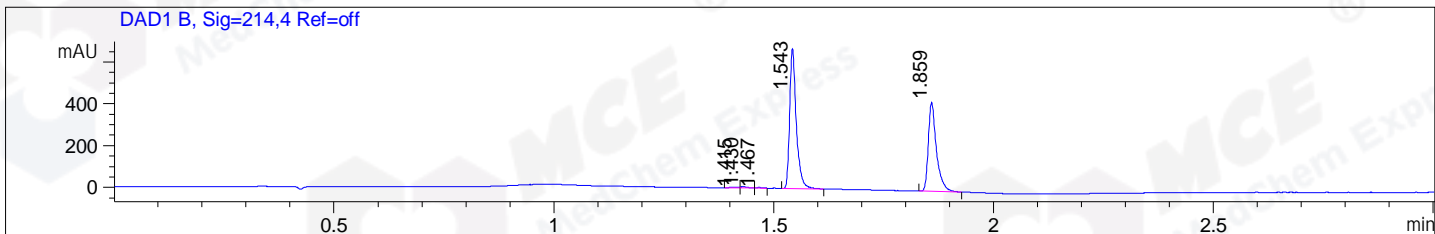


File ..1\DATA\2019\20191103\754\BIZ2019-O31-CXL1.D Tgt Mass (CHM):  
 Injection Date : 3 Nov 19 10:39 am +0800 Seq. Line : 18  
 Sample Name : BIZ2019-O31-CXL1 Location : P1-B-02  
 Acq. Operator : ZJ\_1432 Inj : 1  
 Spec. Reported : MS Integration Inj Volume : 1 ul  
 Acq. Method : D:\Chem32\1\data\2019\20191103\754\1-POS-3MIN-1(110-1500).M  
 Analysis Method : D:\CHEM32\1\DATA\2019\20191103\754\1-POS-3MIN-1(110-1500).M  
 Catalog No : HY-A0293 Batch#50223  
 Method Info : Mobile Phase: A: water(0.01%TFA) B:ACN(0.01%TFA)  
 Gradient: 5% to 95%B within 1.3 min  
 Flow Rate :1.8ml/min  
 Column :SunFire C18, 4.6\*50mm,3.5um A-RP-314  
 Oven Temperature : 45C



Integration Results for DAD1 B, Sig=214,4 Ref=off

RetTim	Width	Area	Height	Area%	MS (+)
1.42	0.02	6.11	4.56	0.48	398
1.43	0.02	6.61	5.60	0.52	414
1.47	0.02	3.52	3.73	0.28	410
1.54	0.02	706.08	670.71	55.55	382
1.86	0.02	548.76	425.39	43.17	382

Integration Results for DAD1 C, Sig=254,4 Ref=off

RetTim	Width	Area	Height	Area%	MS (+)
1.43	0.04	6.96	3.31	0.58	398
1.47	0.02	3.34	3.47	0.28	410
1.51	0.02	0.73	0.65	0.06	368
1.54	0.02	408.20	399.96	33.72	382
1.86	0.02	791.38	614.11	65.37	382

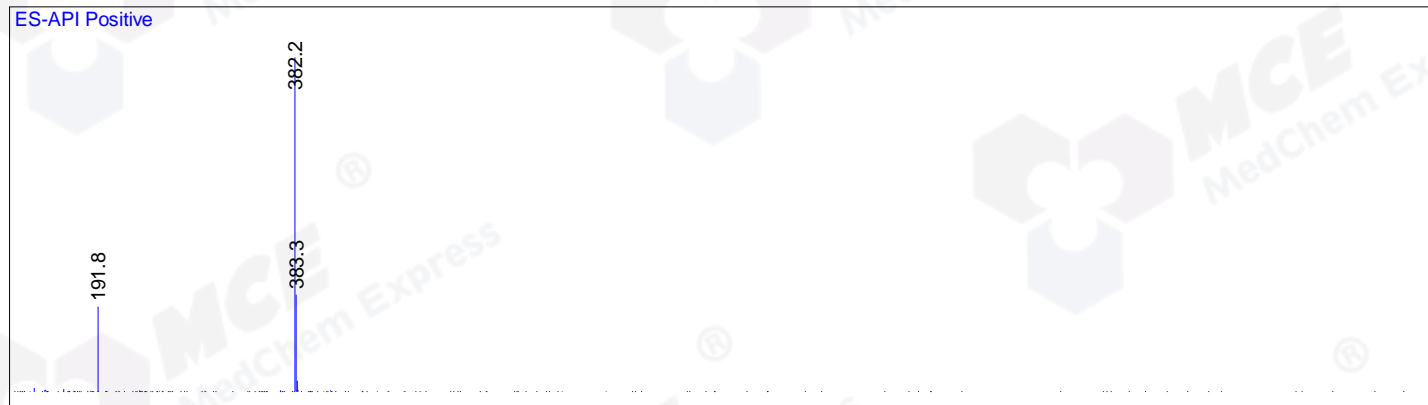
Integration Results for MSD1 TIC, MS File

RetTim	Width	Area	Height	Area%	MS (+)
--------	-------	------	--------	-------	--------

1.55	0.03	487393.75	243205.55	94.91	382
1.87	0.02	26134.94	18048.86	5.09	382

Ret. Time: 1.55

<<<< POSITIVE SPECTRA >>>>



Ret. Time: 1.87

