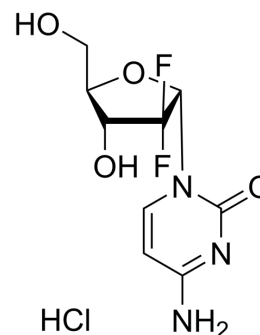


## 1'-epi Gemcitabine hydrochloride

Cat. No.:	HY-B0003A
CAS No.:	122111-05-1
Molecular Formula:	C <sub>9</sub> H <sub>12</sub> ClF <sub>2</sub> N <sub>3</sub> O <sub>4</sub>
Molecular Weight:	299.66
Target:	Others
Pathway:	Others
Storage:	-20°C, sealed storage, away from moisture * In solvent : -80°C, 6 months; -20°C, 1 month (sealed storage, away from moisture)



### BIOLOGICAL ACTIVITY

#### Description

1'-epi Gemcitabine hydrochloride is the isomer of Gemcitabine hydrochloride (HY-B0003), and can be used as an experimental control. Gemcitabine Hydrochloride (LY 188011 Hydrochloride) is a pyrimidine nucleoside analog antimetabolite and an antineoplastic agent. Gemcitabine Hydrochloride inhibits DNA synthesis and repair, resulting in autophagy and apoptosis<sup>[1][2]</sup>.

### REFERENCES

- [1]. Yip-Schneider MT, et al. Dimethylaminoparthenolide and Gemcitabine: a survival study using a genetically engineered mouse model of pancreatic cancer. BMC Cancer. 2013 Apr 17;13:194.
- [2]. Lou M, et al. Physical interaction between human ribonucleotide reductase large subunit and thioredoxin increases colorectal cancer malignancy. J Biol Chem. 2017 Jun 2;292(22):9136-9149.
- [3]. Gagnadoux F, et al. Safety of pulmonary administration of gemcitabine in rats. J Aerosol Med. 2005 Summer;18(2):198-206
- [4]. Wang H, et al. Enhanced efficacy of Gemcitabine by indole-3-carbinol in pancreatic cell lines: the role of human equilibrative nucleoside transporter 1. Anticancer Res. 2011 Oct;31(10):3171-80

**Caution: Product has not been fully validated for medical applications. For research use only.**

Tel: 609-228-6898

Fax: 609-228-5909

E-mail: tech@MedChemExpress.com

Address: 1 Deer Park Dr, Suite Q, Monmouth Junction, NJ 08852, USA