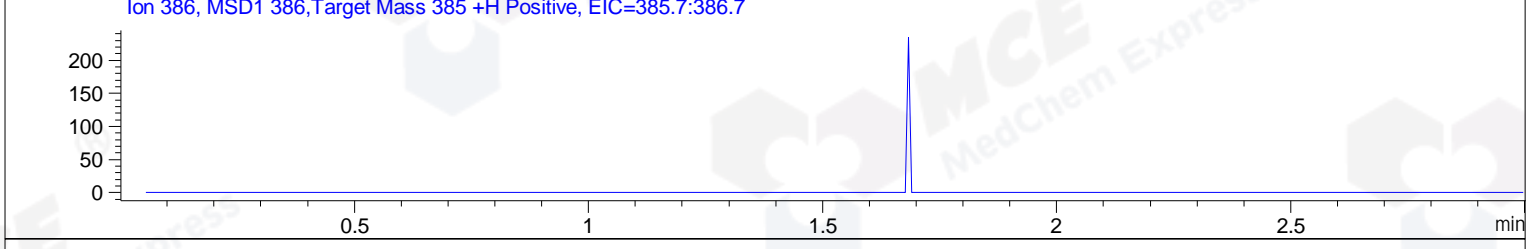
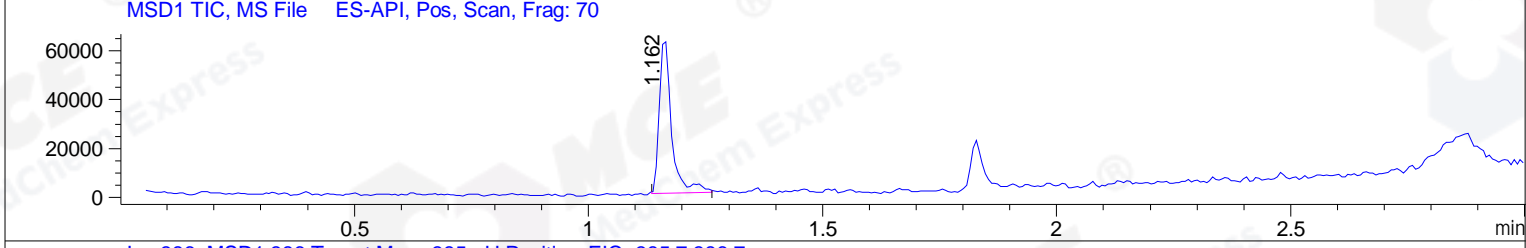
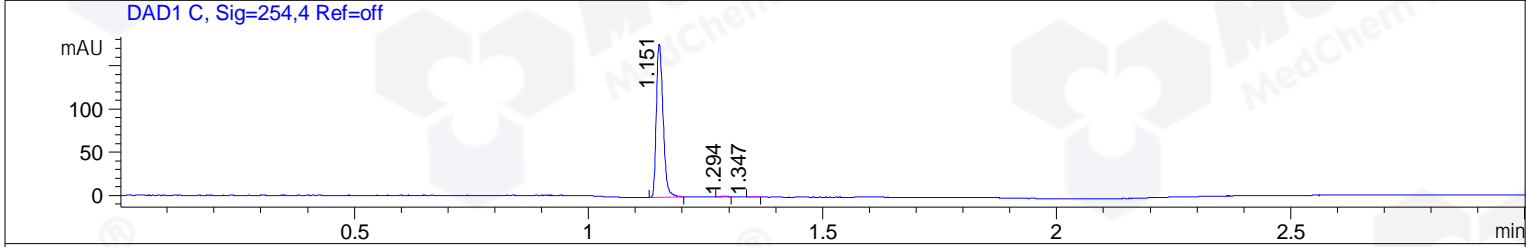
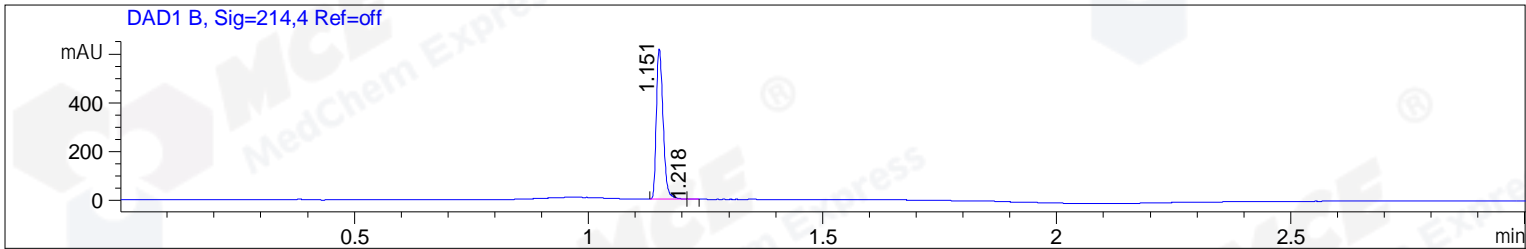


File ..DATA\2019\20191115\761\CPK2019-N14-13932-.D Tgt Mass (CHM):  
 Injection Date : 15 Nov 19 12:45 pm +0800 Seq. Line : 51  
 Sample Name : CPK2019-N14-13932 Location : P1-B-02  
 Acq. Operator : ZJ\_1432 Inj : 1  
 Spec. Reported : MS Integration Inj Volume : 0.3 ul  
 Acq. Method : D:\Chem32\1\data\2019\20191115\761\1-POS-3MIN.M  
 Analysis Method : D:\CHEM32\1\DATA\2019\20191115\761\1-POS-3MIN.M  
 Catalog No : HY-B0068 Batch# 13932  
 Method Info : Mobile Phase: A: water(0.01%TFA) B:ACN(0.01%TFA)  
 Gradient: 5% to 95%B within 1.3 min  
 Flow Rate :1.8ml/min  
 Column :SunFire C18, 4.6\*50mm,3.5um A-RP-433  
 Oven Temperature : 45



Integration Results for DAD1 B, Sig=214,4 Ref=off

RetTim	Width	Area	Height	Area%	MS (+)
1.15	0.02	620.83	616.98	99.75	350
1.22	0.02	1.53	1.48	0.25	469

Integration Results for DAD1 C, Sig=254,4 Ref=off

RetTim	Width	Area	Height	Area%	MS (+)
1.15	0.02	176.70	177.16	99.25	350
1.29	0.02	0.71	0.62	0.40	ND
1.35	0.02	0.63	0.61	0.35	ND

Integration Results for MSD1 TIC, MS File

RetTim	Width	Area	Height	Area%	MS (+)
1.16	0.03	113903.32	64206.46	100.00	350

Ret. Time: 1.16

<<<< POSITIVE SPECTRA >>>>

ES-API Positive

