

File ..\DATA\2019\20190319\558\BIZ2019-318-WYQ1.D Tgt Mass (CHM):

Injection Date : 19 Mar 19 2:55 pm +0800 Seq. Line : 70

Sample Name : BIZ2019-318-WYQ1 Location : P2-D-05

Acq. Operator : LQ_1052 Inj : 1

Spec. Reported : MS Integration Inj Volume : 2 ul

Acq. Method : D:\Chem32\1\data\2019\20190319\558\1-POS-3MIN-1.M

Analysis Method : D:\CHEM32\1\DATA\2019\20190319\558\1-POS-3MIN-1.M

Catalog No : HY-B0106A Batch#39072

Method Info : Mobile Phase: A: water(0.01%TFA) B:ACN(0.01%TFA)

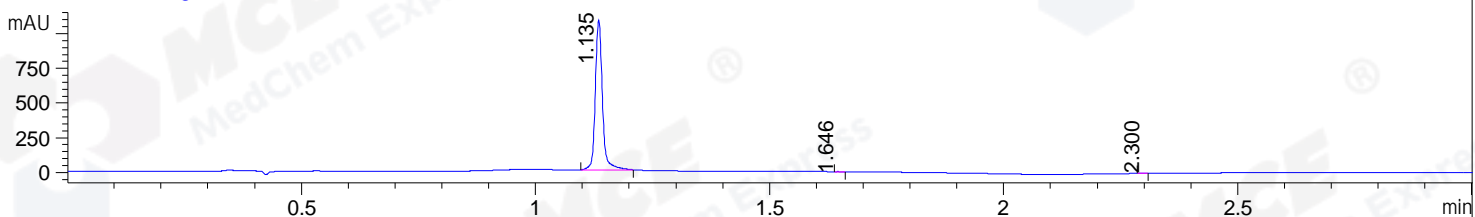
Gradient: 5% to 95%B within 1.3 min

Flow Rate :1.8ml/min

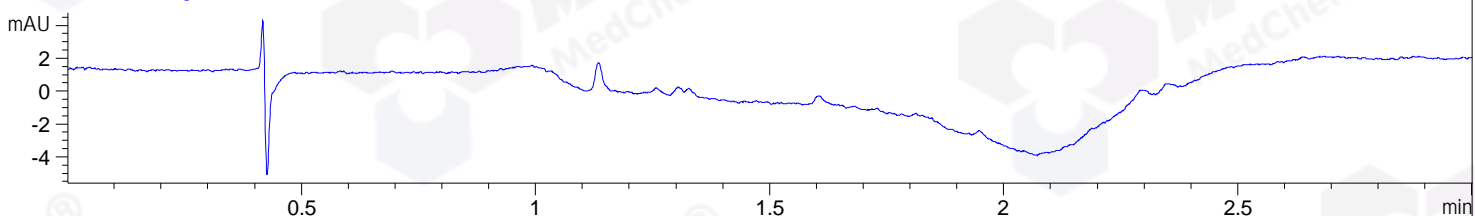
Column :SunFire C18, 4.6*50mm,3.5um A-RP-314

Oven Temperature : 45□

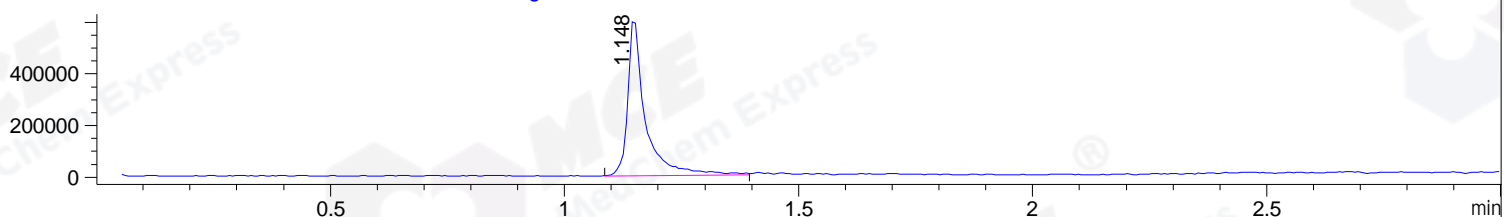
DAD1 B, Sig=214,4 Ref=off



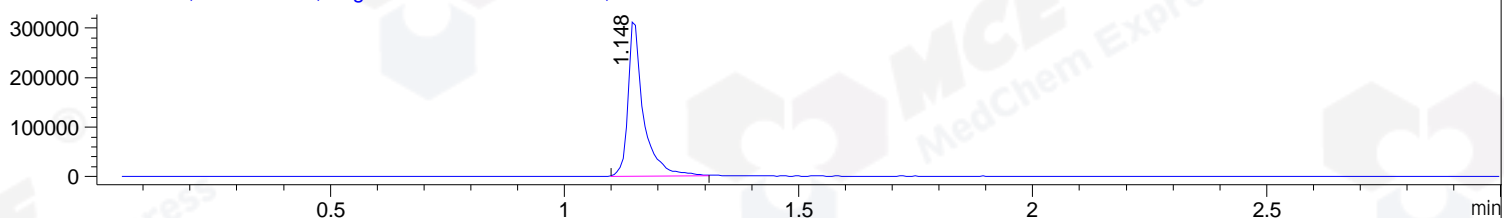
DAD1 C, Sig=254,4 Ref=off



MSD1 TIC, MS File ES-API, Pos, Scan, Frag: 70



Ion 171.1, MSD1 171.1, Target Mass 170.1 +H Positive, EIC=170.8:171.8



Integration Results for DAD1 B, Sig=214,4 Ref=off

RetTim	Width	Area	Height	Area%	MS (+)
1.14	0.02	1161.67	1083.00	99.91	171
1.65	0.01	0.55	0.67	0.05	142
2.30	0.02	0.55	0.53	0.05	142

Integration Results for DAD1 C, Sig=254,4 Ref=off

RetTim	Width	Area	Height	Area%	MS (+)
--------	-------	------	--------	-------	--------

Integration Results for MSD1 TIC, MS File

RetTim	Width	Area	Height	Area%	MS (+)
1.15	0.04	1592446.63	615268.31	100.00	171

Ret. Time: 1.15

<<<< POSITIVE SPECTRA >>>>

ES-API Positive

