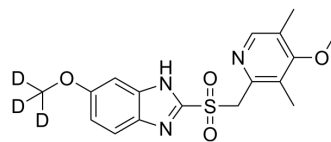


Omeprazole metabolite Omeprazole sulfone (methoxy-d₃)

Cat. No.:	HY-B0113S2		
CAS No.:	1189891-71-1		
Molecular Formula:	C ₁₇ H ₁₆ D ₃ N ₃ O ₄ S		
Molecular Weight:	364.43		
Target:	Drug Metabolite; Isotope-Labeled Compounds		
Pathway:	Metabolic Enzyme/Protease; Others		
Storage:	Powder	-20°C	3 years
	In solvent	-80°C	6 months
		-20°C	1 month



BIOLOGICAL ACTIVITY

Description

Omeprazole metabolite Omeprazole sulfone (methoxy-d₃) is the deuterium labeled Omeprazole metabolite Omeprazole sulfone. Omeprazole sulfone is a metabolite of Omeprazole, which is a proton pump inhibitor.

In Vitro

Stable heavy isotopes of hydrogen, carbon, and other elements have been incorporated into drug molecules, largely as tracers for quantitation during the drug development process. Deuteration has gained attention because of its potential to affect the pharmacokinetic and metabolic profiles of drugs^[1].
MCE has not independently confirmed the accuracy of these methods. They are for reference only.

REFERENCES

[1]. Russak EM, et al. Impact of Deuterium Substitution on the Pharmacokinetics of Pharmaceuticals. *Ann Pharmacother.* 2019;53(2):211-216.

Caution: Product has not been fully validated for medical applications. For research use only.

Tel: 609-228-6898

Fax: 609-228-5909

E-mail: tech@MedChemExpress.com

Address: 1 Deer Park Dr, Suite Q, Monmouth Junction, NJ 08852, USA