

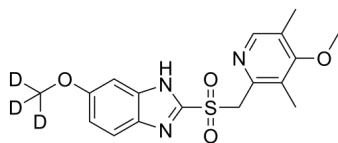
Omeprazole metabolite Omeprazole sulfone (methoxy-d3)

Cat. No.: HY-B0113S2
Batch No.: 357431
CAS No.: 1189891-71-1
Molecular Formula: C₁₇H₁₆D₃N₃O₄S

ANALYTICAL DATA

Theoretical: C(56.03%)、H(6.08%)、N(11.53%)
Result: C(56.03%)、H(5.26%)、N(11.53%)

Chemical Structure:



Caution: Product has not been fully validated for medical applications. For research use only.

Tel: 609-228-6898

Fax: 609-228-5909

E-mail: tech@MedChemExpress.com

Address: 1 Deer Park Dr, Suite Q, Monmouth Junction, NJ 08852, USA