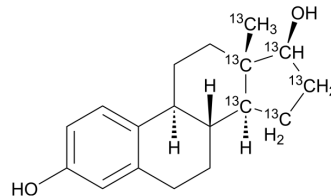


## rel-Estradiol-<sup>13</sup>C<sub>6</sub>

Cat. No.:	HY-B0141S7
Molecular Formula:	C <sub>12</sub> <sup>13</sup> C <sub>6</sub> H <sub>24</sub> O <sub>2</sub>
Molecular Weight:	278.34
Target:	Isotope-Labeled Compounds
Pathway:	Others
Storage:	Please store the product under the recommended conditions in the Certificate of Analysis.



### BIOLOGICAL ACTIVITY

#### Description

rel-Estradiol-13C6 is a isomeride of Estradiol (HY-B0141) [1].

### REFERENCES

[1]. Chernayaev GA, et al. A series of optical structural and isomeric analogs of estradiol: a comparative study of the biological activity and affinity to cytosol receptor of rabbit uterus. J Steroid Biochem. 1975 Nov-Dec;6(11-12):1483-8.

**Caution: Product has not been fully validated for medical applications. For research use only.**

Tel: 609-228-6898

Fax: 609-228-5909

E-mail: tech@MedChemExpress.com

Address: 1 Deer Park Dr, Suite Q, Monmouth Junction, NJ 08852, USA