

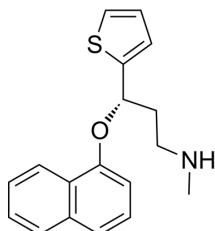
Duloxetine (hydrochloride)

Cat. No.: HY-B0161A
 CAS No.: 136434-34-9
 Batch No.: 287998
 Chemical Name: 2-Thiophenepropanamine, N-methyl-γ-(1-naphthalenyloxy)-, hydrochloride (1:1), (γS)-

PHYSICAL AND CHEMICAL PROPERTIES

Molecular Formula: $C_{18}H_{20}ClNOS$
 Molecular Weight: 333.88
 Storage: 4°C, sealed storage, away from moisture
 * In solvent : -80°C, 6 months; -20°C, 1 month (sealed storage, away from moisture)

Chemical Structure:



H-Cl

ANALYTICAL DATA

Appearance: White to off-white (Solid)
 1H NMR Spectrum: Consistent with structure
 LCMS: Consistent with structure
 Purity (HPLC): 99.96%
 Conclusion: The product has been tested and complies with the given specifications.

Caution: Product has not been fully validated for medical applications. For research use only.

Tel: 609-228-6898

Fax: 609-228-5909

E-mail: tech@MedChemExpress.com

Address: 1 Deer Park Dr, Suite Q, Monmouth Junction, NJ 08852, USA