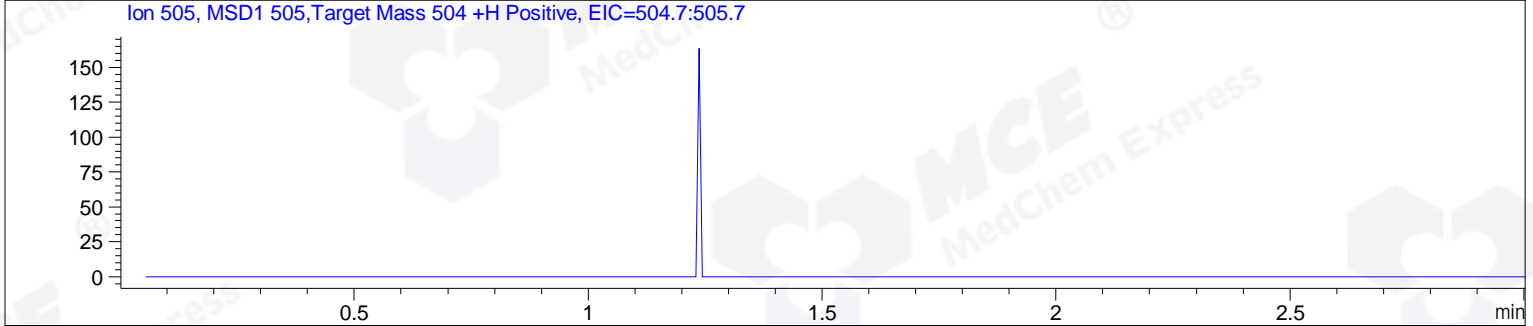
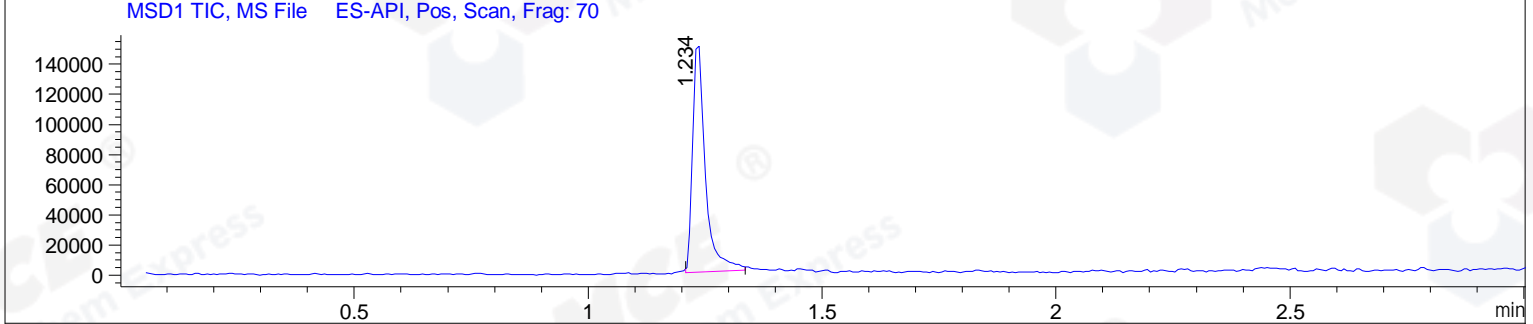
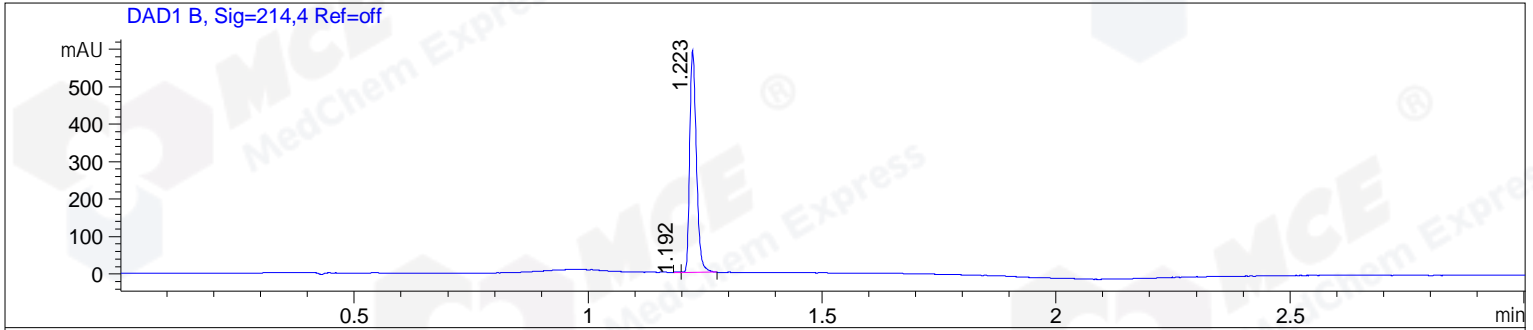


File ..DATA\2019\20191115\761\CPK2019-N14-11537-.D Tgt Mass (CHM):
 Injection Date : 15 Nov 19 11:04 am +0800 Seq. Line : 29
 Sample Name : CPK2019-N14-11537 Location : P1-A-06
 Acq. Operator : ZJ_1432 Inj : 1
 Spec. Reported : MS Integration Inj Volume : 0.5 ul
 Acq. Method : D:\Chem32\1\data\2019\20191115\761\1-POS-3MIN.M
 Analysis Method : D:\CHEM32\1\DATA\2019\20191115\761\1-POS-3MIN.M
 Catalog No : HY-B0162A Batch# 11537
 Method Info : Mobile Phase: A: water(0.01%TFA) B:ACN(0.01%TFA)
 Gradient: 5% to 95%B within 1.3 min
 Flow Rate :1.8ml/min
 Column :SunFire C18, 4.6*50mm,3.5um A-RP-433
 Oven Temperature : 45



Integration Results for DAD1 B, Sig=214,4 Ref=off

RetTim	Width	Area	Height	Area%	MS (+)
1.19	0.01	0.77	1.02	0.13	ND
1.22	0.02	588.52	592.47	99.87	469

Integration Results for MSD1 TIC, MS File

RetTim	Width	Area	Height	Area%	MS (+)
1.23	0.03	281709.53	154592.44	100.00	469

Ret. Time: 1.23

<<<< POSITIVE SPECTRA >>>>

ES-API Positive

