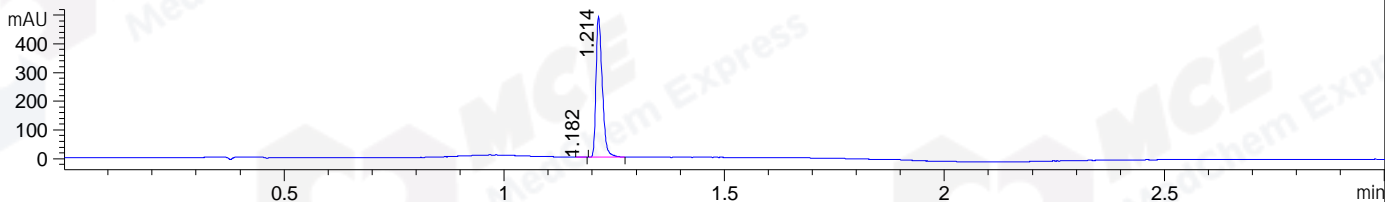
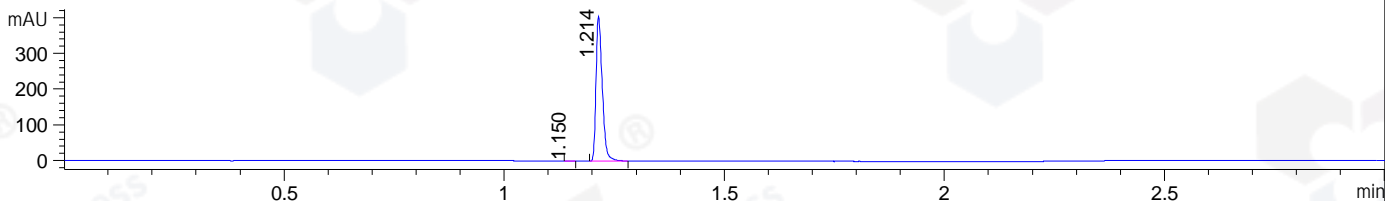


File ..DATA\2019\20191114\759\CPK2019-N12-11318-.D Tgt Mass (CHM):
Injection Date : 14 Nov 19 12:42 pm +0800 Seq. Line : 51
Sample Name : CPK2019-N12-11318 Location : P1-A-08
Acq. Operator : ZJ_1432 Inj : 1
Spec. Reported : MS Integration Inj Volume : 0.4 ul
Acq. Method : D:\Chem32\1\data\2019\20191114\759\1-POS-3MIN.M
Analysis Method : D:\CHEM32\1\DATA\2019\20191114\759\1-POS-3MIN.M
Catalog No : HY-B0180 Batch#11318
Method Info : Mobile Phase: A: water(0.01%TFA) B:ACN(0.01%TFA)
Gradient: 5% to 95%B within 1.3 min
Flow Rate :1.8ml/min
Column :SunFire C18, 4.6*50mm,3.5um A-RP-433
Oven Temperature : 45

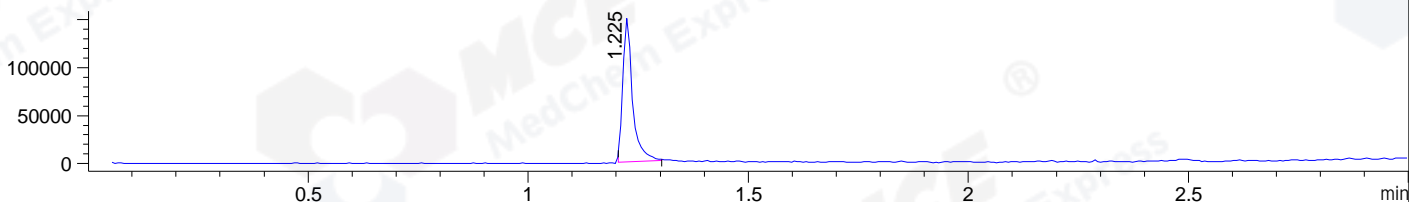
DAD1 B, Sig=214,4 Ref=off



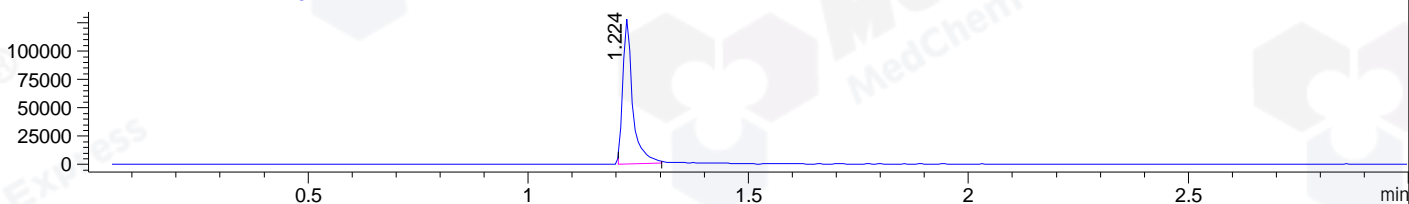
DAD1 C, Sig=254,4 Ref=off



MSD1 TIC, MS File ES-API, Pos, Scan, Frag: 70



Ion 241, MSD1 241, Target Mass 240 +H Positive, EIC=240.7:241.7



Integration Results for DAD1 B, Sig=214,4 Ref=off

RetTim	Width	Area	Height	Area%	MS (+)
1.18	0.01	0.20	0.35	0.04	ND
1.21	0.02	486.27	490.88	99.96	241

Integration Results for DAD1 C, Sig=254,4 Ref=off

RetTim	Width	Area	Height	Area%	MS (+)
1.15	0.02	0.33	0.31	0.08	ND
1.21	0.02	402.03	406.58	99.92	241

Integration Results for MSD1 TIC, MS File

RetTim	Width	Area	Height	Area%	MS (+)
1.22	0.02	230841.30	149933.53	100.00	241

Ret. Time: 1.22

<<<< POSITIVE SPECTRA >>>>

ES-API Positive



242.2

244.2