

File ..\DATA\2019\20190921\714\BIZ2019-920-WMX1-.D Tgt Mass (CHM):

Injection Date : 21 Sep 19 5:14 pm +0800 Seq. Line : 105

Sample Name : BIZ2019-920-WMX1 Location : P1-D-03

Acq. Operator : ZJ_1432 Inj : 1

Spec. Reported : MS Integration Inj Volume : 0.5 ul

Acq. Method : D:\Chem32\1\data\2019\20190921\714\1-POS-3MIN.M

Analysis Method : D:\CHEM32\1\DATA\2019\20190921\714\1-POS-3MIN.M

Catalog No : HY-B0192A Batch#45999

Method Info : Mobile Phase: A: water(0.01%TFA) B:ACN(0.01%TFA)

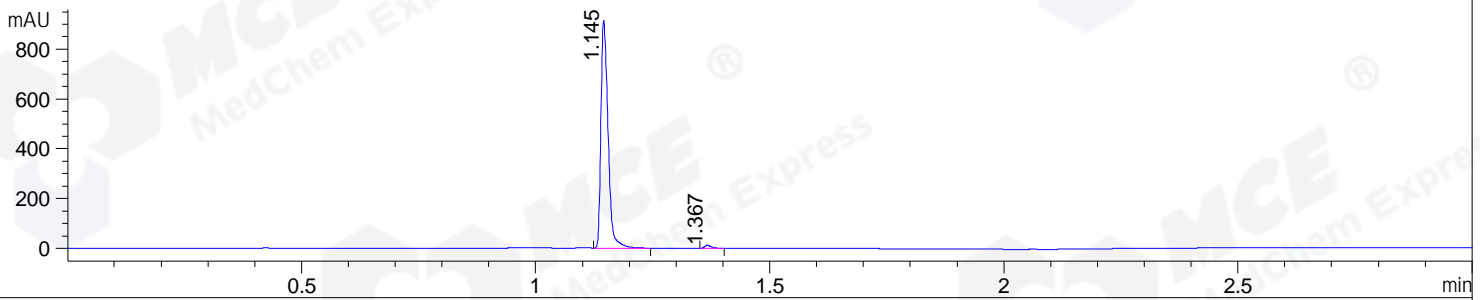
Gradient: 5% to 95%B within 1.3 min

Flow Rate :1.8ml/min

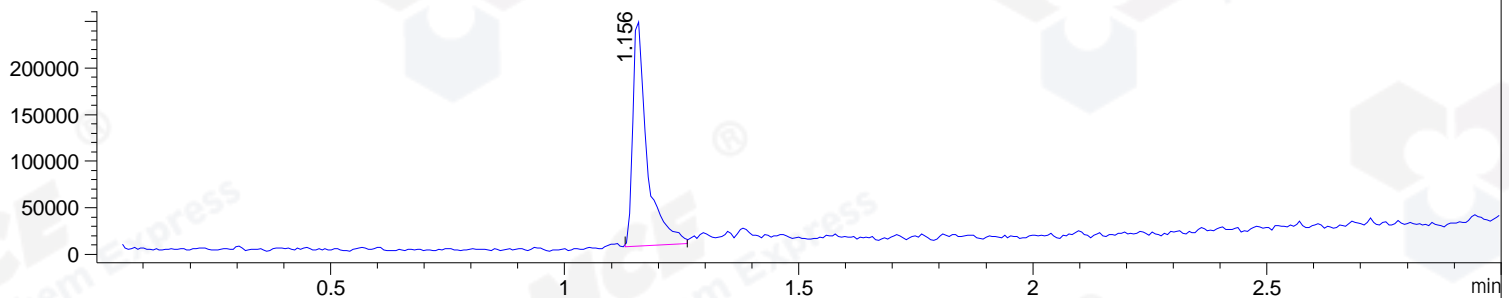
Column :SunFire C18, 4.6*50mm,3.5um A-RP-433

Oven Temperature : 45□

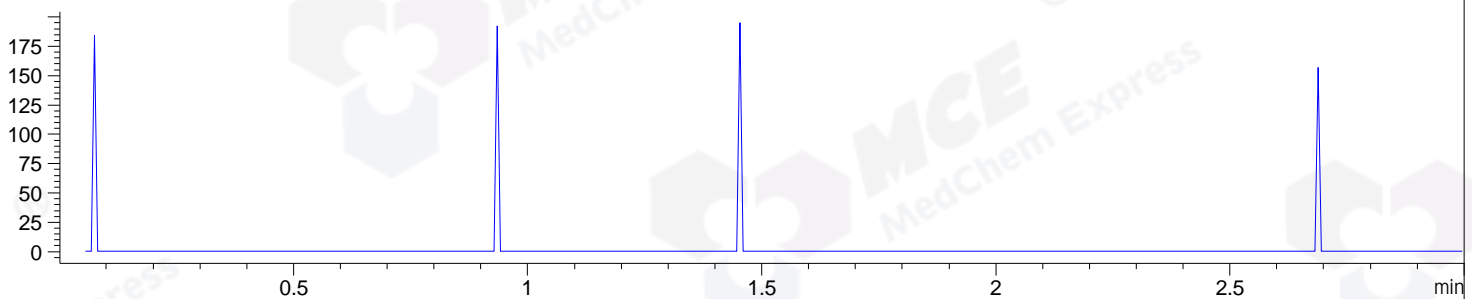
DAD1 C, Sig=254,4 Ref=off



MSD1 TIC, MS File ES-API, Pos, Scan, Frag: 70



Ion 426.18, MSD1 426.18, Target Mass 425.18 +H Positive, EIC=425.88:426.88



Integration Results for DAD1 C, Sig=254,4 Ref=off

RetTim	Width	Area	Height	Area%	MS (+)
1.15	0.02	968.53	914.75	98.73	390
1.37	0.02	12.43	12.36	1.27	390

Integration Results for MSD1 TIC, MS File

RetTim	Width	Area	Height	Area%	MS (+)
1.16	0.03	518206.78	244783.86	100.00	390

Ret. Time: 1.16

<<<< POSITIVE SPECTRA >>>>

ES-API Positive

