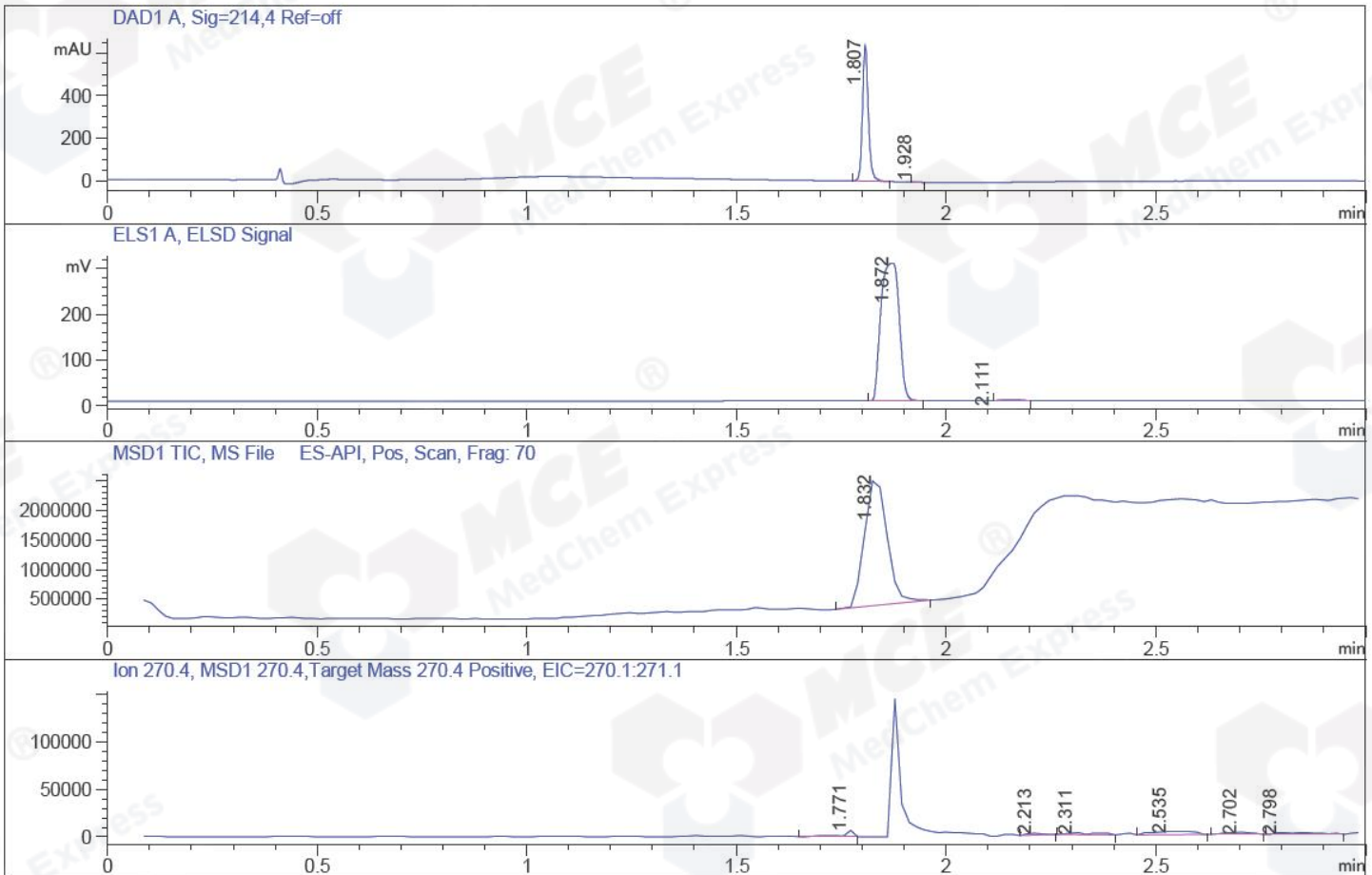


File ..ata\20170831\20170831-2\CPK2017-830-14053.D Tgt Mass (CHM):  
Injection Date : 31 Aug 17 9:26 am +0800 Seq. Line : 6  
Sample Name : CPK2017-830-14053 Location : P2-A-11  
Acq. Operator : SYSTEM Inj : 1  
Spec. Reported : MS Integration Inj Volume : 5 ul  
Acq. Method : D:\LCMS03\Data\20170831\20170831-2\1-POS-3MIN.M  
Analysis Method : D:\LCMS03\Data\20170831\20170831-2\1-POS-3MIN.M  
Catalog No : HY-B0234 Batch#14053  
Method Info : Mobile Phase: A: water(0.01%TFA) B:ACN(0.01%TFA)  
Gradient: 5% to 95%B within 1.3 min  
Flow Rate :1.8ml/min  
Column :SunFire C18, 4.6\*50mm,3.5um A-RP-186  
Oven Temperature : 45C



## Integration Results for DAD1 A, Sig=214,4 Ref=off

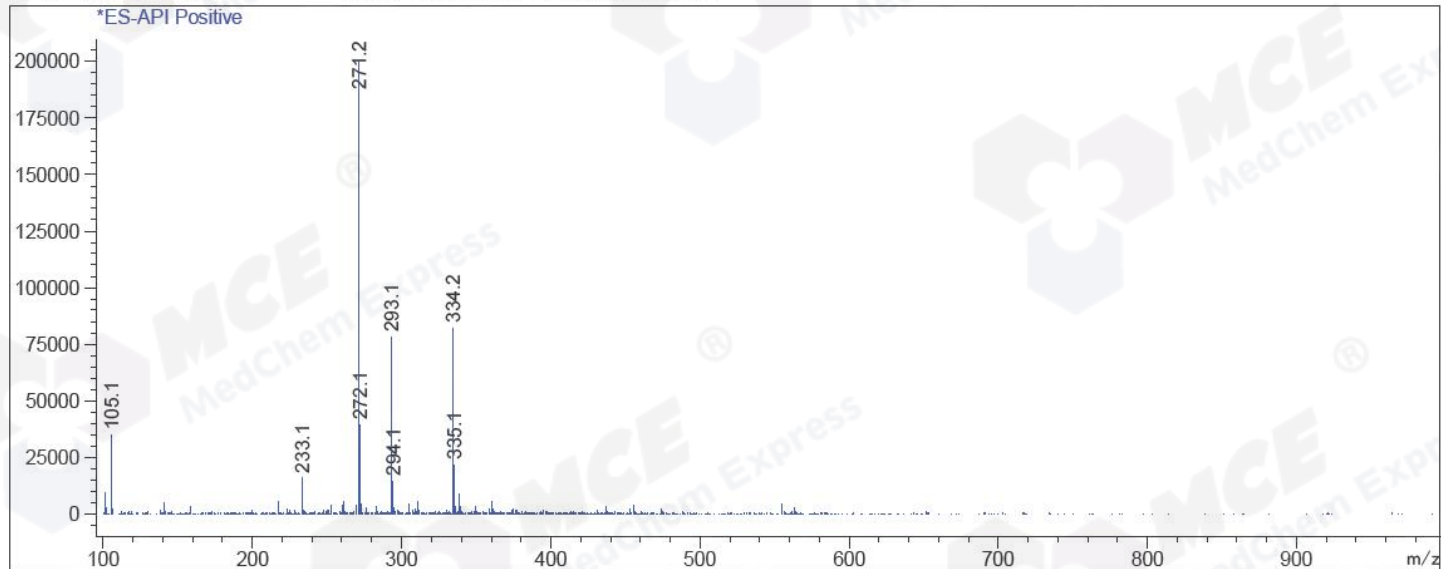
RetTim	Width	Area	Height	Area%	MS (+)
1.81	0.02	622.91	641.43	99.86	271
1.93	0.02	0.85	0.86	0.14	105

## Integration Results for MSD1 TIC, MS File

RetTim	Width	Area	Height	Area%	MS (+)
1.83	0.06	7870742.00	2172013.00	100.00	271

Ret. Time: 1.83

<<<< POSITIVE SPECTRA >>>>



\*\*\* End of Report \*\*\*