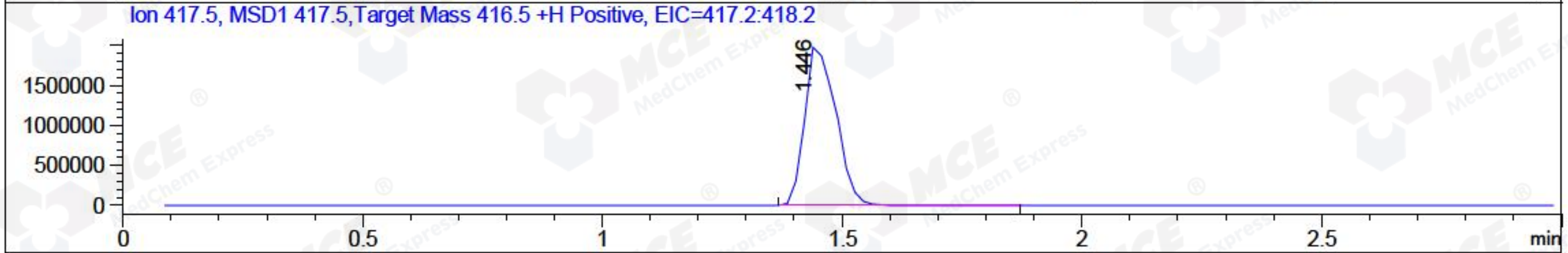
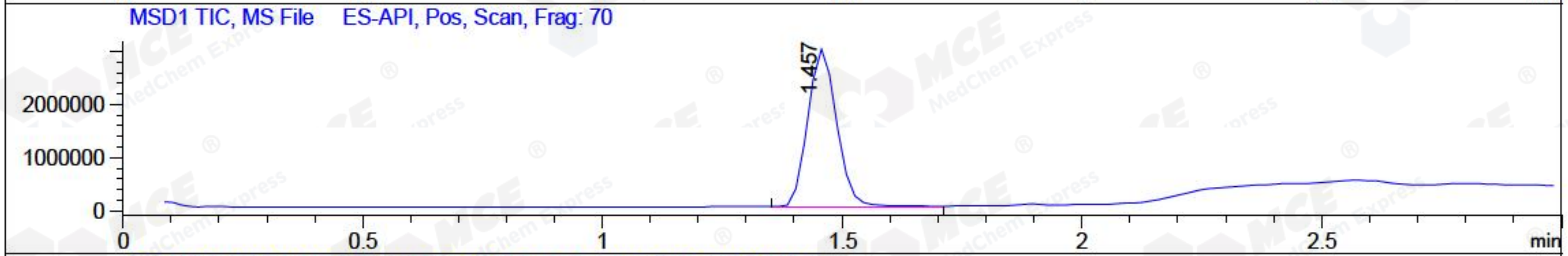
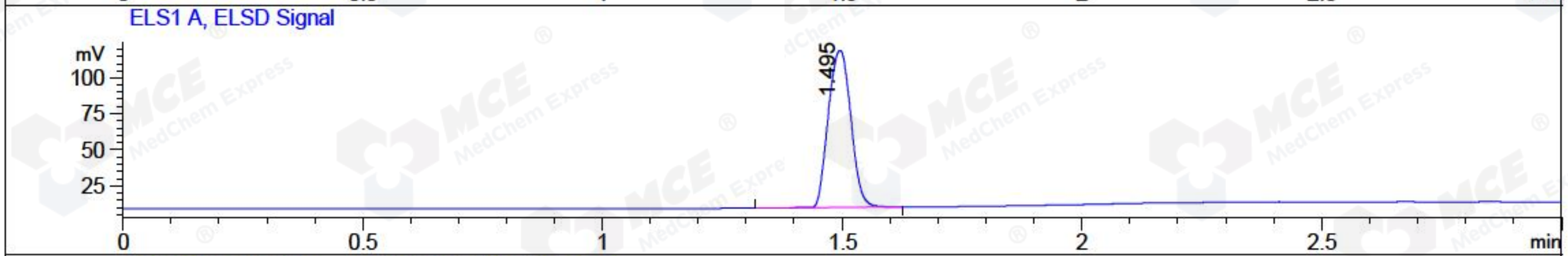
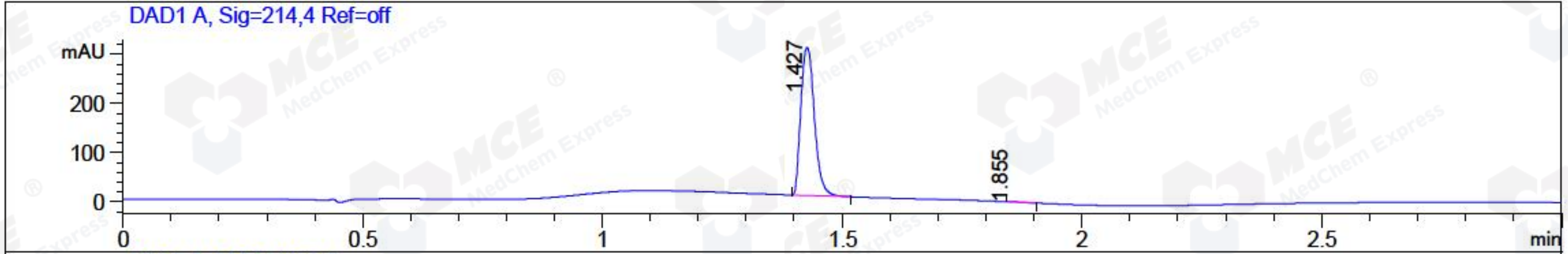


File ..\2018\20180416\20180416\CPK2018-416-16577.D Tgt Mass (CHM):
 Injection Date : 16 Apr 18 7:19 pm +0800 Seq. Line : 121
 Sample Name : CPK2018-416-16577 Location : P2-C-02
 Acq. Operator : SYSTEM Inj : 1
 Spec. Reported : MS Integration Inj Volume : 1 ul
 Acq. Method : D:\LCMS03\Data\2018\20180416\20180416\1-POS-3MIN.M
 Analysis Method : D:\LCMS03\Data\2018\20180416\20180416\1-POS-3MIN.M
 Catalog No : HY-B0279 Batch#16577
 Method Info : Mobile Phase: A: water(0.01%TFA) B:ACN(0.01%TFA)
 Gradient: 5% to 95%B within 1.3 min
 Flow Rate :1.8ml/min
 Column :SunFire C18, 4.6*50mm,3.5um A-RP-186
 Oven Temperature : 45C



Integration Results for DAD1 A, Sig=214,4 Ref=off

RetTim	Width	Area	Height	Area%	MS (+)
1.43	0.03	590.83	300.49	99.81	417
1.85	0.02	1.13	0.80	0.19	102

Integration Results for ELS1 A, ELSD Signal

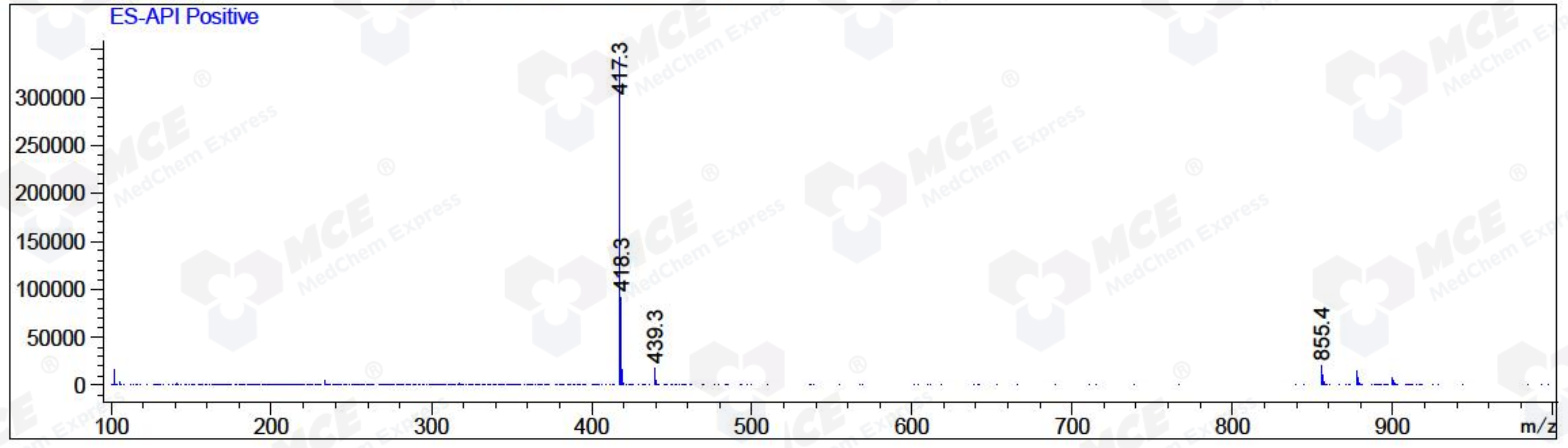
RetTim	Width	Area	Height	Area%	MS (+)
1.50	0.05	355.86	108.83	100.00	417

Integration Results for MSD1 TIC, MS File

RetTim	Width	Area	Height	Area%	MS (+)
1.46	0.06	12405342.00	2964929.50	100.00	417

Ret. Time: 1.46

<<<< POSITIVE SPECTRA >>>>



*** End of Report ***