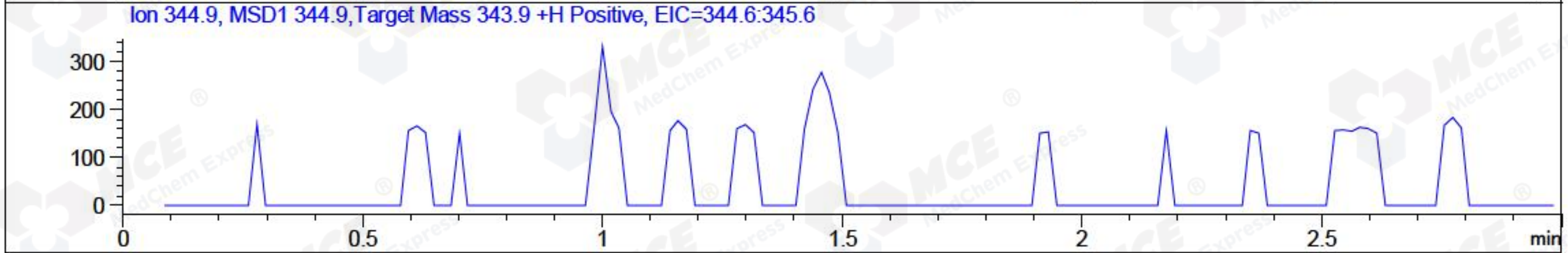
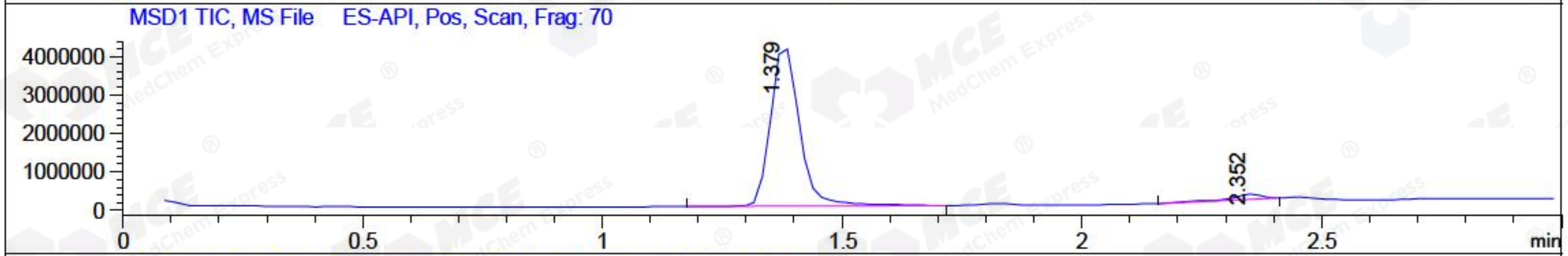
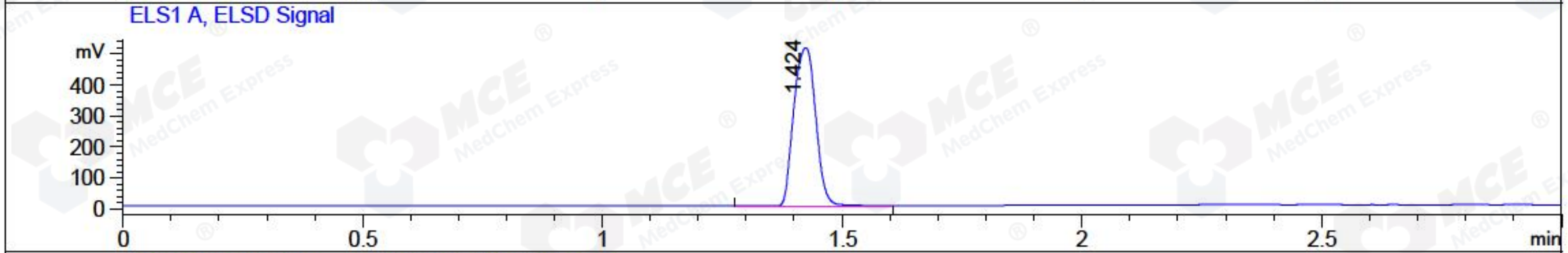
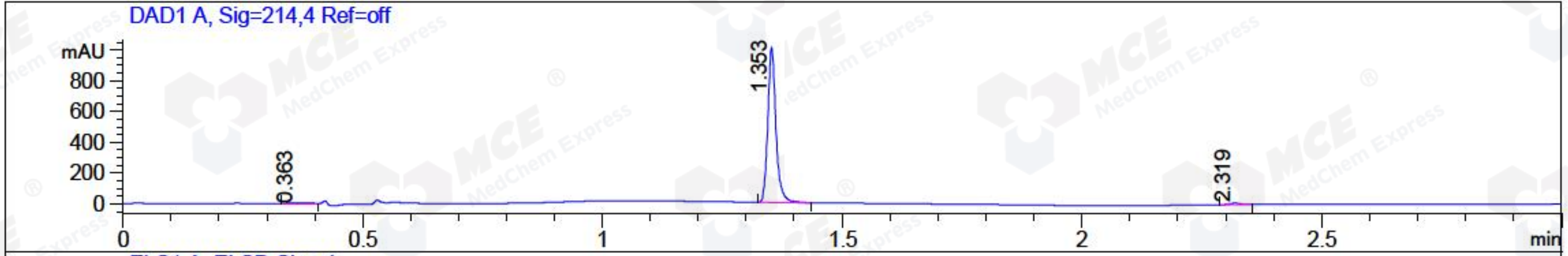


File ..\2018\20180719\20180719\CPK2018-718-18505.D Tgt Mass (CHM):  
 Injection Date : 19 Jul 18 8:53 am +0800 Seq. Line : 9  
 Sample Name : CPK2018-718-18505 Location : P2-B-03  
 Acq. Operator : SYSTEM Inj : 1  
 Spec. Reported : MS Integration Inj Volume : 3 ul  
 Acq. Method : D:\LCMS03\Data\2018\20180719\20180719\1-POS-3MIN.M  
 Analysis Method : D:\LCMS03\Data\2018\20180719\20180719\1-POS-3MIN.M  
 Catalog No : HY-B0381B Batch#18505  
 Method Info : Mobile Phase: A: water(0.01%TFA) B:ACN(0.01%TFA)  
 Gradient: 5% to 95%B within 1.3 min  
 Flow Rate : 1.8ml/min  
 Column :SunFire C18, 4.6\*50mm,3.5um A-RP-186  
 Oven Temperature : 45C



Integration Results for DAD1 A, Sig=214,4 Ref=off

RetTim	Width	Area	Height	Area%	MS (+)
0.36	0.03	8.55	4.14	0.70	577
1.35	0.02	1191.97	1007.02	98.11	308
2.32	0.02	14.39	9.77	1.18	105

Integration Results for ELS1 A, ELSD Signal

RetTim	Width	Area	Height	Area%	MS (+)
1.42	0.05	1619.12	510.52	100.00	308

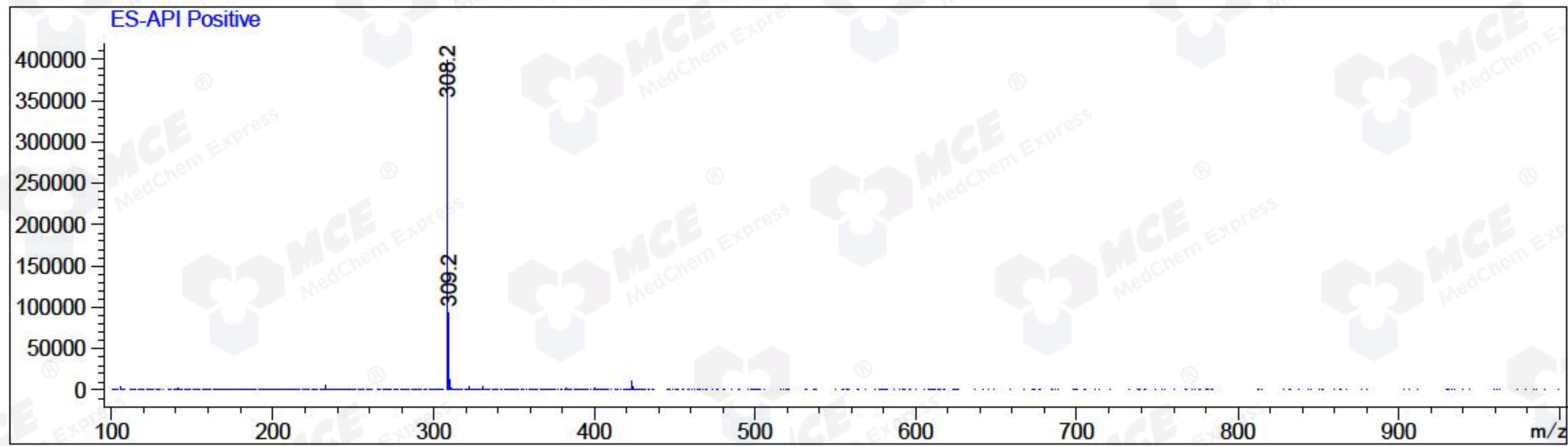
Integration Results for MSD1 TIC, MS File

RetTim	Width	Area	Height	Area%	MS (+)
1.38	0.06	17562808.00	4210563.00	96.50	308
2.35	0.07	637275.75	135158.69	3.50	105

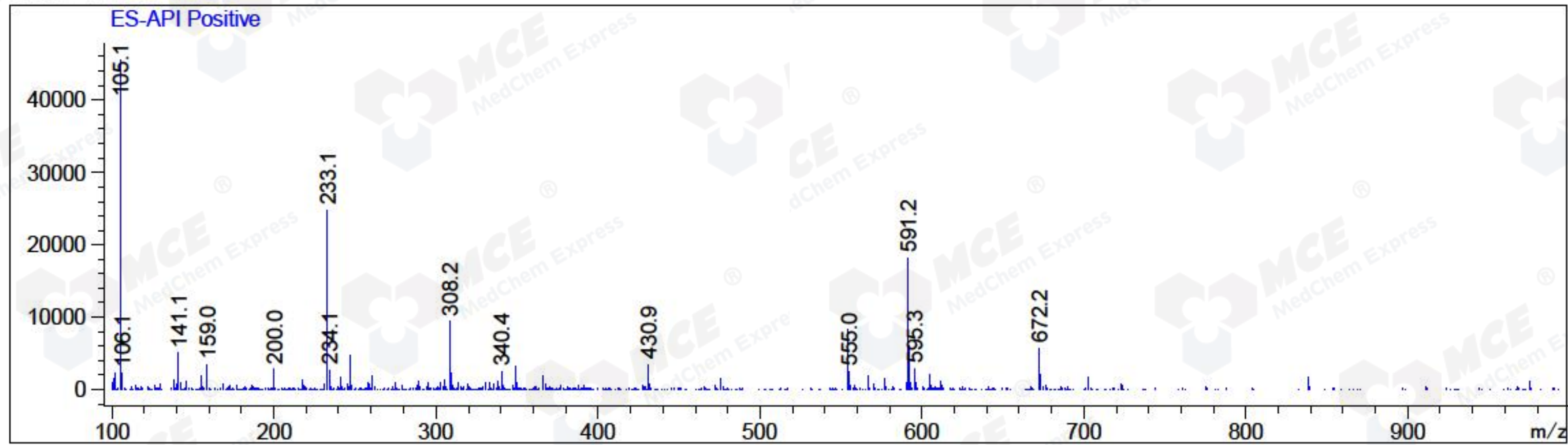


Ret. Time: 1.38

<<<< POSITIVE SPECTRA >>>>



Ret. Time: 2.35



\*\*\* End of Report \*\*\*