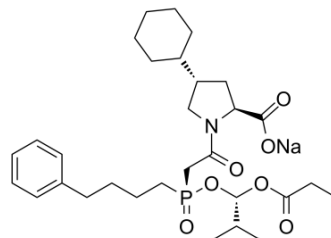


Fosinopril sodium

Cat. No.:	HY-B0382		
CAS No.:	88889-14-9		
Molecular Formula:	C ₃₀ H ₄₅ NNaO ₇ P		
Molecular Weight:	585.64		
Target:	Angiotensin-converting Enzyme (ACE)		
Pathway:	Metabolic Enzyme/Protease		
Storage:	Powder	-20°C	3 years
		4°C	2 years
	In solvent	-80°C	6 months
		-20°C	1 month



SOLVENT & SOLUBILITY

In Vitro

H₂O : 33.33 mg/mL (56.91 mM; Need ultrasonic)
 Ethanol : 16.67 mg/mL (28.46 mM; Need ultrasonic)
 DMSO : 1.43 mg/mL (2.44 mM; Need ultrasonic)

Preparing Stock Solutions	Solvent Concentration	Mass		
		1 mg	5 mg	10 mg
	1 mM	1.7075 mL	8.5377 mL	17.0753 mL
	5 mM	0.3415 mL	1.7075 mL	3.4151 mL
	10 mM	0.1708 mL	0.8538 mL	1.7075 mL

Please refer to the solubility information to select the appropriate solvent.

BIOLOGICAL ACTIVITY

Description

Fosinopril Sodium is the ester prodrug of an angiotensin-converting enzyme (ACE) inhibitor, used for the treatment of hypertension and some types of chronic heart failure. Target: ACE. Fosinopril is a phosphinic acid-containing ester prodrug that belongs to the angiotensin-converting enzyme (ACE) inhibitor class of medications. It is rapidly hydrolyzed to fosinoprilat, its principle active metabolite. Fosinoprilat inhibits ACE, the enzyme responsible for the conversion of angiotensin I (ATI) to angiotensin II (ATII). ATII regulates blood pressure and is a key component of the renin-angiotensin-aldosterone system (RAAS). Fosinopril may be used to treat mild to moderate hypertension, as an adjunct in the treatment of congestive heart failure, and to slow the rate of progression of renal disease in hypertensive individuals with diabetes mellitus and microalbuminuria or overt nephropathy [1-3].

REFERENCES

[1]. Ondetti, M.A., Structural relationships of angiotensin converting-enzyme inhibitors to pharmacologic activity. *Circulation*, 1988. 77(6 Pt 2): p. 174-8.

[2]. Piepho, R.W., Overview of the angiotensin-converting-enzyme inhibitors. Am J Health Syst Pharm, 2000. 57 Suppl 1: p. S3-7.

[3]. Sharma, S., et al., The hemodynamic effects of long-term ACE inhibition with fosinopril in patients with heart failure. Fosinopril Hemodynamics Study Group. Am J Ther, 1999. 6(4): p. 181-9.

Caution: Product has not been fully validated for medical applications. For research use only.

Tel: 609-228-6898

Fax: 609-228-5909

E-mail: tech@MedChemExpress.com

Address: 1 Deer Park Dr, Suite Q, Monmouth Junction, NJ 08852, USA