

File ..15\20171115-2\040-P2-E2-CPK2017-N15-14984.D Tgt Mass (CHM):

Injection Date : 15 Nov 17 9:34 pm +0800 Seq. Line : 40

Sample Name : CPK2017-N15-14984 Location : P2-E-02

Acq. Operator : SYSTEM Inj : 1

Spec. Reported : MS Integration Inj Volume : 1 ul

Acq. Method : D:\LCMS03\Data\20171115\20171115-2\1-POS-3MIN.M

Analysis Method : D:\LCMS03\Data\20171115\20171115-2\1-POS-3MIN.M

Catalog No : HY-B0428 Batch#14984

Method Info : Mobile Phase: A: water(0.01%TFA) B:ACN(0.01%TFA)

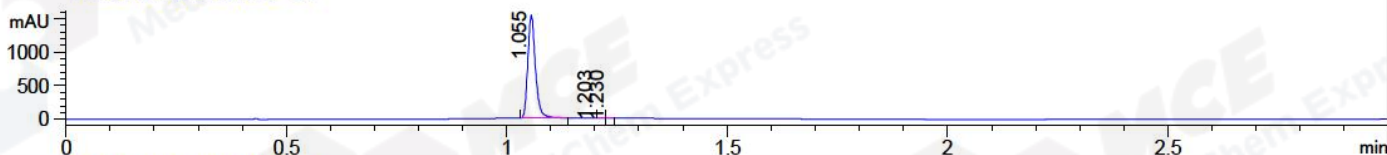
Gradient: 5% to 95%B within 1.3 min

Flow Rate :1.8ml/min

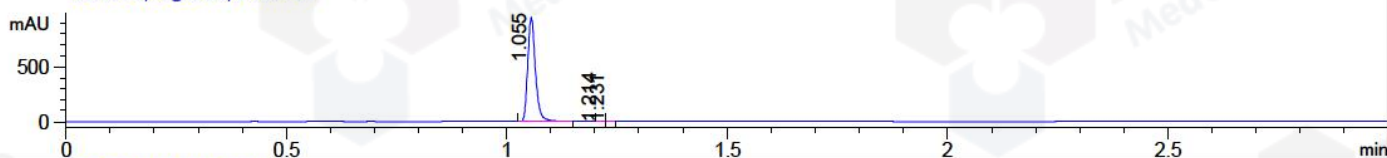
Column :SunFire C18, 4.6*50mm,3.5um A-RP-186

Oven Temperature : 45C

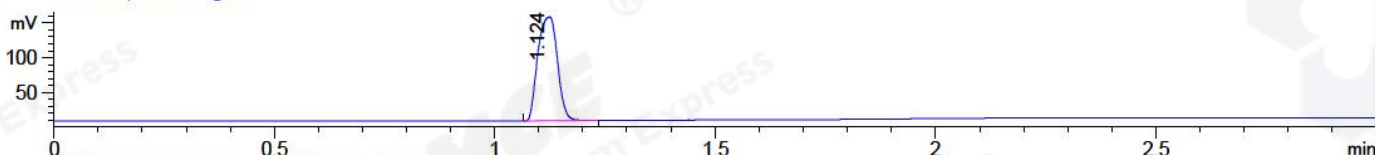
DAD1 A, Sig=214,4 Ref=off



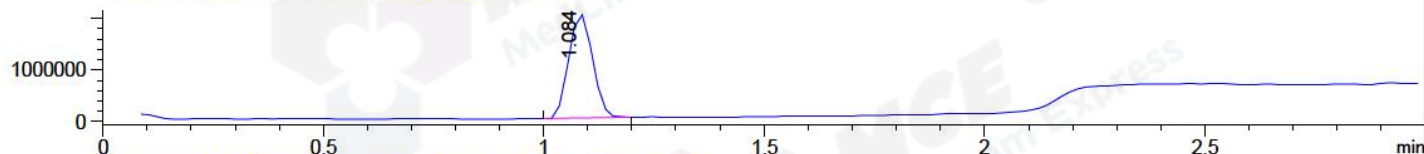
DAD1 B, Sig=254,4 Ref=off



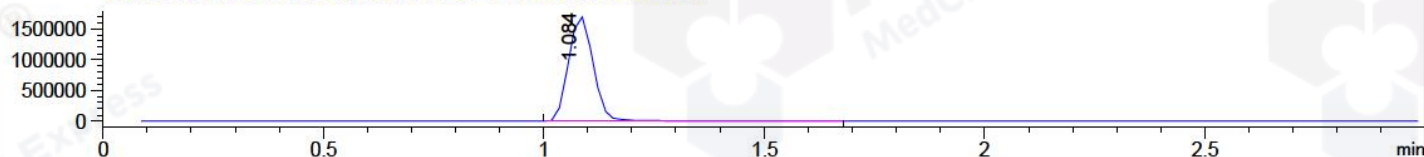
ELS1 A, ELSD Signal



MSD1 TIC, MS File ES-API, Pos, Scan, Frag: 70



Ion 229.3, MSD1 229.3, Target Mass 228.3 +H Positive, EIC=229:230



Integration Results for DAD1 A, Sig=214,4 Ref=off

RetTim	Width	Area	Height	Area%	MS (+)
1.06	0.02	1832.25	1522.28	99.92	229
1.20	0.01	0.91	0.16	0.05	229
1.23	0.01	0.62	0.78	0.03	279

Integration Results for DAD1 B, Sig=254,4 Ref=off

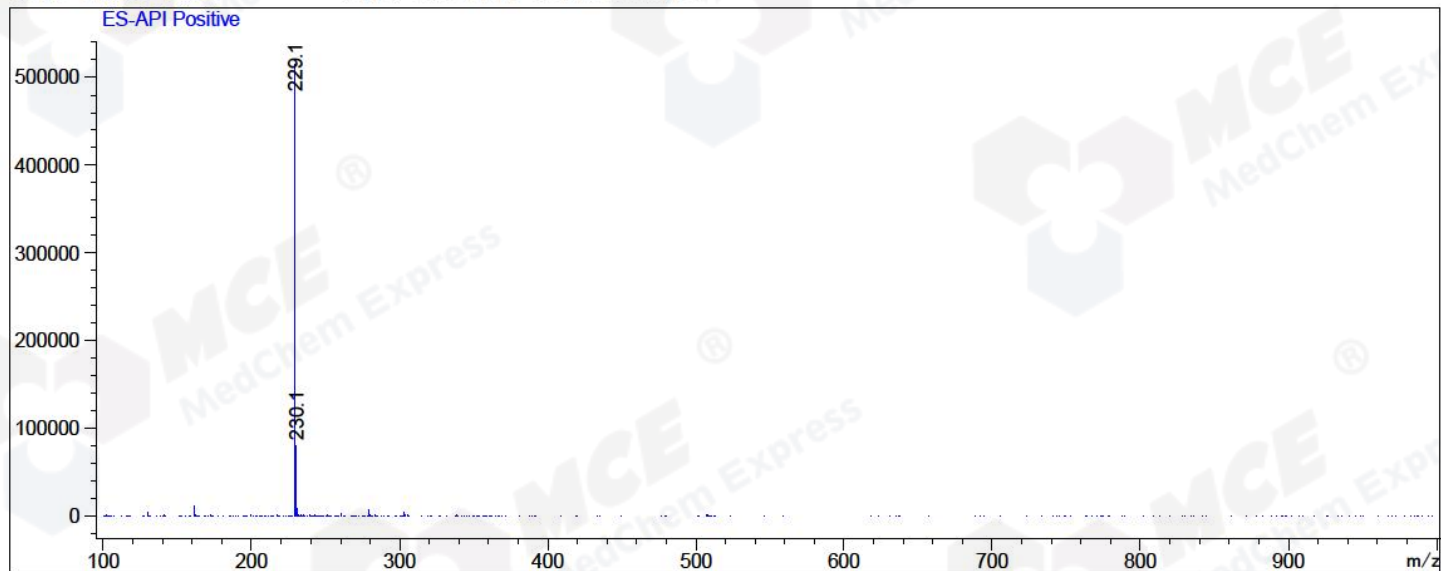
RetTim	Width	Area	Height	Area%	MS (+)
1.06	0.02	1145.83	946.26	99.96	229
1.21	0.01	0.34	0.52	0.03	229
1.23	0.01	0.17	0.26	0.01	279

Integration Results for MSD1 TIC, MS File

RetTim	Width	Area	Height	Area%	MS (+)
1.08	0.06	7591039.50	2026389.75	100.00	229

Ret. Time: 1.08

<<<< POSITIVE SPECTRA >>>>



*** End of Report ***