

File ..ata\20171213\20171213-2\CPK2017-D11-14983.D Tgt Mass (CHM):

Injection Date : 13 Dec 17 6:30 pm +0800 Seq. Line : 84

Sample Name : CPK2017-D11-14983 Location : P2-F-10

Acq. Operator : ZLJ_587 Inj : 1

Spec. Reported : MS Integration Inj Volume : 1 ul

Acq. Method : D:\LCMS03\Data\20171213\20171213-2\1-POS-3MIN.M

Analysis Method : D:\LCMS03\Data\20171213\20171213-2\1-POS-3MIN.M

Catalog No : HY-B0428A Batch#14983

Method Info : Mobile Phase: A: water(0.01%TFA) B:ACN(0.01%TFA)

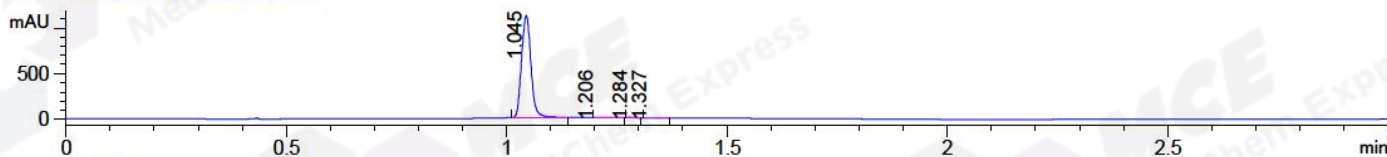
Gradient: 5% to 95%B within 1.3 min

Flow Rate :1.8ml/min

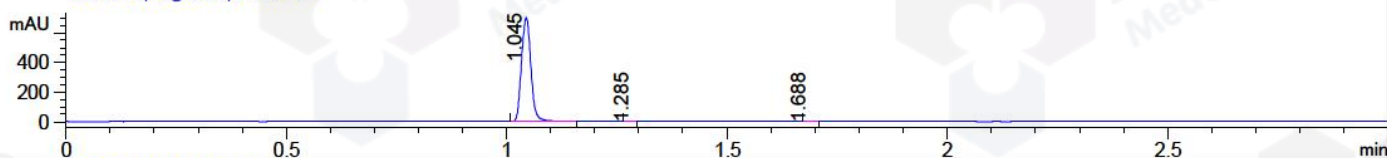
Column :SunFire C18, 4.6*50mm,3.5um A-RP-186

Oven Temperature : 45C

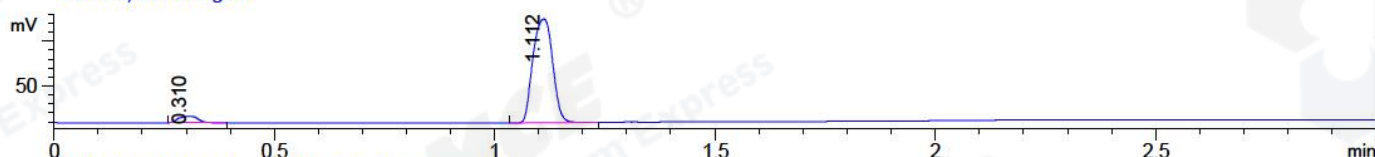
DAD1 A, Sig=214,4 Ref=off



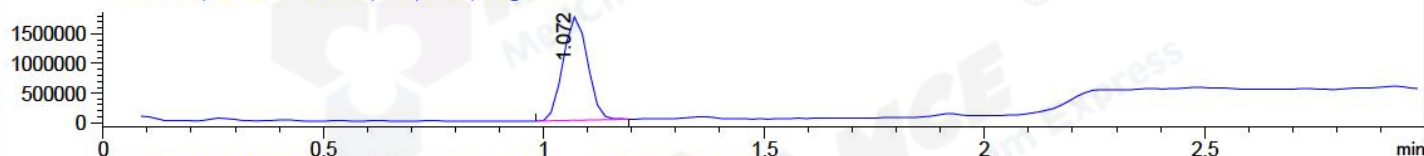
DAD1 B, Sig=254,4 Ref=off



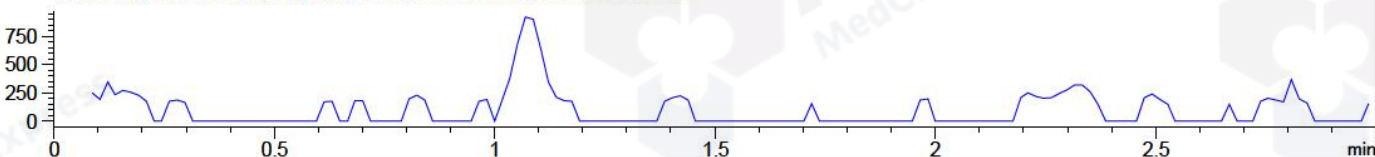
ELS1 A, ELSD Signal



MSD1 TIC, MS File ES-API, Pos, Scan, Frag: 70



Ion 251.2, MSD1 251.2, Target Mass 250.2 +H Positive, EIC=250.9:251.9



Integration Results for DAD1 A, Sig=214,4 Ref=off

RetTim	Width	Area	Height	Area%	MS (+)
1.04	0.02	1666.97	1125.78	99.80	229
1.21	0.04	1.18	0.42	0.07	229
1.28	0.02	0.74	0.77	0.04	176
1.33	0.02	1.44	0.92	0.09	176

Integration Results for DAD1 B, Sig=254,4 Ref=off

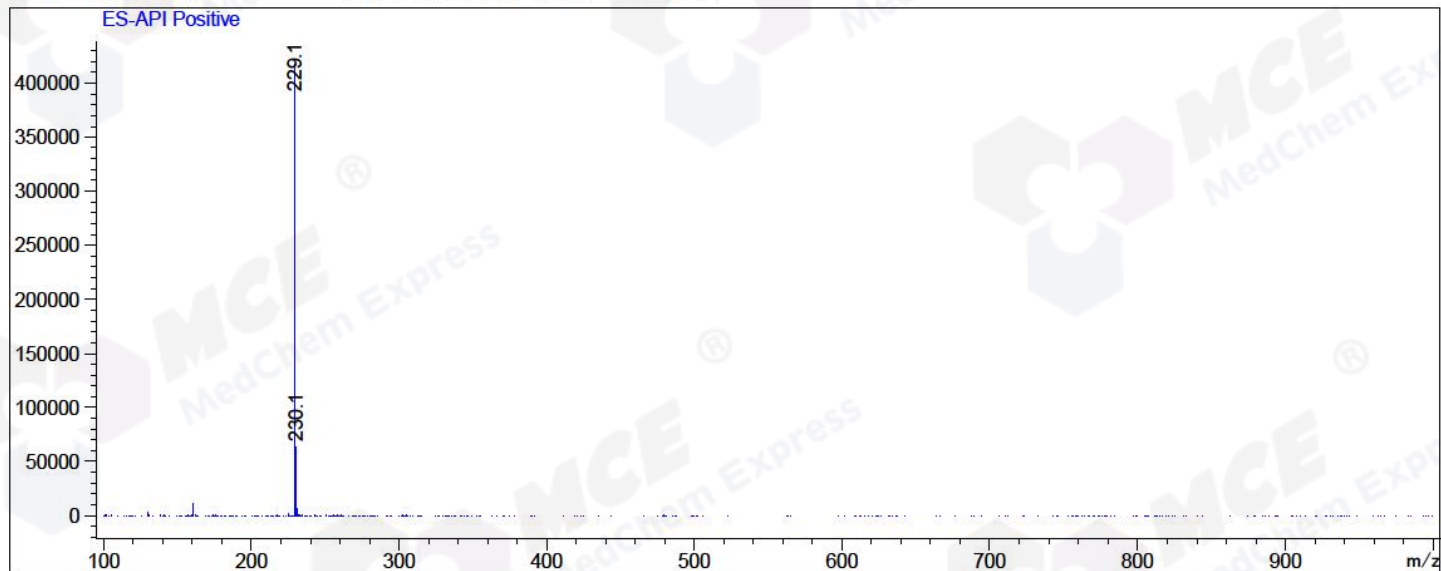
RetTim	Width	Area	Height	Area%	MS (+)
1.04	0.02	1039.24	700.96	99.91	229
1.29	0.02	0.66	0.70	0.06	176
1.69	0.02	0.24	0.22	0.02	233

Integration Results for MSD1 TIC, MS File

RetTim	Width	Area	Height	Area%	MS (+)
1.07	0.06	6648995.50	1740285.75	100.00	229

Ret. Time: 1.07

<<<< POSITIVE SPECTRA >>>>



*** End of Report ***