

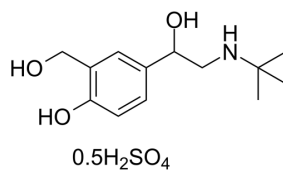
Salbutamol (hemisulfate)

Cat. No.:	HY-B0436
CAS No.:	51022-70-9
Batch No.:	16192
Chemical Name:	1,3-Benzenedimethanol, α 1-[[[(1,1-dimethylethyl)amino]methyl]-4-hydroxy-, sulfate (2:1)

PHYSICAL AND CHEMICAL PROPERTIES

Molecular Formula:	$C_{13}H_{22}NO_5S_{0.5}$												
Molecular Weight:	288.14												
Storage:	<table><tr><td>Powder</td><td>-20°C</td><td>3 years</td></tr><tr><td></td><td>4°C</td><td>2 years</td></tr><tr><td>In solvent</td><td>-80°C</td><td>6 months</td></tr><tr><td></td><td>-20°C</td><td>1 month</td></tr></table>	Powder	-20°C	3 years		4°C	2 years	In solvent	-80°C	6 months		-20°C	1 month
Powder	-20°C	3 years											
	4°C	2 years											
In solvent	-80°C	6 months											
	-20°C	1 month											

Chemical Structure:



ANALYTICAL DATA

Appearance:	White to off-white (Solid)
¹ H NMR Spectrum:	Consistent with structure
Purity (NMR):	≥98.0%
Conclusion:	The product has been tested and complies with the given specifications.

Caution: Product has not been fully validated for medical applications. For research use only.

Tel: 609-228-6898

Fax: 609-228-5909

E-mail: tech@MedChemExpress.com

Address: 1 Deer Park Dr, Suite Q, Monmouth Junction, NJ 08852, USA