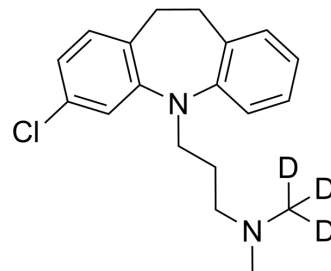


## Clomipramine-d3

Cat. No.:	HY-B0457AS
CAS No.:	136765-29-2
Molecular Formula:	C <sub>19</sub> H <sub>20</sub> D <sub>3</sub> ClN <sub>2</sub>
Molecular Weight:	317.87
Target:	Serotonin Transporter; Dopamine Receptor
Pathway:	Neuronal Signaling; GPCR/G Protein
Storage:	Please store the product under the recommended conditions in the Certificate of Analysis.



### BIOLOGICAL ACTIVITY

#### Description

Clomipramine-d3 (Chlorimipramine-d3) is the deuterium labeled Clomipramine. Clomipramine is a serotonin transporter (SERT), norepinephrine transporter (NET) dopamine transporter (DAT) blocker with K<sub>i</sub> of 0.14, 54 and 3 nM, respectively<sup>[1][2]</sup>.

### REFERENCES

- [1]. McTavish, D. and P. Benfield, Clomipramine. An overview of its pharmacological properties and a review of its therapeutic use in obsessive compulsive disorder and panic disorder. *Drugs*, 1990. 39(1): p. 136-53.
- [2]. Owens, M.J., et al., Neurotransmitter receptor and transporter binding profile of antidepressants and their metabolites. *J Pharmacol Exp Ther*, 1997. 283(3): p. 1305-22.

**Caution: Product has not been fully validated for medical applications. For research use only.**

Tel: 609-228-6898

Fax: 609-228-5909

E-mail: tech@MedChemExpress.com

Address: 1 Deer Park Dr, Suite Q, Monmouth Junction, NJ 08852, USA