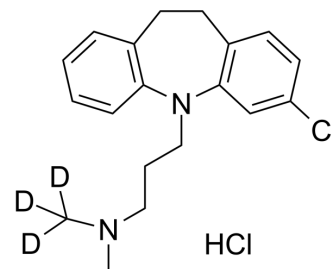


Clomipramine-d₃ hydrochloride

Cat. No.:	HY-B0457S
CAS No.:	1398065-86-5
Molecular Formula:	C ₁₉ H ₂₁ D ₃ Cl ₂ N ₂
Molecular Weight:	354.33
Target:	Serotonin Transporter; Dopamine Receptor
Pathway:	Neuronal Signaling; GPCR/G Protein
Storage:	-20°C, sealed storage, away from moisture * In solvent : -80°C, 6 months; -20°C, 1 month (sealed storage, away from moisture)



SOLVENT & SOLUBILITY

In Vitro	DMSO : 125 mg/mL (352.78 mM; Need ultrasonic)					
	Preparing Stock Solutions	Solvent	Mass	1 mg	5 mg	10 mg
		Concentration				
		1 mM		2.8222 mL	14.1111 mL	28.2223 mL
		5 mM		0.5644 mL	2.8222 mL	5.6445 mL
10 mM		0.2822 mL	1.4111 mL	2.8222 mL		
Please refer to the solubility information to select the appropriate solvent.						
In Vivo	<ol style="list-style-type: none"> Add each solvent one by one: 10% DMSO >> 40% PEG300 >> 5% Tween-80 >> 45% saline Solubility: ≥ 2.08 mg/mL (5.87 mM); Clear solution Add each solvent one by one: 10% DMSO >> 90% (20% SBE-β-CD in saline) Solubility: ≥ 2.08 mg/mL (5.87 mM); Clear solution Add each solvent one by one: 10% DMSO >> 90% corn oil Solubility: ≥ 2.08 mg/mL (5.87 mM); Clear solution 					

BIOLOGICAL ACTIVITY

Description	Clomipramine-d ₃ (hydrochloride) is a deuterium labeled Clomipramine hydrochloride. Clomipramine hydrochloride is a serotonin transporter (SERT), norepinephrine transporter (NET) dopamine transporter (DAT) blocker with K _i of 0.14, 54 and 3 nM, respectively[1][2].
--------------------	--

REFERENCES

[1]. Owens, M.J., et al., Neurotransmitter receptor and transporter binding profile of antidepressants and their metabolites. J Pharmacol Exp Ther, 1997. 283(3): p. 1305-22.

[2]. McTavish, D. and P. Benfield, Clomipramine. An overview of its pharmacological properties and a review of its therapeutic use in obsessive compulsive disorder and panic disorder. *Drugs*, 1990. 39(1): p. 136-53.

Caution: Product has not been fully validated for medical applications. For research use only.

Tel: 609-228-6898

Fax: 609-228-5909

E-mail: tech@MedChemExpress.com

Address: 1 Deer Park Dr, Suite Q, Monmouth Junction, NJ 08852, USA