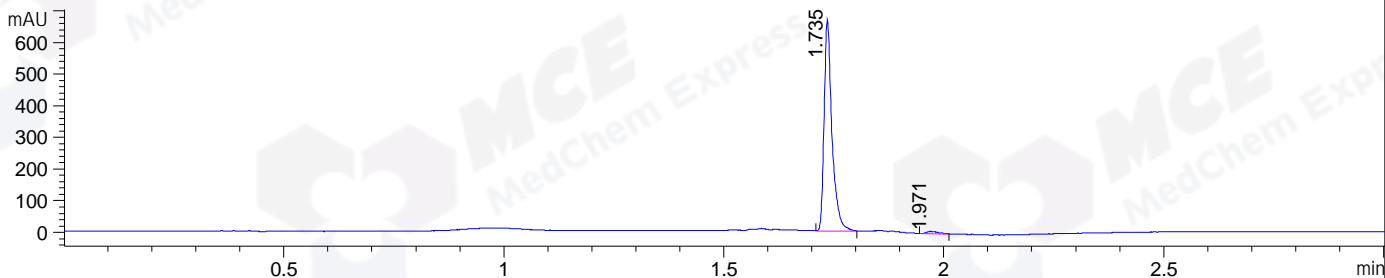
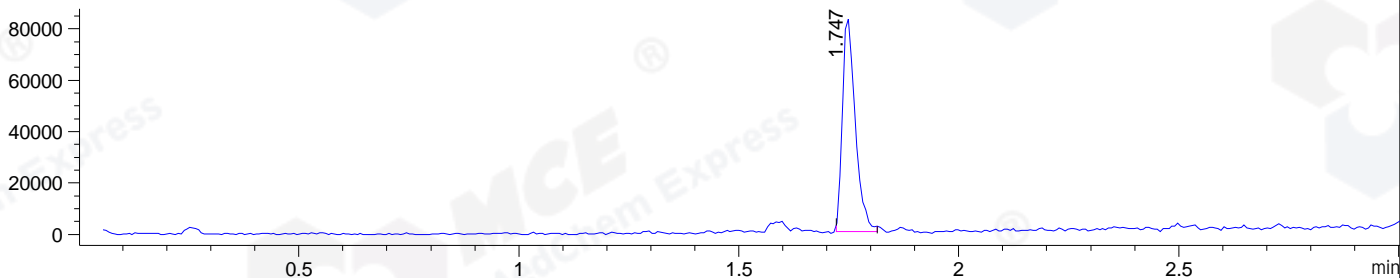


File ..DATA\2019\20191128\778\CPK2019-N27-13417-.D Tgt Mass (CHM):  
Injection Date : 28 Nov 19 2:11 pm +0800 Seq. Line : 62  
Sample Name : CPK2019-N27-13417 Location : P1-A-07  
Acq. Operator : ZJ\_1432 Inj : 1  
Spec. Reported : MS Integration Inj Volume : 0.5 ul  
Acq. Method : D:\Chem32\1\data\2019\20191128\778\1-POS-3MIN.M  
Analysis Method : D:\CHEM32\1\DATA\2019\20191128\778\1-POS-3MIN.M  
Catalog No : HY-B0466 Batch# 13417  
Method Info : Mobile Phase: A: water(0.01%TFA) B:ACN(0.01%TFA)  
Gradient: 5% to 95%B within 1.3 min  
Flow Rate :1.8ml/min  
Column :SunFire C18, 4.6\*50mm,3.5um A-RP-433  
Oven Temperature : 45

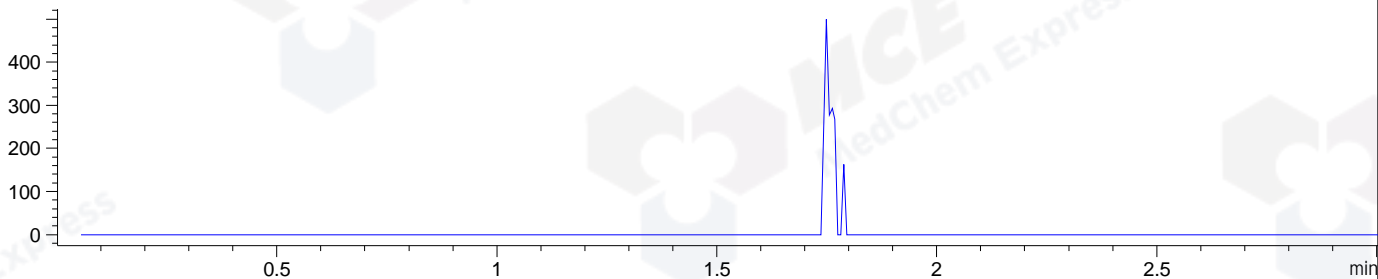
DAD1 B, Sig=214,4 Ref=off



MSD1 TIC, MS File ES-API, Pos, Scan, Frag: 70



Ion 476, MSD1 476, Target Mass 475 +H Positive, EIC=475.7:476.7



Integration Results for DAD1 B, Sig=214,4 Ref=off

RetTim	Width	Area	Height	Area%	MS (+)
1.74	0.02	832.87	667.67	98.57	436
1.97	0.02	12.12	6.91	1.43	ND

Integration Results for MSD1 TIC, MS File

RetTim	Width	Area	Height	Area%	MS (+)
1.75	0.03	171332.08	83514.82	100.00	436

Ret. Time: 1.75

<<<< POSITIVE SPECTRA >>>>

ES-API Positive

