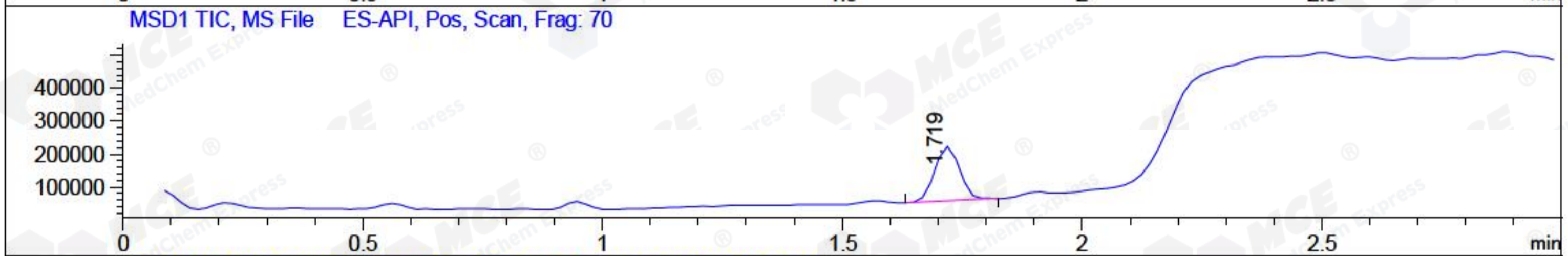
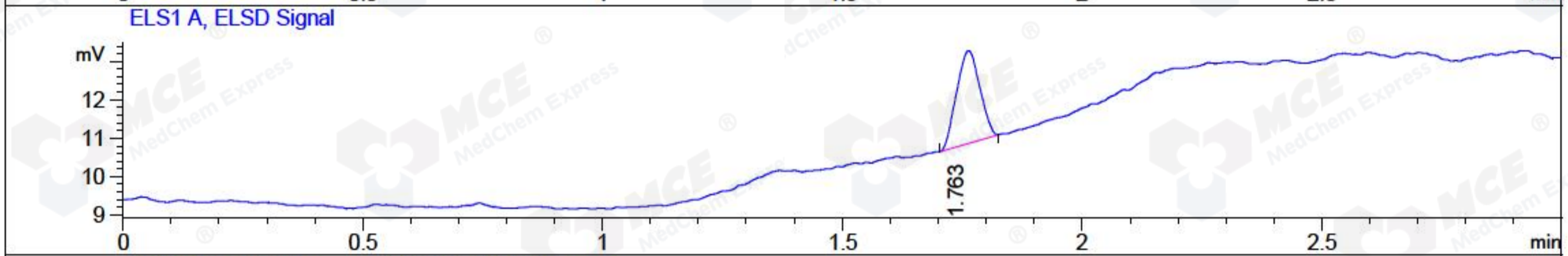
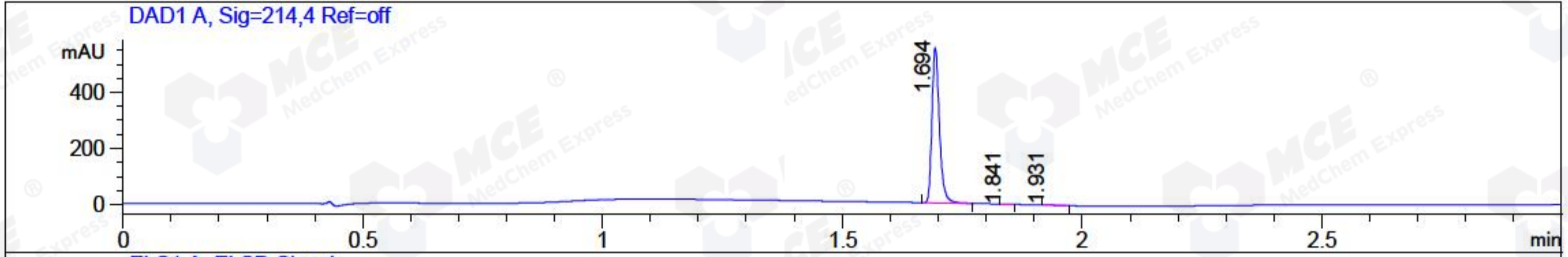


File ..\Data\20180119\20180119\CPK2018-119-16707.D Tgt Mass (CHM):
 Injection Date : 19 Jan 18 6:25 pm +0800 Seq. Line : 117
 Sample Name : CPK2018-119-16707 Location : P2-C-04
 Acq. Operator : SYSTEM Inj : 1
 Spec. Reported : MS Integration Inj Volume : 1 ul
 Acq. Method : D:\LCMS03\Data\20180119\20180119\1-POS-3MIN.M
 Analysis Method : D:\LCMS03\Data\20180119\20180119\1-POS-3MIN.M
 Catalog No : HY-B0531 Batch#16707
 Method Info : Mobile Phase: A: water(0.01%TFA) B:ACN(0.01%TFA)
 Gradient: 5% to 95%B within 1.3 min
 Flow Rate :1.8ml/min
 Column :SunFire C18, 4.6*50mm,3.5um A-RP-186
 Oven Temperature : 45C



Integration Results for DAD1 A, Sig=214,4 Ref=off

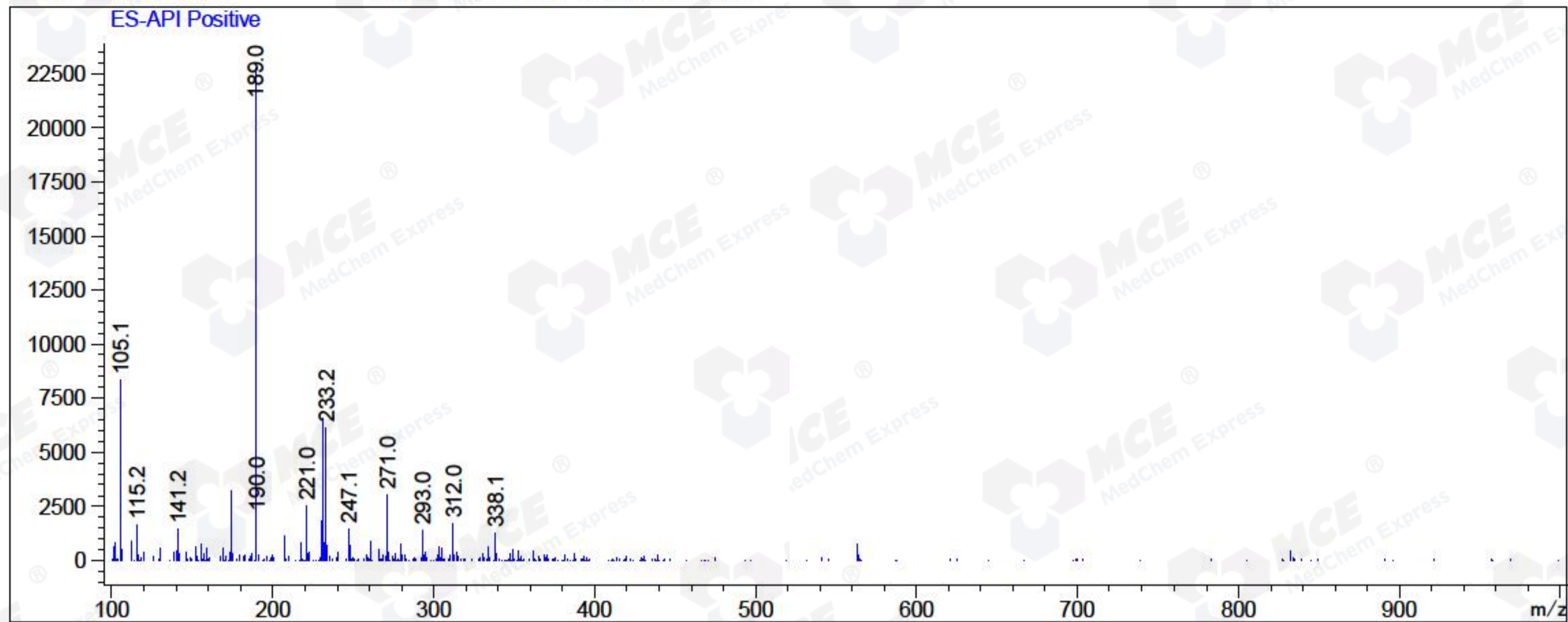
RetTim	Width	Area	Height	Area%	MS (+)
1.69	0.02	601.30	554.95	99.66	189
1.84	0.02	0.96	1.04	0.16	105
1.93	0.02	1.08	0.88	0.18	105

Integration Results for MSD1 TIC, MS File

RetTim	Width	Area	Height	Area%	MS (+)
1.72	0.06	595197.13	165302.13	100.00	189

Ret. Time: 1.72

<<<< POSITIVE SPECTRA >>>>



*** End of Report ***